



# Providence Square

London, SE1

£2,000 per month  
(£461.54 per week)

\*Video Viewing Available\* A bright and well-presented modern apartment on the 2nd floor of this secure portered development. The property benefits from having a balcony with river views, double bedroom, 2nd bedroom/study.



# Providence Square

London, SE1

- Bright apartment with river views
- 2 bedroom apartment with balcony
- Parking
- Porter
- Lift
- Available furnished



A bright and well-presented modern apartment on the 2nd floor of this secure portered development. The property benefits from having a balcony with river views, double bedroom, 2nd bedroom/study, kitchen and bathroom as well as parking.

Shad Thames is a unique area steeped in history and character situated along the south side of the River Thames. The area is home to London's most iconic landmark, Tower Bridge and is within the vicinity of many attractions such as The Shard, Tate Modern and Tower of London. Shad Thames boasts a variety of bars and restaurants and is a short walk to the delights of Bermondsey Street, Maltby Street & Borough markets. Although The City is within walking distance, the area is well connected with excellent transport links via London Bridge & Tower Hill stations as well as the river taxi.

**Minimum Term:** 12 months  
**Deposit Required:** £0.00  
**Local Authority:** London Borough of Southwark (Council Tax)  
**Council Tax Band:** F  
**EPC Rating:** C  
**Furnished**

Energy Efficiency Rating		Current	Potential
Very energy efficient - lower running costs			
(92-100)	A		
(81-91)	B	81	86
(69-80)	C		
(55-68)	D		
(39-54)	E		
(21-38)	F		
(1-20)	G		
Not energy efficient - higher running costs			
England, Scotland & Wales		EU Directive 2002/91/EC	

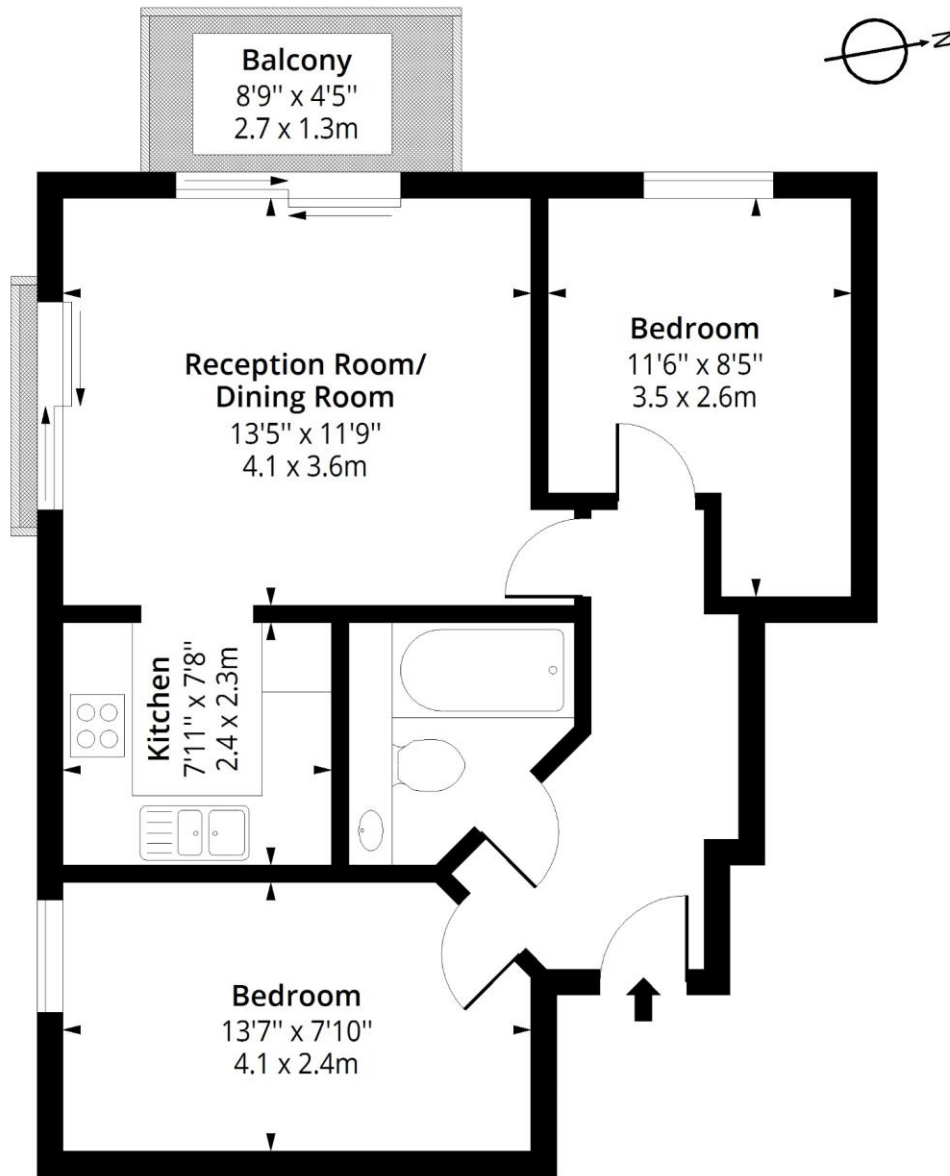
### *Chestertons Tower Bridge Lettings*

220 Tower Bridge Road  
 Tower Bridge  
 London  
 SE1 2UP  
 towerbridge@chestertons.co.uk  
 02073576911  
 chestertons.co.uk

Additional tenant charges apply (fees apply to non-AST tenancies only)  
 Tenancy Agreement Fee: £300  
 References per Tenant/Guarantor: £60  
 Inventory check (approx. £100 – £250 inc. VAT)  
 chestertons.co.uk/property-to-rent/applicable-fees

# Providence Square, SE1

Approx. Gross Internal Area 538 Sq Ft - 49.98 Sq M (Excluding Balcony)  
Approx. Gross Internal Area 577 Sq Ft - 53.60 Sq M (Including Balcony)



## Second Floor

Floor Area 538 Sq Ft - 49.98 Sq M

Floor plan is for illustrative purposes only and is not to scale. Every attempt has been made to ensure the accuracy of the floor plan shown, however all measurements, fixtures, fittings and data shown are an approximate interpretation for illustrative purposes only.

lpaplus.com

