



Lakeside Drive, NW10

£2,600 Per calendar month

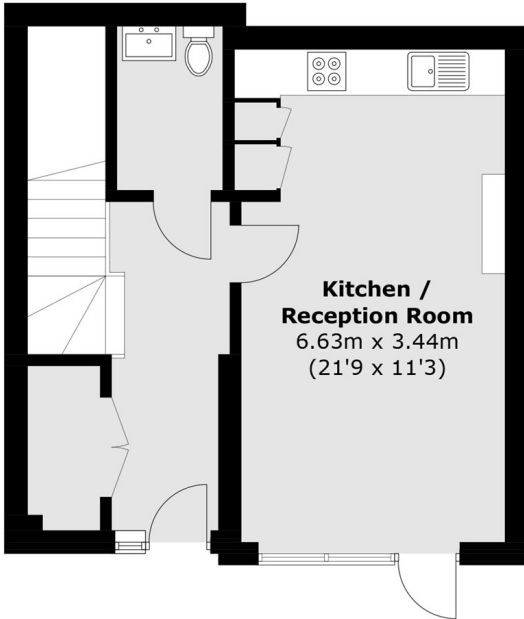
A beautifully presented three-bedroom, split-level maisonette with a private entrance, set within the pristine Viscount House development. The property features a spacious open-plan living and dining area, ideal for entertaining, which opens directly onto a private terrace.

Located within a five minute walk from Park Royal station (Piccadilly Line) and just over ten minutes from Hanger Lane station (Central Line). In addition, on your door step you have a Co-Op, Barbers, Dental practise and Nursery as well as being conveniently located within a ten minute walk from Royal Leisure Park which has a multitude of amenities including Pure Gym, Asda Superstore, Odeon Luxe Cinema and Tempin Bowling.

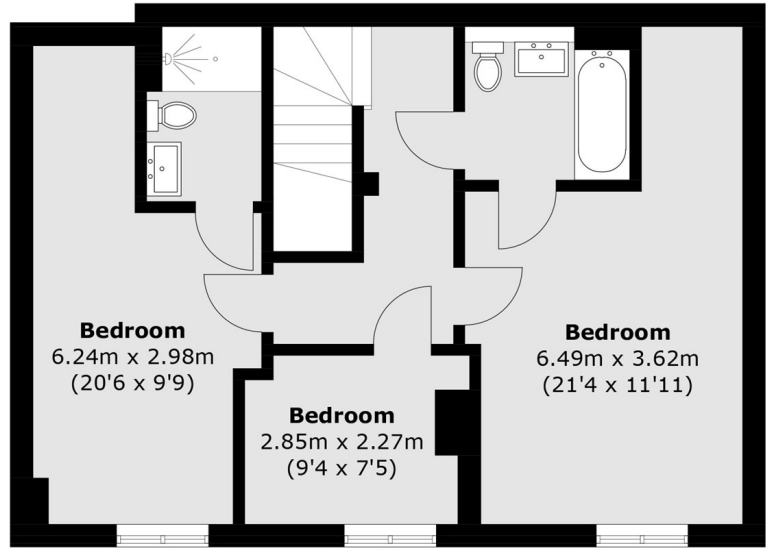
Features

- Maisonette
- Three Double Bedrooms
- Secure Allocated Parking
- Two Bathrooms
- Private Terrace
- Ample Storage Throughout

Lakeside Drive,
London, NW10



Ground Floor



First Floor

Total area (approx.): 100.6 sq. m (1,082.8 sq. ft)