



Drayton Green Road, W13

£320,000

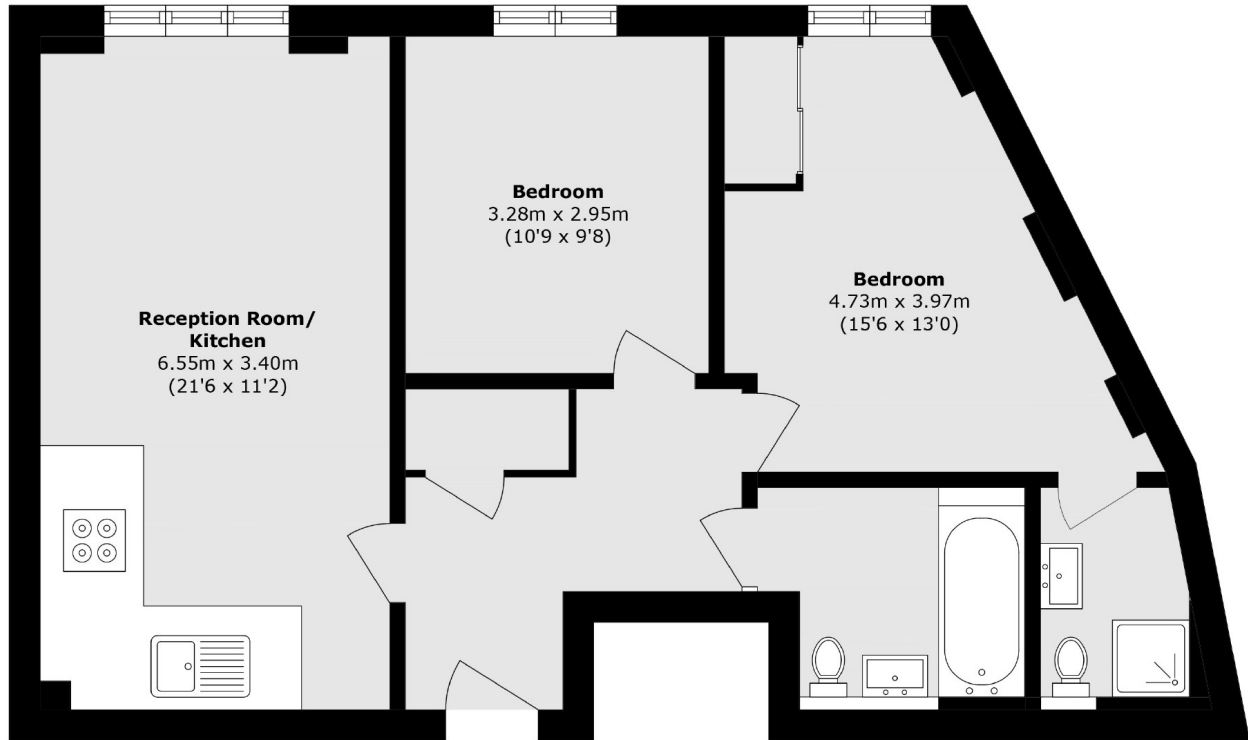
This well-presented two-bedroom, two-bathroom apartment is set on the raised ground floor of a modern development and offers an excellent opportunity for buyers seeking both space and connectivity in West Ealing. The property benefits from lift access and a recently renovated communal courtyard, and is offered in excellent condition throughout. Competitively priced and offering strong value for a two-bedroom apartment in this development.

Ideally located moments from Waitrose and West Ealing's Elizabeth Line station, providing fast connections to Bond Street (approx. 24 minutes) and Canary Wharf (approx. 40 minutes), with Heathrow accessible in under 20 minutes in the opposite direction.

Features

- Two Bedrooms
- Two Bathrooms
- Excellent Condition
- Communal Courtyard
- Rentable Secure Residents
- Zero Ground Rent
- No Onward Chain

Drayton Green Road, London, W13



Total area (approx.): 65.0 sq. m (699.6 sq. ft)