



Lausanne Road, SE15

£365,000

Beautifully presented Victorian flat which benefits from a private sunny south westerly facing garden.

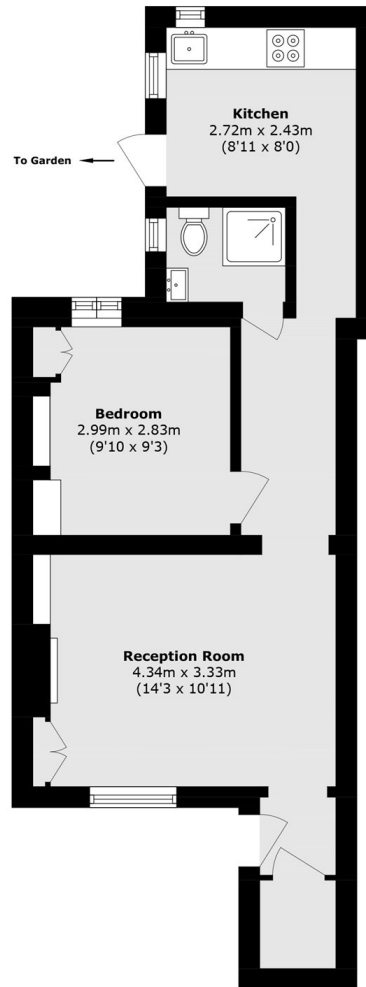
This end of terrace flat is being sold chain free with its own private entrance, and comprises a large front reception room, double bedroom, utility cupboard, and modern bathroom and kitchen. The kitchen provides direct access to the private south westerly facing garden perfectly positioned to capture the afternoon and evening sun.

Situated within easy reach of transport links, including Nunhead and Queens Road Peckham stations. Close to Telegraph Hill Park and Nunhead and Queens Road Peckham high streets.

Features

- One Bedroom Apartment
- Share Of Freehold
- Victorian Conversion
- Private South West Facing Garden
- Great Conditions Throughout
- Close To Nunhead and Queens Road Peckham Stations

Lausanne Road, London, SE15



Total area (approx.): 43.3 sq. m (466.0 sq. ft)