



Leighton Avenue, Atherton

Manchester



£220,000

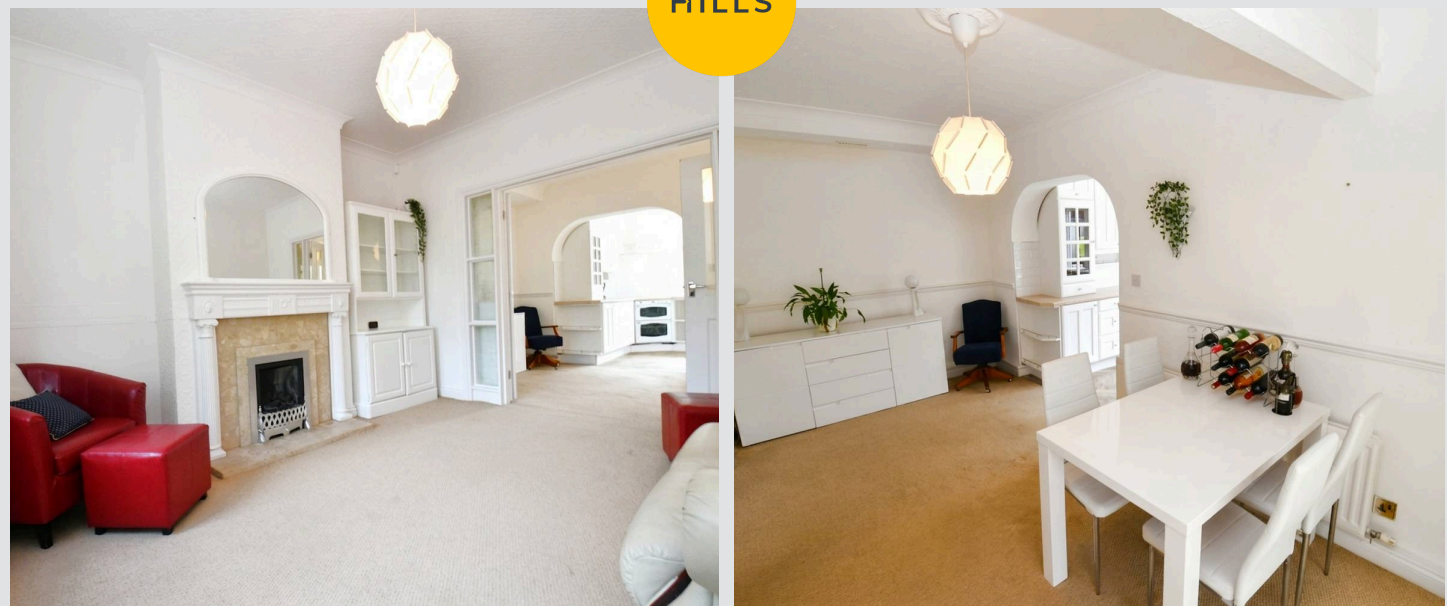
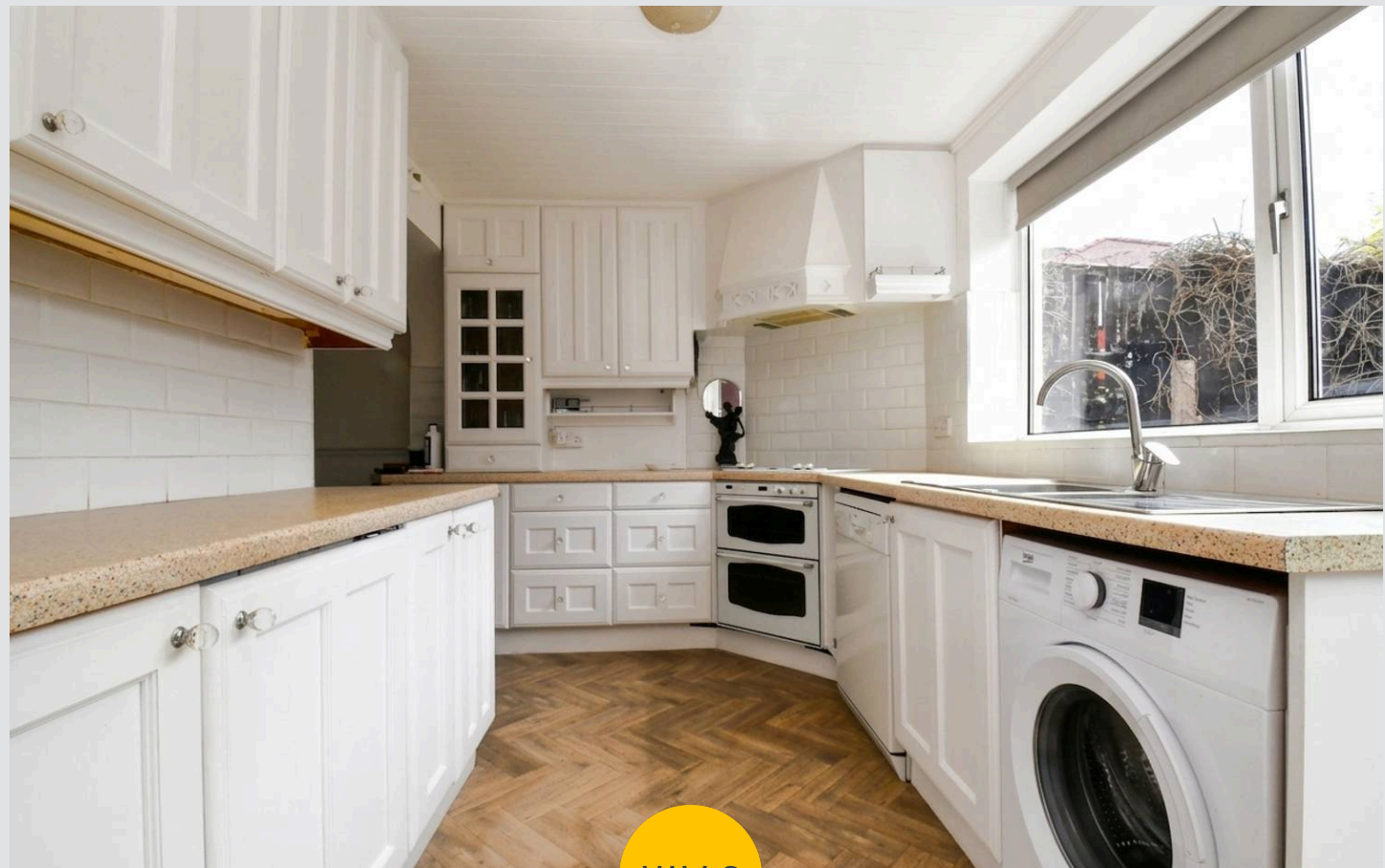
# 4 Leighton Avenue

Atherton, Manchester

Extended Three Bedroom Semi-Detached Property with a Quiet Outlook Over Greenery. Boasting Two Reception Rooms, a Conservatory, a Driveway and a Garage!

Council Tax band: B

- Charming, Extended Three Bedroom Semi-Detached Property
- Lovely Lounge and a Spacious Dining Room
- Well-Appointed Kitchen with Plenty of Storage
- Added Bonus of a Conservatory Providing Further Living Space
- Three Well-Proportioned Bedrooms
- Three-Piece Bathroom
- Opportunity to Put Your Own Stamp on a Property
- Driveway and a Detached Garage
- Close to Atherton Town Centre which is Host to a Fine Array of Amenities
- Within Easy Access of Transport Links, with the V2 Bus Nearby Providing Direct Access into Manchester City Centre



**Hallway**

**Lounge**

12' 5" x 11' 11" (3.78m x 3.62m)

**Dining Room**

15' 7" x 8' 5" (4.76m x 2.56m)

**Kitchen**

13' 4" x 7' 10" (4.07m x 2.39m)

**Conservatory**

18' 4" x 10' 2" (5.58m x 3.10m)

**Landing**

**Bedroom One**

11' 5" x 8' 9" (3.47m x 2.66m)

**Bedroom Two**

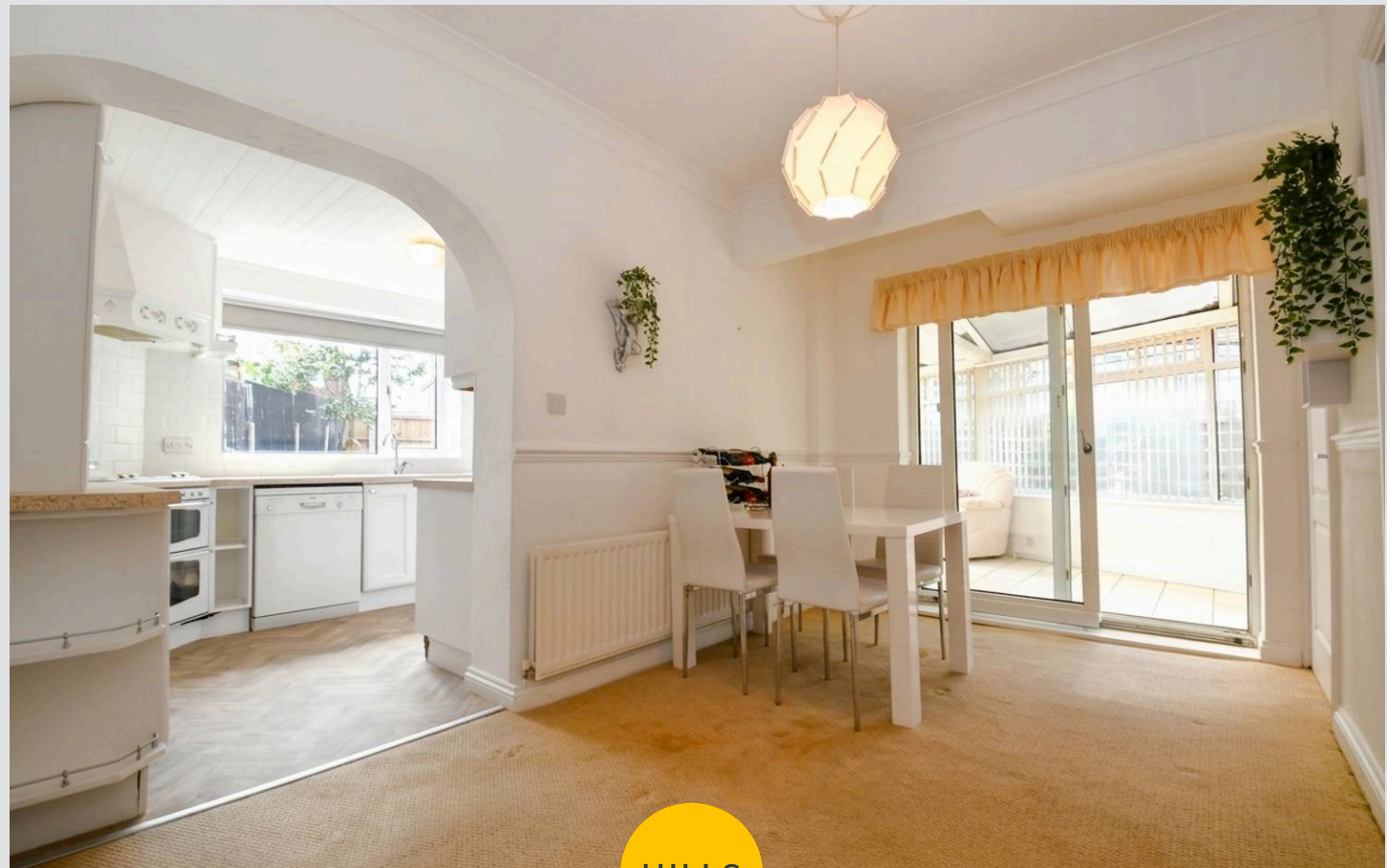
10' 0" x 9' 2" (3.06m x 2.80m)

**Bedroom Three**

8' 5" x 5' 3" (2.56m x 1.60m)

**Bathroom**

5' 8" x 2' 6" (1.73m x 0.75m)



## Hallway

## Lounge

12' 5" x 11' 11" (3.78m x 3.62m)

## Dining Room

15' 7" x 8' 5" (4.76m x 2.56m)

## Kitchen

13' 4" x 7' 10" (4.07m x 2.39m)

## Conservatory

18' 4" x 10' 2" (5.58m x 3.10m)

## Landing

## Bedroom One

11' 5" x 8' 9" (3.47m x 2.66m)

## Bedroom Two

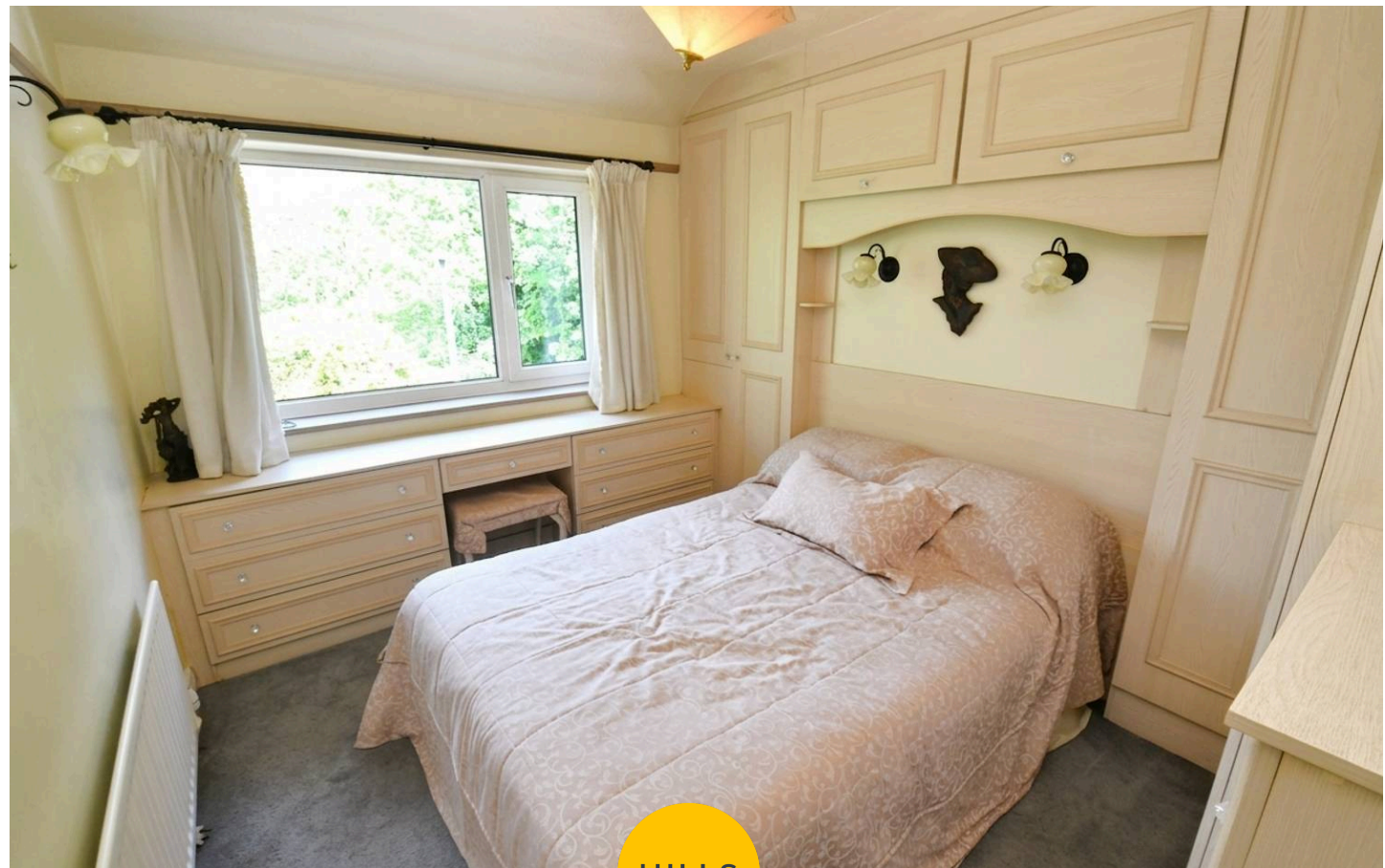
10' 0" x 9' 2" (3.06m x 2.80m)

## Bedroom Three

8' 5" x 5' 3" (2.56m x 1.60m)

## Bathroom

5' 8" x 2' 6" (1.73m x 0.75m)



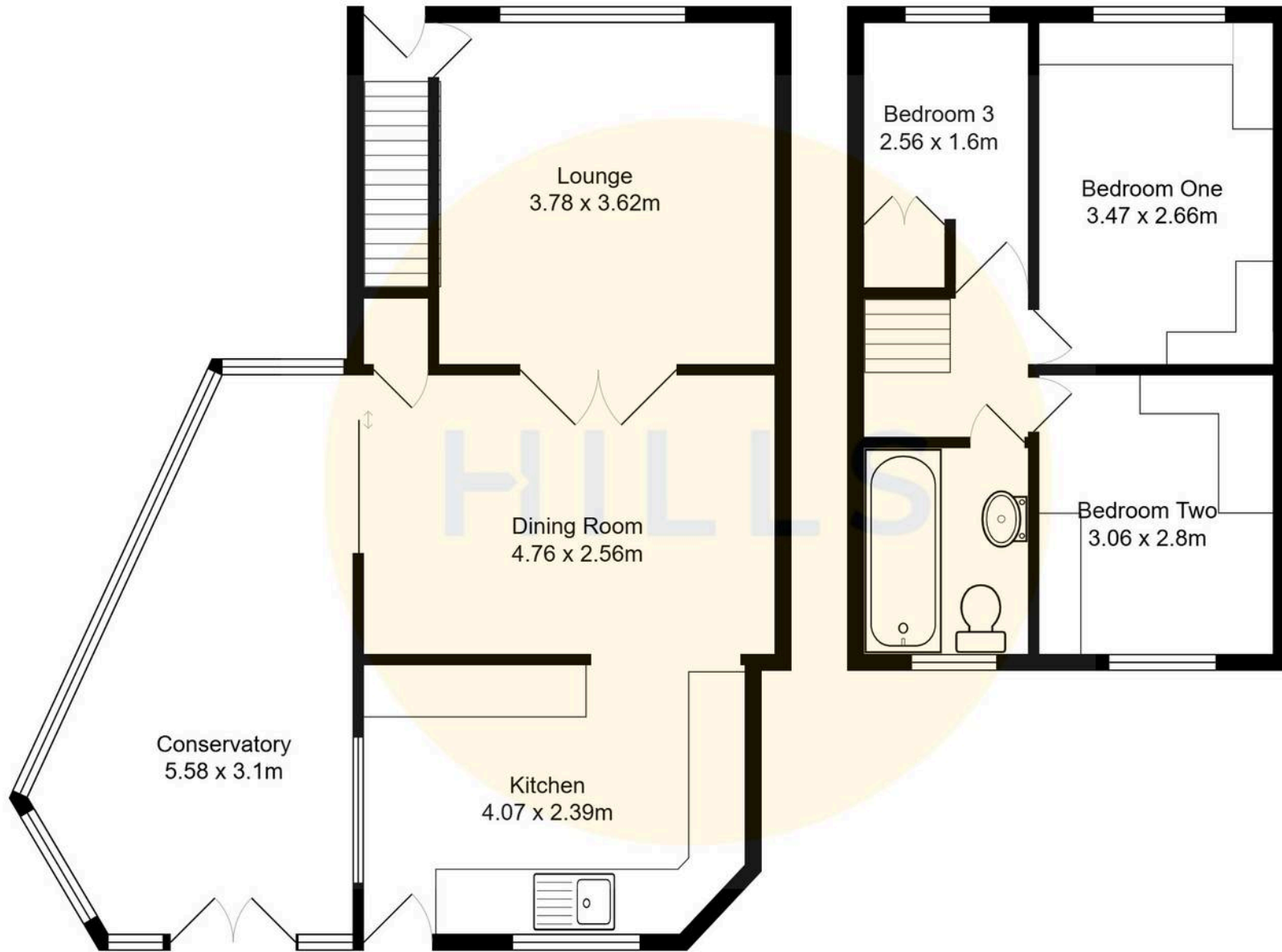
HILLS





HILLS







## Hills | Salfords Estate Agent

Hills Residential, Sentinel House Albert Street – M30 0SS

0161 707 4900

[sales@hills.agency](mailto:sales@hills.agency)

[www.hills.agency/](http://www.hills.agency/)



By law, we are required to conduct anti-money laundering checks on all potential buyers and sellers. In line with HMRC guidelines, our trusted partner, Coadjute, will securely manage these checks on our behalf. A non-refundable fee of £45 + VAT per person will apply, and Coadjute will handle the payment. Once an offer is accepted, Coadjute will send a secure link for you to complete the biometric checks. These checks must be completed before we can send the memorandum of sale to all parties. PLEASE NOTE: The Agent has not tested any equipment, fixtures, fittings or services so cannot verify that they are in working order or fit for the purpose. References to the properties tenure are based on information supplied by the seller. You are advised to check the availability of this property before travelling any distance to view. Every effort has been made to ensure these particulars are correct and not misleading but their accuracy is not guaranteed nor do they form part of any contract.