



Tressard Court

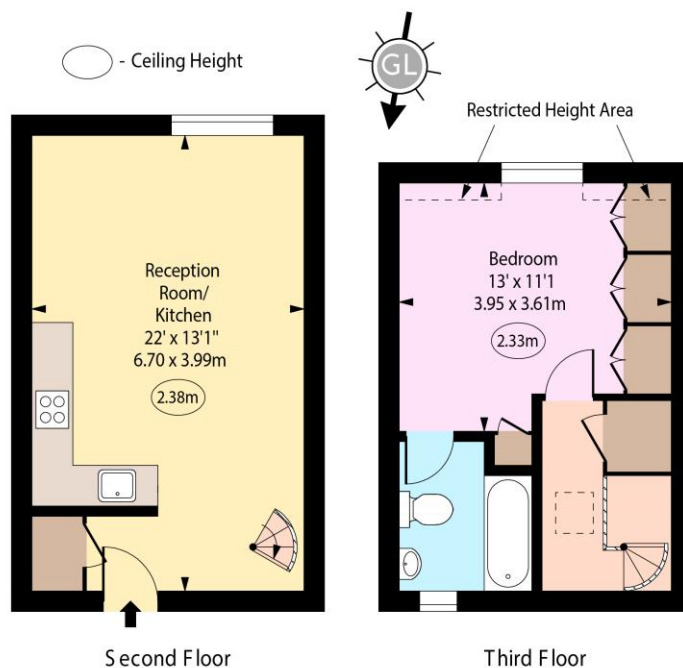
46-48 Harrowby Street, W1H

Asking Price £560,000

A bright and well-presented one-bedroom duplex apartment arranged over the second and third floors of a charming period building on Harrowby Street, Marylebone. Spanning approximately 540 sq ft, the property features a south-facing aspect, an open-plan kitchen and reception room with wood flooring, and a comfortable double bedroom. Offered with a long lease of 167 years, it represents an excellent rental investment, pied-à-terre, or first-time purchase. Ideally located close to the boutiques, restaurants, and cafés of Marylebone, as well as excellent transport links, this apartment combines period charm with modern convenience.

CHESTERTONS

Tressard Court,
Harrowby Street, W1H



Approx Gross Internal Area

540 Sq Ft - 50.17 Sq M

Approx. Floor Area Including Restricted Heights

548 Sq Ft - 50.91 Sq M

Every attempt has been made to ensure the accuracy of the floor plan shown. However, all measurements, fixtures, fittings, and data shown are approximate interpretations and for illustrative purposes only. Measured according to the RICS. Not To Scale.

www.goldlens.co.uk
Ref. No. 029241WI

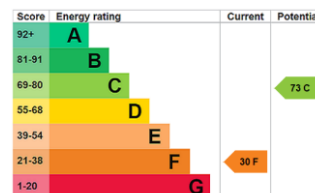
Tenure: Leasehold 167 years (29/06/2193)

Service Charge: £2699.47 per annum

Ground Rent: None

Local Authority: City of Westminster

Council Tax Band: E



Chestertons Hyde Park & Marylebone Sales

40 Connaught Street
London
W2 2AB
hydepark@chestertons.co.uk
020 7298 5900
chestertons.co.uk

Chesterton UK Services Limited trading as Chestertons for themselves and for the vendor of this property whose agents they are, give notice that (i) these particulars do not constitute any part of an offer or contract, (ii) all statements contained within these particulars are made without responsibility on the part of Chestertons or the vendor, (iii) whilst made in good faith, none of the statements contained within these particulars are to be relied upon as a statement or representation of fact, (iv) any intending purchasers must satisfy themselves by inspection or otherwise as to the correctness of each of the statements contained within these particulars, (v) the vendor does not make or give either Chestertons or any person in their employment any authority to make or give representation or warranty whatsoever in relation to this property. Wide angle lenses may be used. ©Copyright Chestertons | Chesterton UK Services Limited | Registered Office 40 Connaught Street, Hyde Park, London W2 2AB Registered Company Number 05334580.



This paper is
100% recyclable