

Frank Harris & Co.



Lambs Conduit Street, WC1N

£650,000

Positioned on the ever-popular Lamb's Conduit Street, this spacious second floor apartment is offered with no onward chain.

The home comprises a large west-facing double bedroom with built in wardrobes, excellent original flooring a bright reception room flooded with natural light, a modern en-suite, a separate WC and utility room and a modern fitted kitchen.

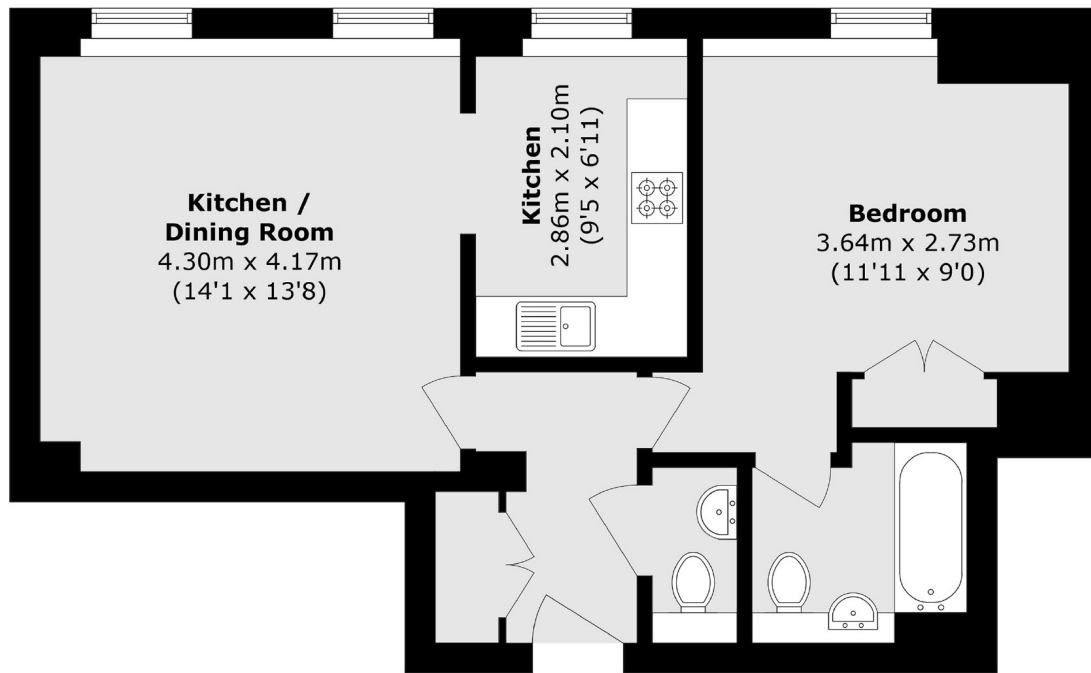


Lamb's Conduit Street blends historic charm with a village feel, featuring independent boutiques, cafés, wine bars and restaurants. Located between Bloomsbury and Clerkenwell, it benefits from excellent transport links via King's Cross and St Pancras, plus nearby green spaces like Coram's Fields and Russell Square.

- No Onward Chain • 2nd Floor • Lift Access •
- Large One Double Bedroom • Excellent Transport Links • Lamb's Conduit Street •



Frank Harris & Co.



Total area (approx.): 52.4 sq. m (564.0 sq. ft)

Frank Harris & Co. Bloomsbury and Kings Cross
81 Marchmont Street,
London, WC1N 1AL
020 7405 4444
bloomsburysales@frankharris.co.uk

Energy Rating: . We aim to make our particulars both accurate and reliable. However they are not guaranteed; nor do they form part of an offer or contract. If you require clarification on any points then please contact us, especially if you're traveling some distance to view. Please note that appliances and heating systems have not been tested and therefore no warranties can be given as to their good working order.

