



CLEVELAND STREET, W1T

£2,450,000

Three double bedrooms
Three bathrooms
Balcony
24 hour concierge
Gym
Prime location

@marshandparsons
marshandparsons.co.uk

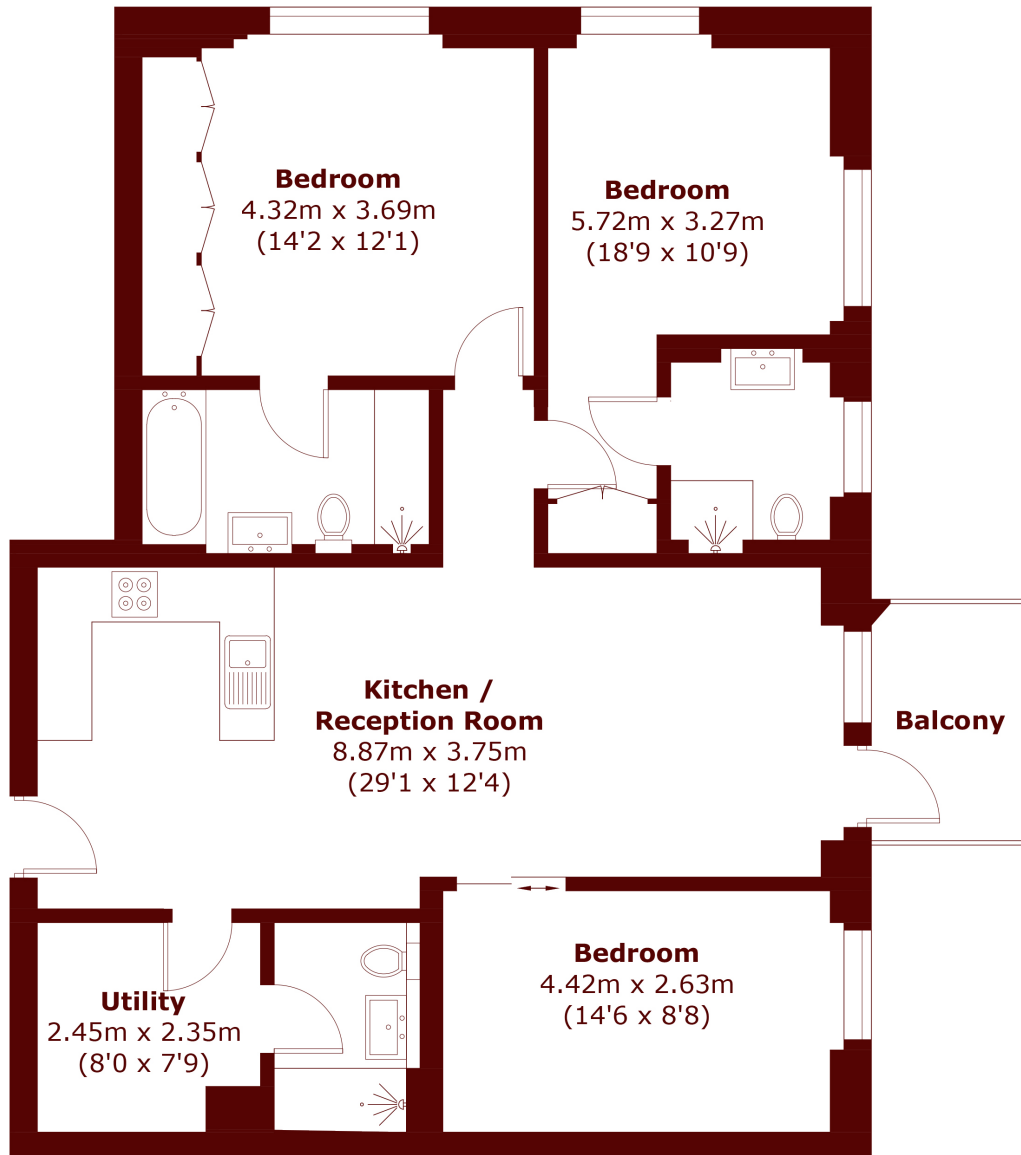
MARSH &
PARSONS



ABOUT THE PROPERTY

An excellent three bedroom apartment located in the fashionable area of Fitzrovia just a short walk from both Oxford Street, Tottenham Court Road and the ever popular Charlotte Street. The lateral space spreads over 1,000 sqft and benefits from one en suite bathroom, an en suite shower room, a separate shower room and utility room. Further benefits include an open plan kitchen-reception area and balcony with views over looking London as well as 24 hour concierge team, gym, residents lounge and screening room.

STEP INSIDE CLEVELAND STREET



Seventh Floor

Total area (approx.): 100.2 sq. m (1078.5 sq. ft)
Balcony: 4.5 sq. m (48.4 sq. ft)

Marylebone & Mayfair
020 7935 1775

Energy Rating: B We aim to make our particulars both accurate and reliable. However, they are not guaranteed; nor do they form part of an offer or contract. If you require clarification on any points then please contact us, especially if you're traveling some distance to view. Please note that appliances and heating systems have not been tested and therefore no warranties can be given as to their good working order

MARSH &
PARSONS