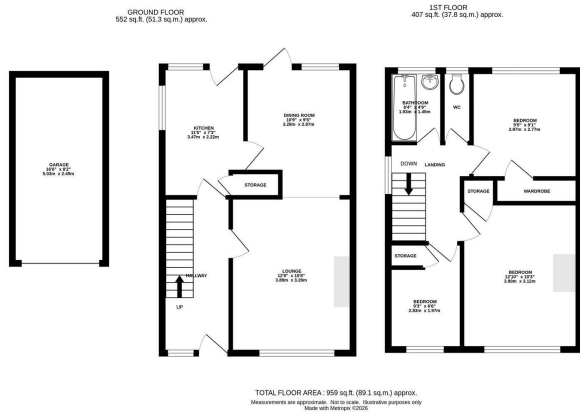




**Keith
Ashton**

Lavender Avenue, Pilgrims Hatch
Brentwood

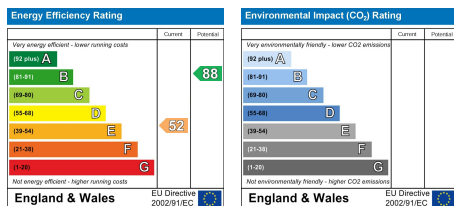


11 Lavender Avenue, Pilgrims Hatch, Brentwood, CM15 9PS

We are delighted to present this excellent opportunity to renovate a semi-detached home located within the ever-popular Flowers Development in Pilgrims Hatch. Offered with No Onward Chain, this chalet-style bungalow provides great scope for improvement and personalisation.

The property features three bedrooms, a detached garage and a west-facing garden. Ideally situated less than two miles from Brentwood High Street and the mainline train station, it offers excellent transport links into London and beyond. With a selection of highly regarded schools close by, this home combines great potential to create a fantastic long-term home in a prime location.

£375,000



SERVICES:

Local Authority: Brentwood
Council tax band: D
Post code: CM15 9PS

VIEWING:

Strictly by prior arrangement with Keith Ashton Estate Agents

OPENING HOURS:

Monday to Friday: 8.45AM - 6.30PM | Saturdays: 9AM - 5.30PM | Sundays: 10AM - 2PM

MORTGAGE INFORMATION:

We offer the additional facility of an in-house Independent Financial Adviser who will access all mortgage lenders with the purpose of providing you with the benefit of choice. For quotations or comparables please call 01277 260858 or visit our interactive website at www.mortgagebusiness.net



We the Agent have not tested any apparatus, fittings or services for this property. The plot size is intended merely as a guide and has not been officially measured or verified by the Agent. Photographs are for illustration only and may depict items which are not for sale or included in the sale of the property. As part of the service we offer we may recommend ancillary services to you which we believe may help you with your property transaction. We wish to make you aware, that should you decide to use these services we will receive a referral fee. For full and detailed information please visit 'terms and conditions' on our website www.keithashton.co.uk

Brentwood
Tel. 01277 260858

Village Office
Tel. 01277 375757

Lettings Office
Tel. 01277 202200

Explore more @ www.keithashton.co.uk

