



Cumberland Mills Square

London, E14

Asking Price £500,000

A stunning 2 bed, 2 bath, light-filled home in the heart of London's vibrant E14 area, offering the perfect blend of modern convenience and serene living.

CHESTERTONS



Cumberland Mills Square

London, E14

- 2 Bedrooms | 2 Bathrooms
- Waterside development in the heart of E14
- Bright and airy interiors with large windows allowing for excellent natural light
- Open-plan living and dining area
- Contemporary fully integrated kitchen
- Private patio garden, perfect for outdoor dining
- Approx. 0.3 km from Crossharbour DLR Station
- Close to supermarkets, cafés, restaurants, and leisure facilities



A stunning, light-filled home in the heart of London's vibrant E14 area, offering the perfect blend of modern convenience and serene living. This beautifully designed property features a spacious, open-plan layout with expansive windows that flood the interiors with natural light, creating a warm and inviting atmosphere throughout.

The heart of the home is the contemporary integrated kitchen, complete with high-quality appliances including a, oven, hob, and dishwasher, perfect for both casual dining and entertaining. The generous living spaces flow seamlessly onto a private garden, providing an ideal spot for relaxation, alfresco dining, or entertaining guests.

Additional highlights include well-proportioned bedrooms, ample storage solutions, and a sense of calm that belies its central location.

Residents benefit from a wide range of local amenities, including boutique shops, cafés, and restaurants, as well as

Tenure: Leasehold 87 years approx. remaining.

Service Charge: £5,554 pa approx..

Ground Rent: Peppercorn

Local Authority: Tower Hamlets

Council Tax Band: F

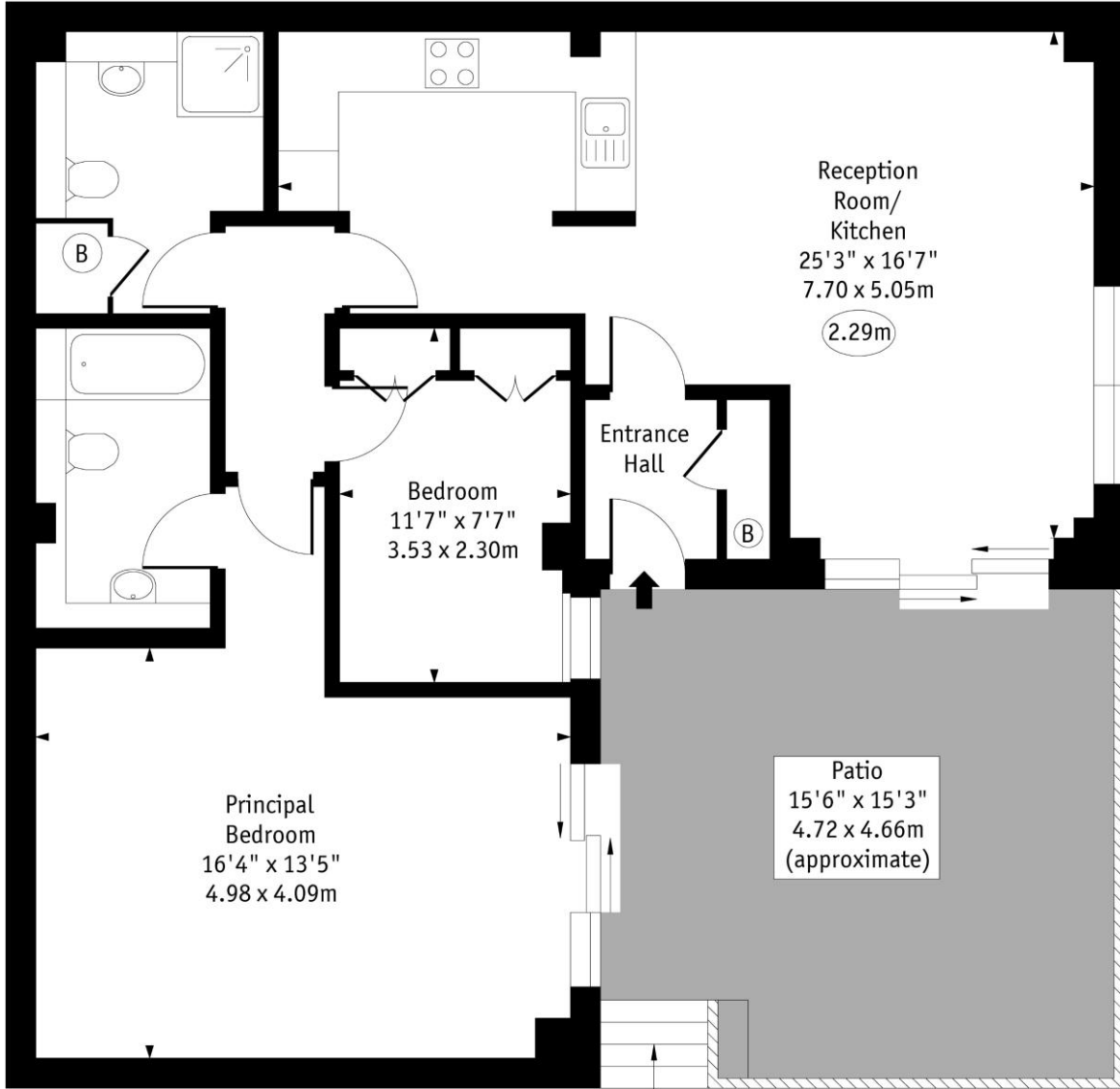
Score	Energy rating	Current	Potential
92+	A		
81-91	B		
69-80	C		
55-68	D	68 D	73 C
39-54	E		
21-38	F		
1-20	G		

Chestertons Canary Wharf & Greenwich Sales

Harbour Island
 28 Harbour Exchange Square
 London
 E14 9GE
 canarywharf@chestertons.co.uk
 020 7510 8300
 chestertons.co.uk

Cumberland Mills Square, E14

○ - Ceiling Height



Ground Floor

Approx Gross Internal Area 874 Sq Ft - 81.24 Sq M

Every attempt has been made to ensure the accuracy of the floor plan shown. However, all measurements, fixtures, fittings, and data shown are approximate interpretations and for illustrative purposes only. Measured according to the RICS. Not To Scale.

www.goldlens.co.uk
Ref. No. 031240DH

