



Luxborough Street, W1U

£675 Per week

This well-presented flat is situated within a popular purpose built block moments from Marylebone High Street, with a lift and caretaker.

There are superb transport links, with Baker Street, Marylebone and Edgware Road Underground stations nearby, as well as Marylebone Mainline station.

Features

- One Double Bedroom
- Second Bedroom/Study
- One Bathroom
- Lift & Live-In Caretaker
- Spacious Reception
- Wood Flooring



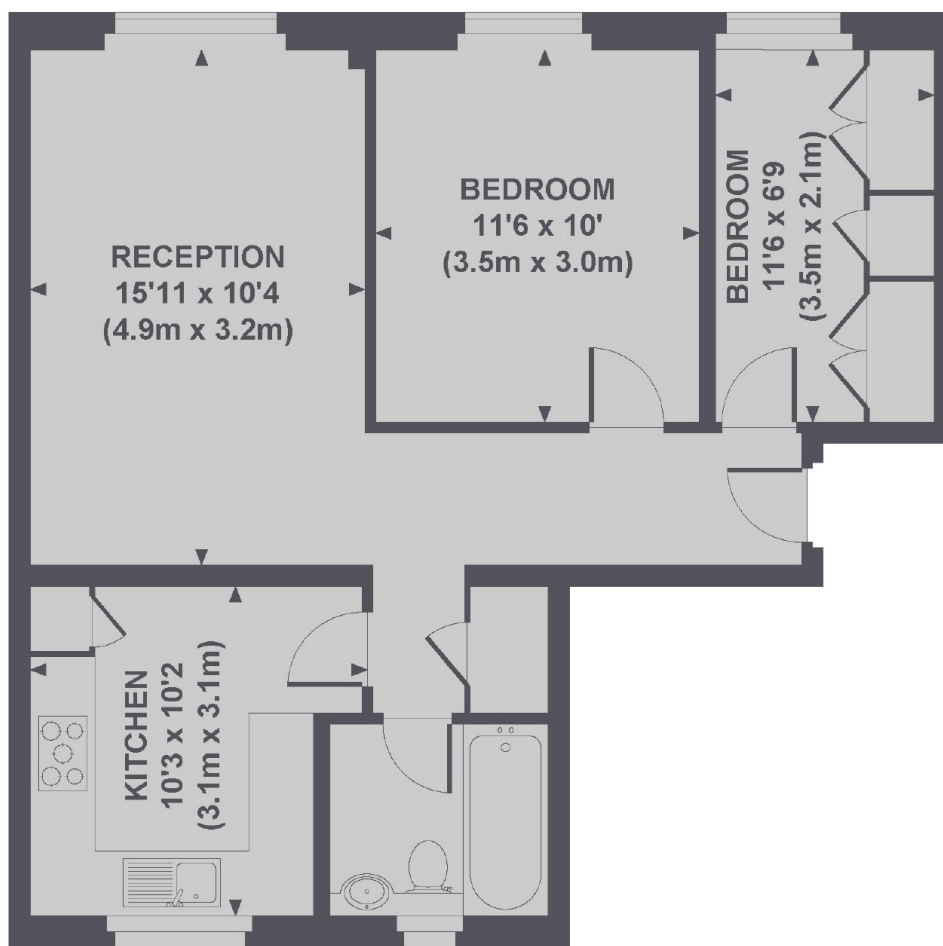
Luxborough Street, W1U

The flat has a good sized reception room with space for both living and dining areas, a separate modern kitchen, bathroom, one double bedroom and a second bedroom/office.

Luxborough Street is just off Paddington Square Gardens with the vibrant shops, bars and restaurants of Marylebone High Street and Chiltern Street close by.



Luxborough Street, London, W1U



Approx. gross internal area 600 Sq Ft. / 55.8 Sq M.

Dexters

Marylebone
53-55 Weymouth Street
London
W1G 8NJ
Lettings
0207 224 5545

Energy Rating: D. We aim to make our particulars both accurate and reliable. However they are not guaranteed; nor do they form part of an offer or contract. If you require clarification on any points then please contact us, especially if you're traveling some distance to view. Please note that appliances and heating systems have not been tested and therefore no warranties can be given as to their good working order.

 **RICS** | Regulated
Estate Agent
and Letting Agent

[dexters.co.uk](https://www.dexters.co.uk)