

CHRISTOPHER HODGSON



**Whitstable**

**£195,000**    Leasehold

FOR COASTAL, COUNTRY  
& CITY LIVING

---

# Whitstable

## *209 Olympia Way, Whitstable, Kent, CT5 3FP*

A contemporary third floor apartment forming part of the desirable Swale Park development on the outskirts of Whitstable. The property is conveniently positioned within close proximity to supermarkets, schooling options, bus routes, and is easily accessible to Whitstable town centre, seafront and station (0.8 miles).

The comfortably proportioned accommodation has been finished to a high specification throughout and is arranged

to provide an entrance hall, open-plan living room incorporating a smartly fitted kitchen area with integrated appliances, two double bedrooms (one of which benefits from a built-in wardrobe), and two stylish bathrooms including an en-suite bathroom room to the principal bedroom.

The apartment benefits from one allocated parking space.



### LOCATION

Olympia Way forms part of a desirable modern development, conveniently positioned for access to Whitstable and within close proximity to Tesco supermarket and The Crab & Winkle Way, which forms part of the National Cycle Network Route and follows the path of an old railway line linking Whitstable with Canterbury through Blean Woods, one of the largest areas of ancient broad leaved woodland in the South of England. Whitstable is an increasingly popular and fashionable town by the sea which enjoys a variety of shopping, educational and leisure amenities including sailing, watersports, bird watching and walking as well as the seafood restaurants for which it has become renowned. Whitstable mainline railway station offers fast and frequent services to London (Victoria) approximately 80mins and the surrounding area. The high speed Javelin service provides access to London (St Pancras) with a journey time of approximately 73mins. The A299 is also easily accessible offering access to the A2/ M2 linking to the channel ports and subsequent motorway network.

### ACCOMMODATION

The accommodation and approximate measurements (taken at maximum points) are:

#### THIRD FLOOR

- Communal Hall 20'10" x 4'11" (6.35m x 1.50m )
- Entrance Hall
- Living Room/Kitchen 24'7" x 11'6" (7.50m x 3.50m)

- Bedroom 1 16'9" x 9'1" (5.10m x 2.76m)
  - En-Suite Bathroom
  - Bedroom 2 9'11" x 9'1" (3.03m x 2.76m)
  - Bathroom
  - Parking
- One allocated parking space.

#### Lease

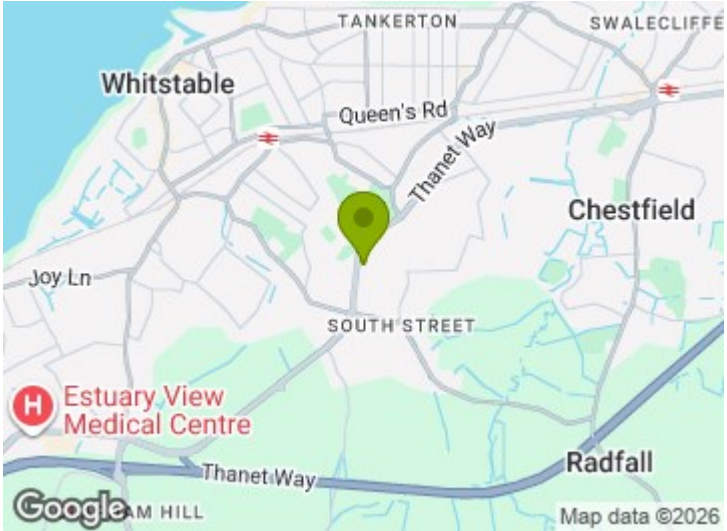
The property is being sold with the remainder of a 125 year lease granted on 1st January 2011 (subject to confirmation from vendor's solicitor).

#### Ground Rent

We have been advised that the Ground Rent for 2025/2026 is £300.00 per annum (subject to confirmation from vendor's solicitor).

#### Service Charge

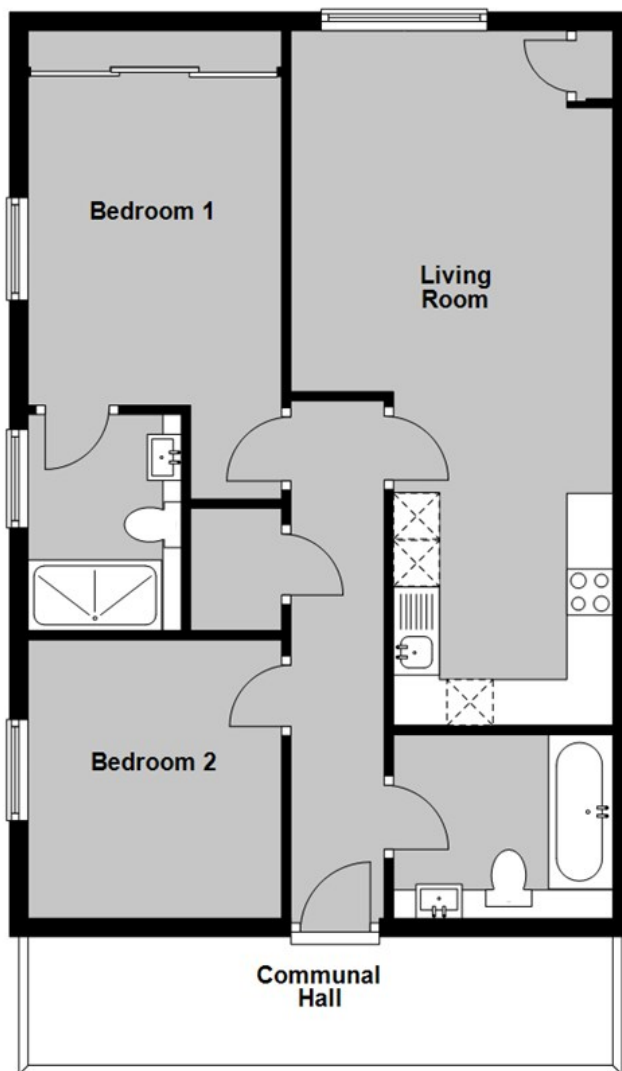
We have been advised that the Service Charge for the year 2025/2026 is £1,154.24 (subject to confirmation from vendor's solicitor).





### Third Floor

Approx. 61.3 sq. metres (660.1 sq. feet)



Total area: approx. 61.3 sq. metres (660.1 sq. feet)

**Council Tax Band B. The amount payable under tax band B for the year 2025/2026 is £1,791.42.**

Christopher Hodgson Estate Agents for itself and as for the vendor or lessor (as appropriate) gives notice that: 1 These particulars are only a general outline for the guidance of intending purchasers or lessees and do not constitute in whole or in part an offer or a Contract. 2 Reasonable endeavours have been made to ensure that the information given in these particulars is materially correct but any intending purchaser or lessee should satisfy themselves by inspection, searches, enquiries and survey as to the correctness of each statement. 3 All statements in these particulars are made without responsibility on the part of Christopher Hodgson Estate Agents or the vendor or lessor. 4 No statement in these particulars is to be relied upon as a statement or representation of fact. 5 Neither Christopher Hodgson Estate Agents nor anyone in its employment or acting on its behalf has authority to make any representation or warranty in relation to this property. 6 Nothing in these particulars shall be deemed to be a statement that the property is in good repair or condition or otherwise nor that any services or facilities are in good working order. 7 Photographs may show only certain parts and aspects of the property at the time when the photographs were taken and you should rely upon actual inspection. 8 No assumption should be made in respect of parts of the property not shown in photographs. 9 Any areas, measurements or distances are only approximate. 10 Any reference to alterations or use is not intended to be a statement that any necessary planning, building regulation, listed building or any other consent has been obtained. 11 Amounts quoted are exclusive of VAT if applicable. 12 Whilst reasonable endeavours have been made to ensure the accuracy of any floor plan contained in these particulars, all measurements and areas are approximate and no responsibility is taken for any error, omission or mis-statement. This plan is for illustrative purposes only and should be used as such by any prospective purchaser. 13 Any mapping contained within these particulars is for illustrative purposes only and should be used as such by any prospective purchaser. No responsibility is taken for any error, omission or mis-statement. 14 Any computer generated images contained within these particulars are for illustrative purposes only and should be used as such by any prospective purchaser.

Energy Efficiency Rating		Current	Potential
Energy efficient - lower rating costs	Energy efficient - lower rating costs		
Band A	Band A	82	82
Band B	Band B		
Band C	Band C		
Band D	Band D		
Band E	Band E		
Band F	Band F		
Band G	Band G		
Energy efficient - higher rating costs			
England & Wales		ET 2019/20	2020/21 EC

95-97 TANKERTON ROAD, WHITSTABLE CT5 2AJ | CHRISTOPHERHODGSON.CO.UK

