



3 Moorland Close, Harrogate

£295,000



**YOUR AWARD
WINNING AGENT**

#DARINGTODIFFERENT



A spacious three-bedroom semi-detached bungalow, quietly tucked away within a discreet cul-de-sac just off Forest Lane, on Harrogate's sought-after eastern side.

Externally, the property enjoys well-maintained gardens to both the front and rear. The front garden is attractively arranged with planted borders and shrubs, creating an appealing approach, alongside a driveway providing ample off-street parking and leading to a detached garage. To the rear, there is an enclosed, low-maintenance garden predominantly laid to paving, ideal for outdoor seating and entertaining, and offering a good degree of privacy.

Enjoying a delightful end-of-cul-de-sac position, the property benefits from a peaceful setting on the edge of open countryside, while remaining conveniently placed for the excellent local amenities of Starbeck, including shops and a railway station. Harrogate and Knaresborough town centres are also within easy reach.

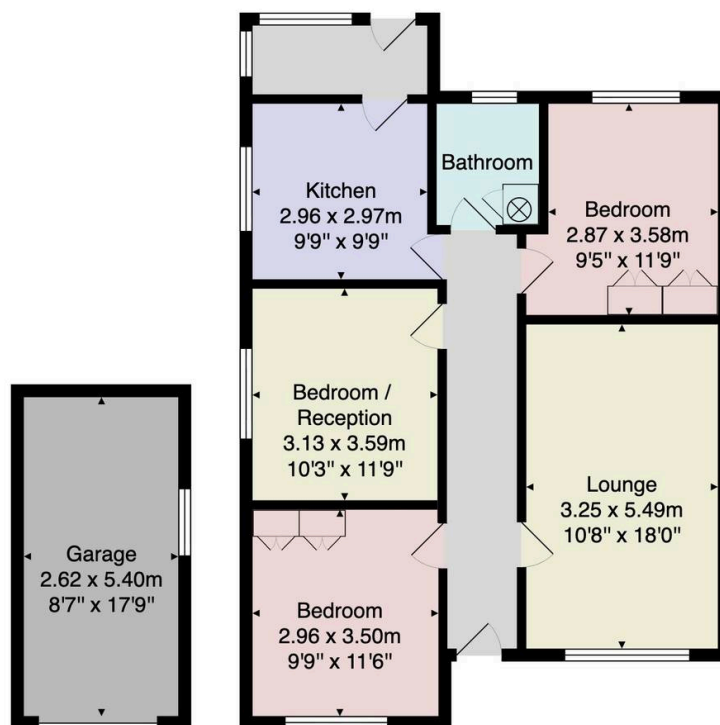
Council Tax band: C

Tenure: Freehold



The property offers buyers an excellent opportunity to update and modernise the accommodation to suit their own requirements. The internal layout comprises a wide entrance hall, a well-proportioned sitting room with a central fireplace and a large window allowing for plenty of natural light, and a spacious dining kitchen fitted with a range of wall and base units, offering ample worktop space and room for dining. A separate utility room to the rear provides additional practicality and storage. There are three well-proportioned double bedrooms and a modern shower room fitted with a walk-in shower, wash hand basin and WC.





Total Area: 80.1 m² ... 863 ft² (excluding garage)

All measurements are approximate and for display purposes only.

No liability is accepted by either the agency or Box Property Solutions Ltd as to the exact measurements of the rooms.
 Box Property Solutions Ltd retains the copyright on this plan and allows agents to use it with agreed permission.

