



**Rushmead Drive, Maidstone, ME15 9UD**  
**Price £575,000**



#### IMPRESSIVE FIVE BEDROOM DETACHED HOME WITH LARGE GARDEN AND DOUBLE GARAGE

Situated in the highly sought-after village of Loose, the property is close to local amenities, picturesque surroundings, and excellent schools. Maidstone town centre is easily accessible, with frequent bus services nearby. Families will also benefit from the property's proximity to Maidstone's well-regarded grammar schools.

This well-presented five bedroom detached home offers spacious and highly versatile living accommodation, making it an ideal choice for families.

On the ground floor, the property features a welcoming entrance hall leading to a bright and airy lounge, a separate dining room, and a well-appointed kitchen complemented by an adjoining utility room, which provides direct access to the garden. Additional benefits include a useful downstairs shower room with WC and an integral double garage.

The first floor provides five well-proportioned bedrooms, including four excellent-sized doubles and a comfortable fifth bedroom that could also serve as a home office or nursery. The principal bedroom benefits from an en-suite bathroom with adjoining dressing room, while the remaining bedrooms are served by a modern family bathroom.

Externally, the property enjoys a large rear garden and car port, ideal for outdoor living, family activities, and entertaining. Viewing is highly recommended. Contact Page and Wells Loose Office today and booked your viewing to avoid missing out



**GROUND FLOOR**

**Entrance Hall**

**Lounge 21'8" x 12'10" (6.61m x 3.92m)**

**Kitchen 13'11" x 9'11" (4.26m x 3.03m)**

**Dining Room 14'1" x 9'10" (4.31m x 3.02m)**

**Utility Room 13'10" x 9'4" (4.22m x 2.87m)**

**Shower Room 7'67" x 7'02" (2.13m x 2.18m)**

**FIRST FLOOR**

**Bedroom 1 14'1" x 10'7" (4.30m x 3.25m)**

**En-Suite 9'48" x 5'47" (2.74m x 1.52m)**

**Dressing Room 4'79" x 9'48" (1.22m x 2.74m)**

**Bedroom 2 13'1" x 9'8" (4.01m x 2.96m)**

**Bedroom 3 12'0" x 10'7" (3.67m x 3.24m)**


**Bedroom 4 11'11" x 9'11" (3.65m x 3.04m)**

**Bedroom 5 10'0" x 9'4" (3.07m x 2.85m)**

**Family Bathroom 7'82" x 6'56" (2.13m x 1.83m)**

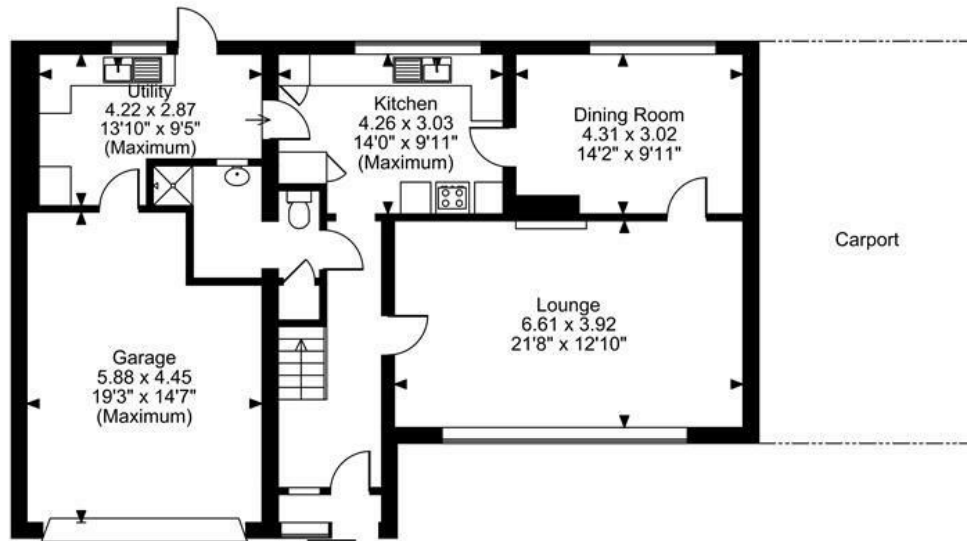
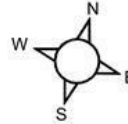
**EXTERNALLY**

**Garage 19'3" x 14'7" (5.88m x 4.45m)**

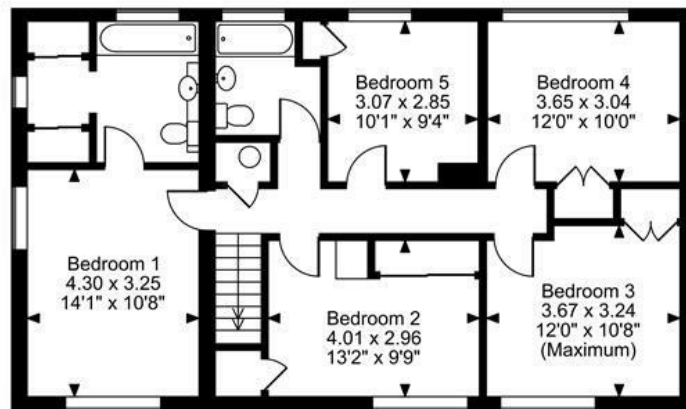
| Energy Efficiency Rating                           |                            |   |
|--|----------------------------|---|
|  | Current                    | Potential   |
| <i>Very energy efficient - lower running costs</i> |                            |   |
| (92 plus) <b>A</b>                                 |                            |   |
| (81-91) <b>B</b>                                   |                            |   |
| (69-80) <b>C</b>                                   |                            |   |
| (55-68) <b>D</b>                                   |                            |   |
| (39-54) <b>E</b>                                   |                            |   |
| (21-38) <b>F</b>                                   |                            |   |
| (1-20) <b>G</b>                                    |                            |   |
| <i>Not energy efficient - higher running costs</i> |                            |   |
| <b>England &amp; Wales</b>                         | EU Directive<br>2002/91/EC |  |

Page & Wells limited for themselves and for the vendors of this property whose agents they are give notice that: 1. These particulars do not constitute any part of, an offer or a contract. 2. All statements contained in these particulars as to this property are made without responsibility on the part of Page & Wells Limited or the Vendor. 3. None of the statements contained in these particulars as to the property is to be relied on as statements or representations of fact. 4. Any intending purchaser must satisfy himself by inspection or otherwise as to the correctness of each of the statements contained in these particulars. 5. The vendor does not make or give, and neither Page & Wells Limited nor any person in their employment has any authority to make or give any representation whatsoever in relation to this property. These particulars are supplied on the understanding that all negotiations are carried out throughout Page & Wells Limited. Properties with a reference prefixes EAA are those which Page & Wells Limited disclose an interest in accordance with the provisions of the Estates Agents Act 1979

**Rushmead Drive, Maidstone**  
**Approximate Gross Internal Area**  
**Main House = 1811 Sq Ft/168 Sq M**  
**Garage = 260 Sq Ft/24 Sq M**  
**Total = 2071 Sq Ft/192 Sq M**  
 Quoted Area Excludes 'External Carport'



**Ground Floor**



**First Floor**

**FOR ILLUSTRATIVE PURPOSES ONLY - NOT TO SCALE**

The position & size of doors, windows, appliances and other features are approximate only.

© ehouse. Unauthorised reproduction prohibited. Drawing ref. dig/8683931/LCO

