

Shenley Avenue

Ruislip • Middlesex • HA4 6BY

Guide Price: £875,000



coopers
est 1986

Shenley Avenue

Ruislip • Middlesex • HA4 6BY

Located on the ever-popular Shenley Avenue, this substantial five-bedroom semi-detached home presents a rare opportunity to secure a spacious and versatile property in one of Ruislip's most desirable residential locations. Offered to the market chain free, this home is ideal for growing families or buyers looking for generous living space, a well-connected setting, and the ability to personalise to taste.

NO CHAIN

SEMI DETACHED HOUSE

FIVE BEDROOMS

TWO RECEPTION ROOMS

THREE BATHROOMS

OFF STREET PARKING

EXTENDED KITCHEN

UTILITY ROOM

SOUGHT AFTER LOCATION

1,998 SQ.FT. TOTAL

These particulars are intended as a guide and must not be relied upon as statements of fact. Your attention is drawn to the Important Notice on the last page.





Shenley Avenue, Ruislip, HA4

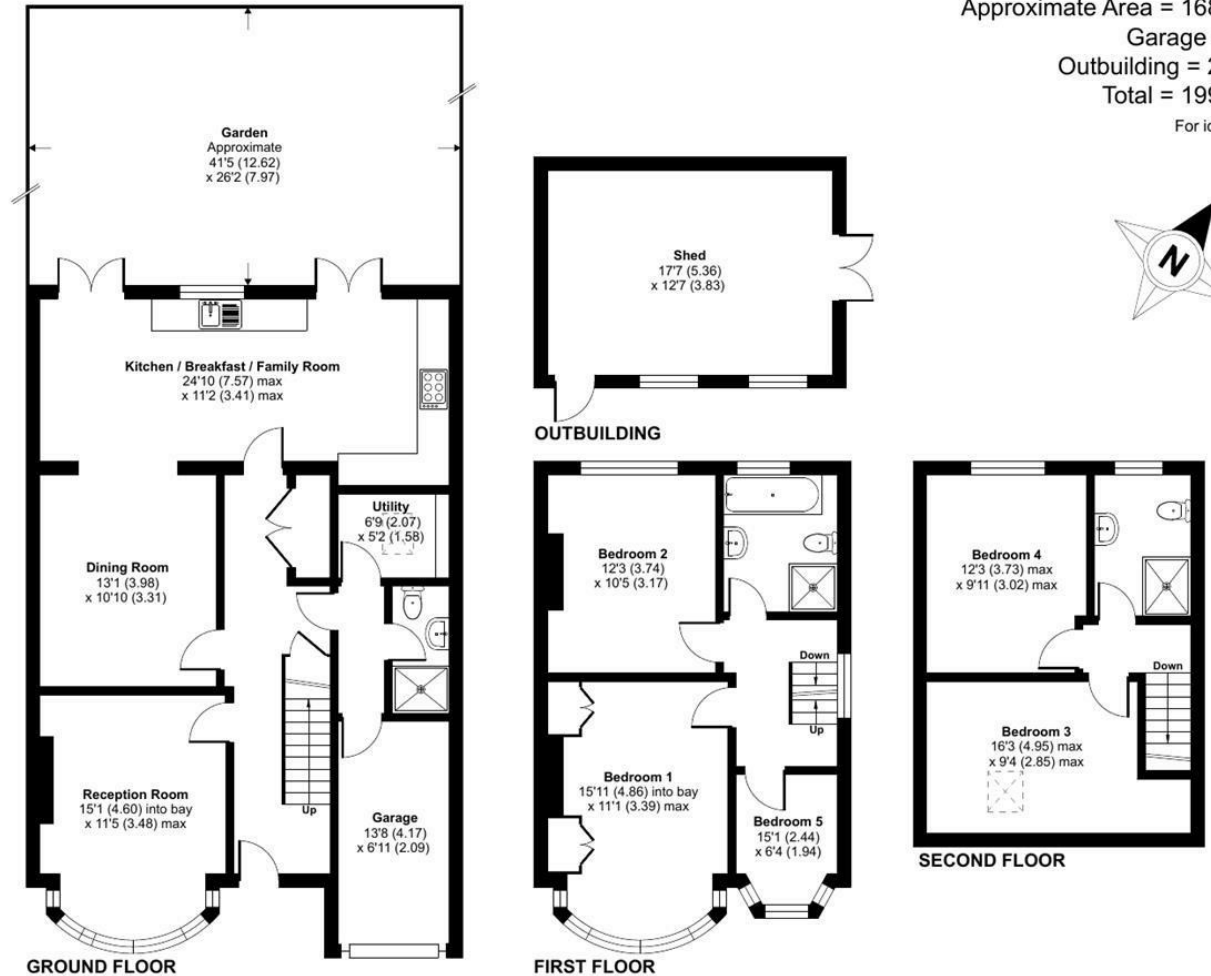
Approximate Area = 1686 sq ft / 156.6 sq m

Garage = 94 sq ft / 8.7 sq m

Outbuilding = 218 sq ft / 20.2 sq m

Total = 1998 sq ft / 185.5 sq m

For identification only - Not to scale



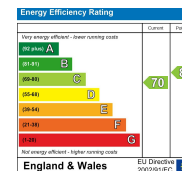
Floor plan produced in accordance with RICS Property Measurement 2nd Edition, Incorporating International Property Measurement Standards (IPMS2 Residential). Produced for Coopers. REF: 1327108. © nchecom 2025.

coopers
est 1986

coopers
est 1986

71 Victoria Road, Ruislip Manor,
Middlesex, HA4 9BH
ruislipmanor@coopersresidential.co.uk

CoopersResidential.co.uk



Important Notice: These particulars, whilst believed to be accurate are set out as a general outline only for guidance and do not constitute any part of an offer or contract. Intending purchasers should not rely on them as statements or representation of fact, but must satisfy themselves by inspection or otherwise has the authority to make or give any representation or warranty in respect of the property.