



Camden Hill Road, SE19 | Guide Price £425,000

020 8702 9333

crystalpalace@pedderproperty.com

pedder
We live local



In General

In Detail

**** Guide price £425,000 - £450,000 **** Situated on the desirable Camden Hill Road in the heart of Crystal Palace, this charming two-bedroom apartment offers a perfect blend of comfort and potential. Spanning an impressive 602 square feet, the property features a spacious reception room that boasts high ceilings and a fireplace, creating an inviting atmosphere for relaxation and entertaining.

The apartment includes two well-proportioned bedrooms, each equipped with fitted wardrobes, providing ample storage space while maintaining a tidy aesthetic. The layout presents a blank canvas, allowing you to personalise the space to suit your individual style and preferences.

Situated on a sought-after road, this property benefits from the vibrant community and excellent amenities that Crystal Palace has to offer. The property sits close to Gipsy Hill Station and within easy reach of excellent transport links. The bustling Crystal Palace Triangle is just a short stroll away, offering a fantastic mix of independent boutiques, acclaimed restaurants, stylish bars, and the popular Everyman Cinema. For those seeking outdoor space, Crystal Palace Park is also nearby.

This apartment is an ideal opportunity for first-time buyers or those looking to invest in a property with great potential. Don't miss the chance to make this delightful space your own in one of London's most sought-after areas.

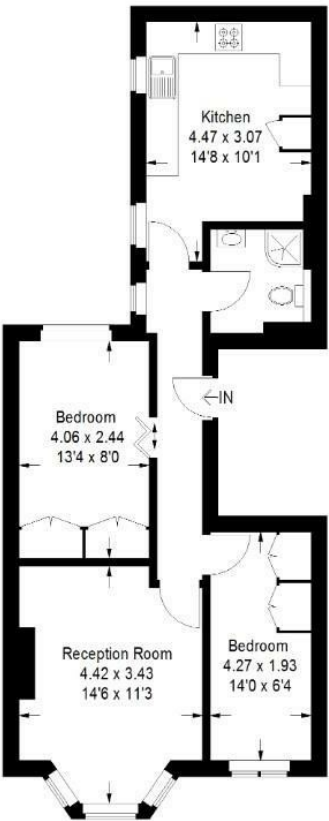
EPC: C | Council Tax Band: C | Lease: 103 Years remaining | SC: £2000pa | GR: £150pa | BI: Inc. in SC



Floorplan

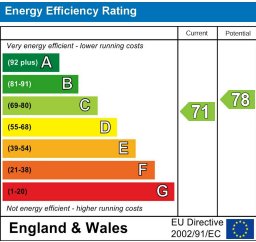
Camden Hill Road, SE19

Approximate Gross Internal Area
55.9 sq m / 602 sq ft



First Floor

Copyright www.pedderproperty.com © 2026
These plans are for representation purposes only
as defined by RICS - Code of Measuring Practice.
Not drawn to Scale. Windows and door openings
are approximate. Please check all dimensions,
shapes and compass bearings before making
any decisions reliant upon them.



Pedder Property Ltd trading as Pedder for themselves and for the vendor/landlord of this property whose agents they are, give notice that (1) these particulars do not constitute any part of an offer or contract, (2) all statements contained within these particulars are made without responsibility on the part of Pedder or the vendor/landlord, (3) whilst made in good faith, none of the statements contained within these particulars are to be relied upon as a statement of representation or fact, (4) any intending purchaser/tenant must satisfy him/herself by inspection or otherwise as to the correctness of each of the statements contained within these particulars, (5) the vendor/landlord does not make or give either Pedder or any person in their employment any authority to make or give representation or warranty whatsoever in relation to this property.