



Gladstone Court
Regency Street, SW1P

CHESTERTONS





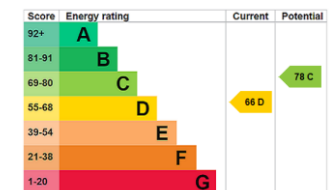
A beautifully presented two double bedroom apartment, set within Gladstone Court, an attractive gated red-brick mansion block in the heart of central London.

The property features a generous reception room, a separate fully fitted kitchen, and two bathrooms, including a master en-suite. Residents of Gladstone Court enjoy access to a communal gym and porter service. The apartment is offered to the market with no onward chain.

Regency Street is ideally positioned for the shops, cafés, and restaurants of Westminster. The location also benefits from excellent transport connections, including Victoria Station (Victoria, District and Circle lines, National Rail services and the Gatwick Express), Pimlico Station (Victoria line), and Westminster Station (Jubilee, District and Circle lines).

Beautifully presented two double bedroom, two bathroom apartment
 Located within Gladstone Court, a gated red-brick mansion block in central London
 Spacious reception room and separate fully fitted kitchen
 Residents' gym and porter service
 Prime Westminster Location with excellent transport links including Victoria, Pimlico, and Westminster
 No onward Chain

Asking Price £725,000

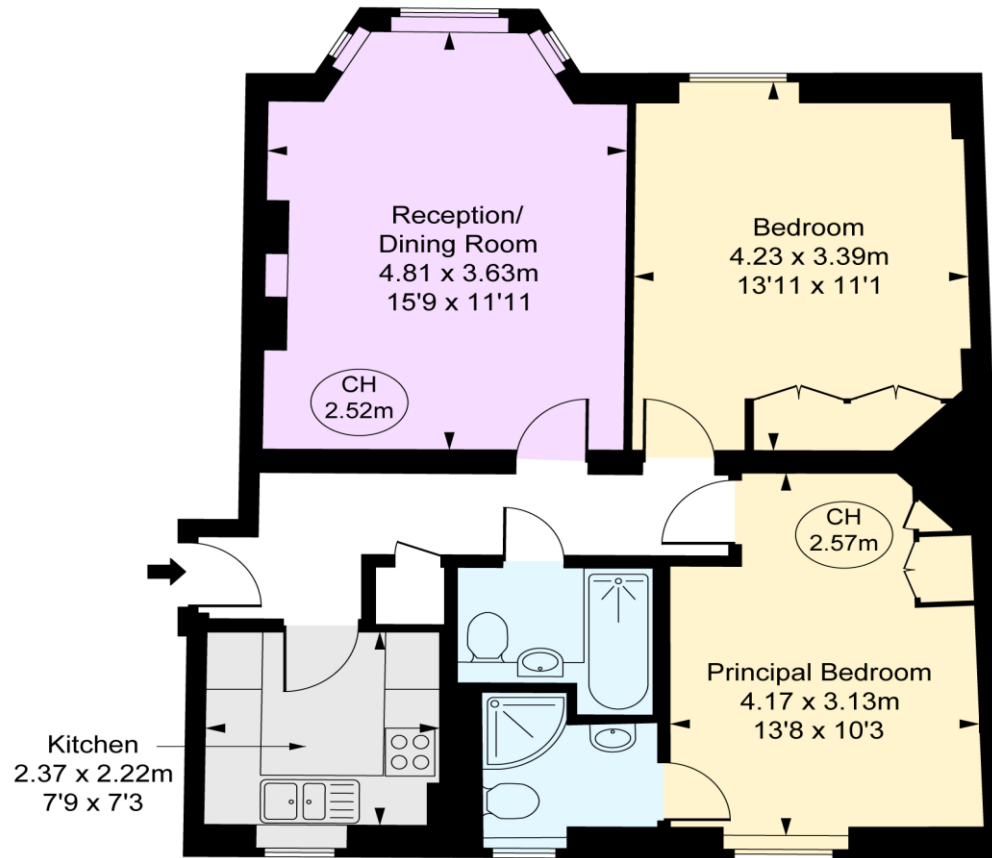
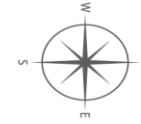


Tenure: Share of Freehold
Service Charge: £5,012 per Annum (£1,776 Reserve Fund)
Ground Rent: tbc
Local Authority: Westminster
Council Tax Band: F

Chestertons Westminster & Pimlico Sales

105 Wilton Road
 London
 SW1V 1DZ
 westminster@chestertons.co.uk
 020 3040 8201
 chestertons.co.uk

Gladstone Court,
Regency Street, SW1P
Approximate Gross Internal Area
63.78 sq m / 687 sq ft
(CH = Ceiling Heights)



Lower Ground Floor



This plan is not to a given scale. A detailed layout plan to scale for valuation is available on request. All measurements and areas are within 1% tolerance and have been prepared in accordance with industry standards as defined in the RICS Code of Measuring Practice
© Fulham Performance

Chesterton UK Services Limited trading as Chestertons for themselves and for the vendor of this property whose agents they are, give notice that (i) these particulars do not constitute any part of an offer or contract, (ii) all statements contained within these particulars are made without responsibility on the part of Chestertons or the vendor, (iii) whilst made in good faith, none of the statements contained within these particulars are to be relied upon as a statement or representation of fact, (iv) any intending purchasers must satisfy themselves by inspection or otherwise as to the correctness of each of the statements contained within these particulars, (v) the vendor does not make or give either Chestertons or any person in their employment any authority to make or give representation or warranty whatsoever in relation to this property. Wide angle lenses may be used. ©Copyright Chestertons | Chesterton UK Services Limited | Registered Office 40 Connaught Street, Hyde Park, London W2 2AB Registered Company Number 05334580.



This paper is
100% recyclable