



4 Horsley Gardens

Holywell, Whitley Bay NE25OTU

- Excellent Location
 - Living Room
 - Extended Kitchen
 - 2 Bedrooms
- Double Driveway/Garage
- Semi Detached House
 - Dining Room
 - Utility/Cloaks w.c.
 - Modern Shower Room
- Gardens to front & Rear

£269,950





This delightful home is set within a quiet cul-de-sac, ensuring a peaceful environment while still being close to local amenities, schools, and the charming pubs close to Holywell Dene. The property also features a double-length driveway leading to a garage.

This charming semi-detached house presents an excellent opportunity for first-time buyers. The property boasts a Entrance Porch, Living Room to the front with feature fire surround with stairs to first floor, Dining Room with space for a dining table & chairs, door to a convenient Utility/Cloaks w.c., through to a well-extended light & airy 19ft Kitchen with an excellent range of wall & floor units with contrasting work surfaces incorporating sink unit with mixer tap, breakfast bar area, space for cooker, integrated dishwasher, extractor, doors to rear opening to rear garden. To the first floor there are 2 Double Bedrooms and a modern Shower Room with good sized shower enclosure with mains shower, vanity washbasin and low level w.c.

Externally there is a double length driveway offering off street parking for 2 vehicles, leading to a garage and further storage area to the side. To the rear there is a fenced garden with lawn, gravel and decking area for garden furniture.

Entrance Porch

Living Room

15'8 x 12'6

Dining Room

8'8 x 7'8

Utility/Cloaks W.C.

7'5 x 3'3

Extended Kitchen

19'3 x 8'3

First Floor Landing

Bedroom One

12'6 x 8'11

Bedroom Two

12'5" x 7'6"

Shower Room

5'3 x 4'9

Externally

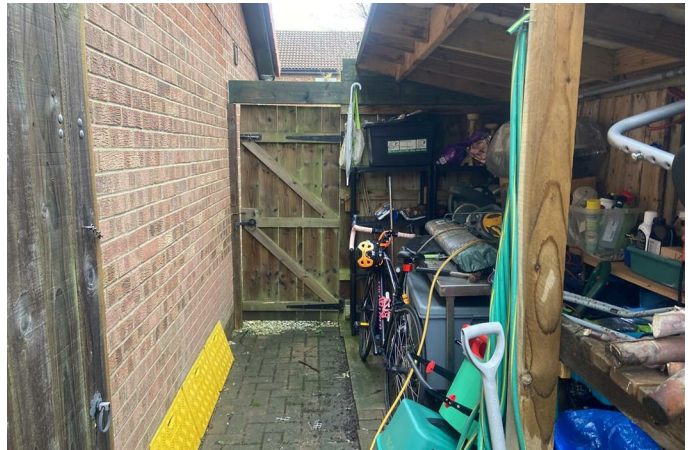
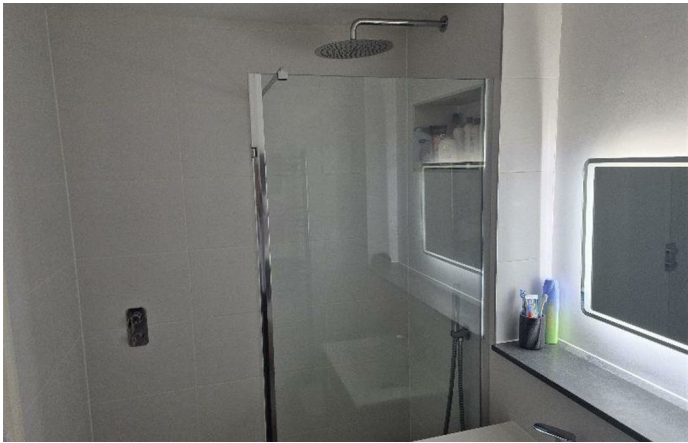
Disclaimer

ML Estates Ltd endeavour to maintain accurate descriptions of properties in Virtual Tours, Brochures, Floor Plans and descriptions, however, these are intended only as a guide and purchasers must satisfy themselves by personal inspection. All rooms have been measured with electronic laser and are approximate measurements only. None of the services to the above property have been tested by ourselves, and we cannot guarantee that the installations described in the details are in perfect working order.

ML Estates for themselves, the vendors or lessors, produce these brochures in good faith and are a guideline only. They do not constitute any part of a contract and are correct to the best of our knowledge at the time of going to press. Pictures may appear distorted due to enlargement and are not to be used to give an accurate reflection of size. All negotiations and payments are subject to contract.

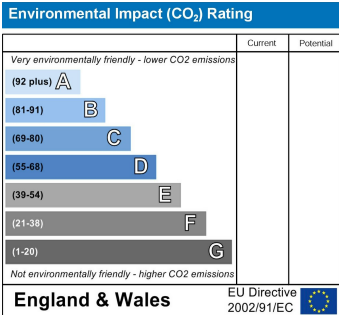
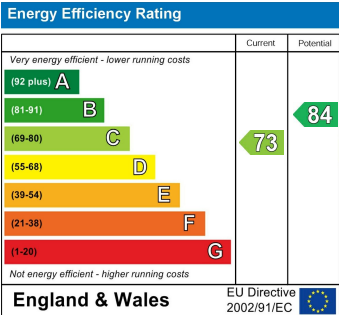
The Tenure of the property should be clarified by your legal representative prior to exchange of contracts.







Local Authority Northumberland county council
Council Tax Band C
EPC Rating C
Tenure Freehold



ML Estates Sales Office
27 Avenue Road, Seaton Delaval, Tyne
And Wear, NE25 0DT

Contact
0191 237 60 60
sd@mlestates.co.uk
www.mlestates.co.uk/

Agents Note: Whilst every care has been taken to prepare these particulars, they are for guidance purposes only. All measurements are approximate and for general guidance purposes only and whilst every care has been taken to ensure accuracy, they should not be relied upon and potential buyers/tenants are advised to recheck the measurements.