

Ribblesdale Road, SW16

£1,600 Per calendar month

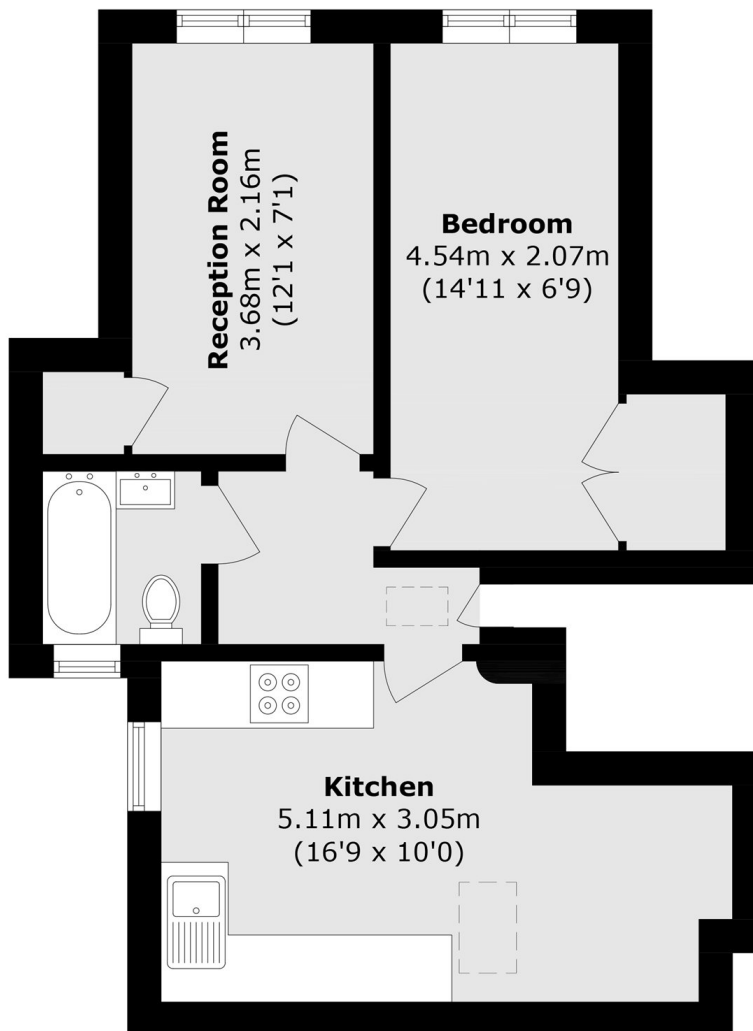
This one double bedroom flat has neutrally decorated throughout. The property benefits from a large eat in kitchen, separate living and tiled bathroom, making it perfect for a professional couple.

Ribblesdale Road located in the leafy Furzedown, is perfectly placed for a wide range of local amenities along Tooting High Road. Transport links can be found at Tooting Bec Underground (Northern Line) with the open spaces of Tooting Bec Common within easy reach.

Features

- Period Conversion
- One Double Bedroom
- Eat In Kitchen
- Separate Living Room
- Neutrally Decorated
- Quiet Location

Ribblesdale Road, London, SW16



Total area (approx.): 39.4 sq. m (424.1 sq. ft)