



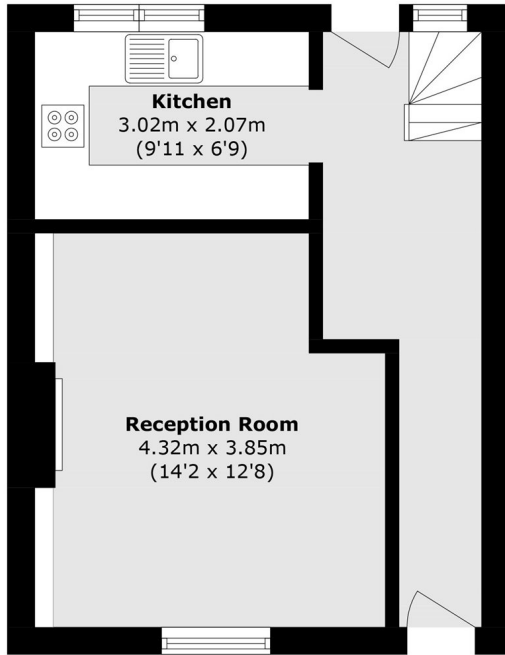
## **Greatdown Road, W7**

**£500,000**

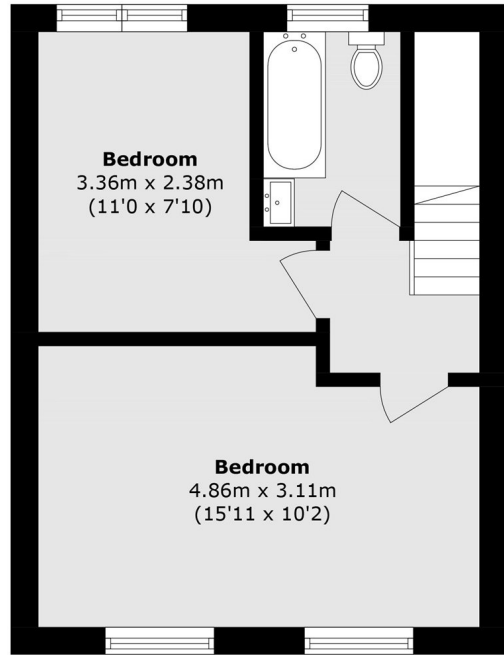
This immaculately presented two double bedroom house has been fully renovated throughout. The property benefits from ample built-in storage, solid oak flooring throughout and a private west facing garden. It also offers further potential to extend (STPP).

Ideally located within the Cuckoo Estate Conservation Area, with the shops and frequent bus links on Greenford Avenue within half a mile. Castle Bar Park Station (which provides convenient access to the Elizabeth line at West Ealing) is 0.3 mile away. A number of local primary and high schools, including the Ofsted outstanding Drayton Manor High School, are also close by.

- Two Bedrooms • Potential To Extend (STPP) • Freehold •
- Newly Refurbished • Close To Amenities • Conservation Area •



**Ground Floor**



**First Floor**

Total area (approx.): 64.1 sq. m (689.9 sq. ft)

Robertson Smith & Kempson Hanwell Sales  
69 Greenford Avenue,  
London, W7 1LL  
020 8566 2339  
[hanwellsales@robertsonsmithandkempson.co.uk](mailto:hanwellsales@robertsonsmithandkempson.co.uk)

Energy Rating: C. We aim to make our particulars both accurate and reliable. However they are not guaranteed; nor do they form part of an offer or contract. If you require clarification on any points then please contact us, especially if you're traveling some distance to view. Please note that appliances and heating systems have not been tested and therefore no warranties can be given as to their good working order.