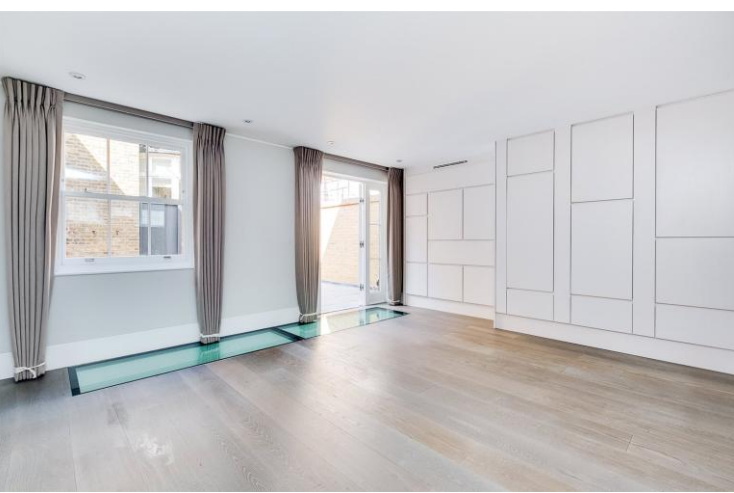




Cadogan Lane
Belgravia, SW1X

CHESTERTONS





An immaculately presented three-bedroom mews house which has been completely renovated whilst retaining the charm of the original façade. The house has been meticulously finished throughout and is situated in this highly sought-after location in the heart of Knightsbridge.

The property offers four floors of generous living space, comprising a ground floor formal reception room, a stunning kitchen/dining room and second reception, both reception spaces feature beautiful wood flooring. All three bedrooms benefit from en suite bathrooms and fitted wardrobes and are situated over the 1st and 2nd floors. Property presented unfurnished.

Cadogan Lane is a quiet and charming street which is tucked away behind Cadogan Place and Sloane Street. Close to Hyde Park, the property is ideally situated for all the restaurants, bars and world class shops that Knightsbridge and Sloane Street have to offer, including Harrods and Harvey Nichols.

- Immaculately presented mews house
- Moments from Hyde Park and Sloane Square
- Large private terrace
- Two receptions
- Guest WC

£10,000 pcm

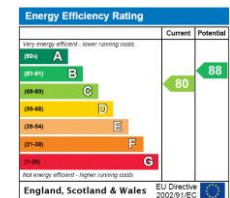
Additional tenant charges apply (fees apply to non-AST tenancies only)

Tenancy Agreement Fee: £300

References per Tenant/Guarantor: £60

Inventory check (approx. £100 – £250 inc. VAT)

chestertons.co.uk/property-to-rent/applicable-fees

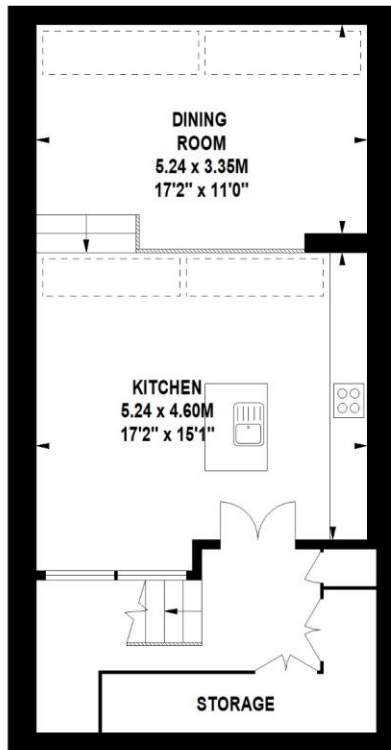


Minimum Term: 12 months
Deposit Required: 6 weeks
Local Authority: Kensington and Chelsea
Council Tax Band: H
EPC Rating: C
Unfurnished

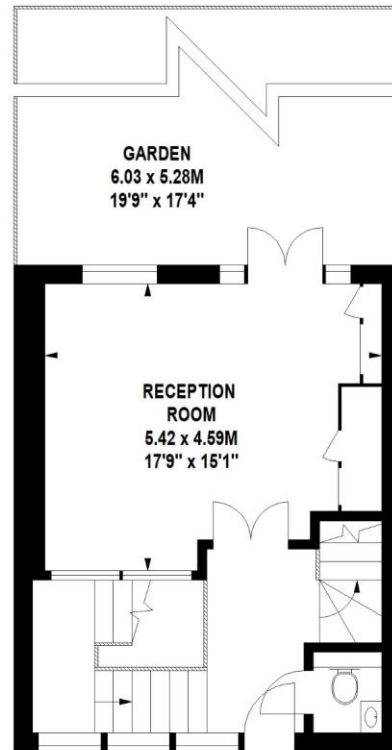
Chestertons Knightsbridge & Belgravia Lettings

31 Lowndes Street
 London
 SW1X 9HX

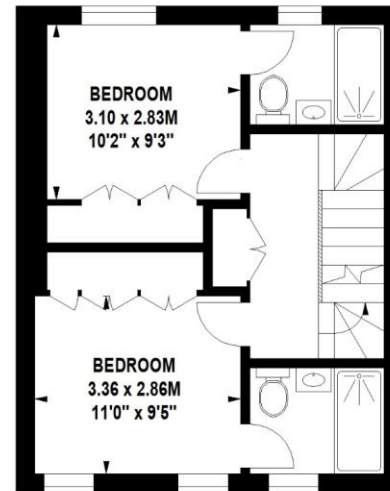
knightsbridgelettingsusers@chestertons.co.uk
 02072353530
chestertons.co.uk



Lower Ground Floor



Ground Floor



First Floor



Second Floor

Cadogan Lane, SW1X

Approximate gross internal area

170.92 sq m / 1840 sq ft

The floor plan is not to scale and measurements and areas shown are approximate and therefore should be used for illustrative purposes only. The plan has been prepared in accordance with the RICS code of Measuring Practice and whilst we have confidence in the information produced, it must not be relied on. If there is any aspect of particular importance, you should carry out or commission your own inspection of the property. Copyright of FeaturePRO.

