



White Bear Lane, TW3

£320,000

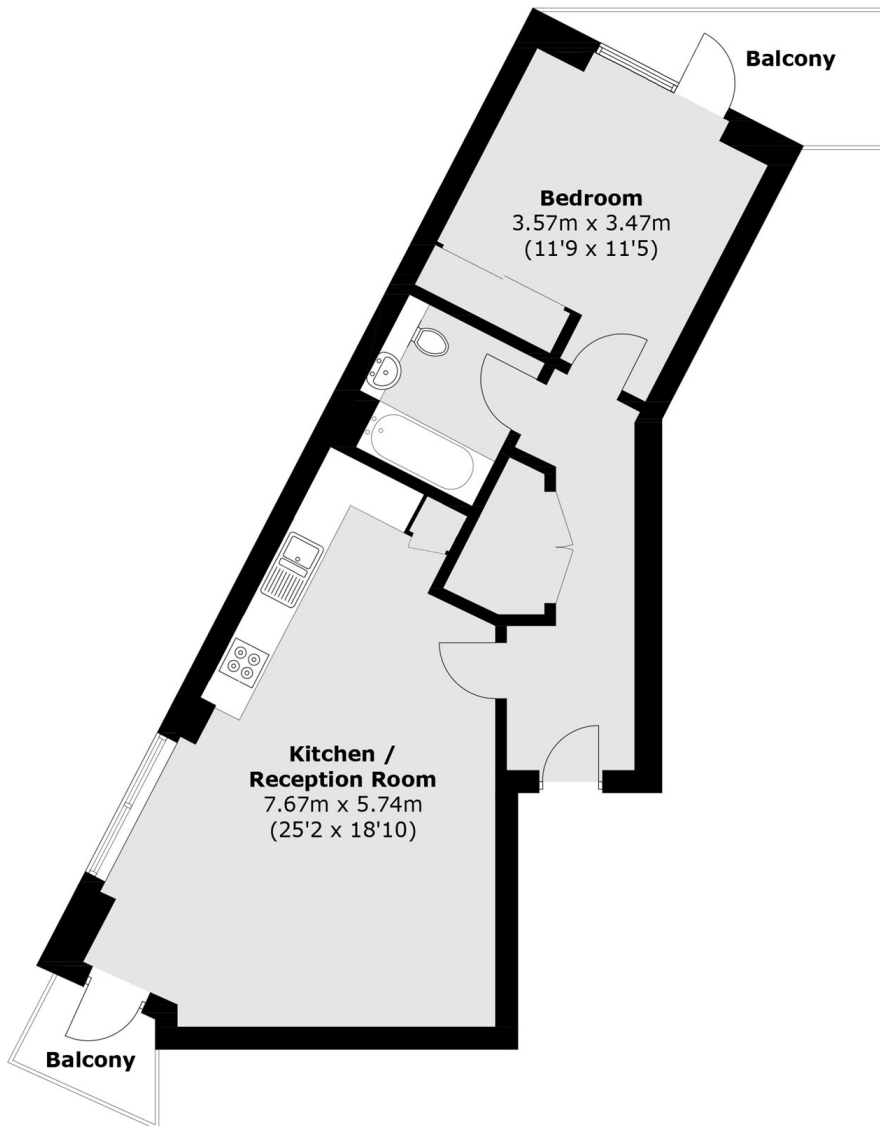
We are delighted to bring to the market this stunning corner plot penthouse located in a sought after and popular development. This immaculately presented and larger than average one double bedroom apartment spans almost 630 square feet of generous living space. We love the two private balconies which provide outside space from the bedroom and open plan kitchen/dining room, offering superb views across London. Further benefits include an energy efficient home (low running costs), a long lease and fully fitted kitchen with integrated appliances

Ironmonger Court is a sought after and centrally located development situated within minutes of Hounslow centre offering an array of shops and restaurants, Hounslow East tube station (Piccadilly line) is also within walking distance.

Features

- Penthouse Corner Plot Position
- One Double Bedroom
- Immaculate Condition
- Energy Efficient Home
- Larger than Average
- Two Balconies with Stunning Views

White Bear Lane, Hounslow, TW3



Total area (approx.): 58.5 sq. m (629.7 sq. ft)
Balcony area : 7.4 sq. m (79.6 sq. ft)