

# BELVOIR!

Property is personal



**£205,000**

**Moore Street**

Northampton, NN2 7HU

## PROPERTY SUMMARY

This is a nicely presented Victorian terraced property just off Kingsley Park Terrace which benefits from a number of original features and a sizeable rear garden, ideal for adding a garden room or similar.

It comprises a large open plan living room, modern kitchen with a dining area, two double bedrooms, and a modern bathroom. It's offered to the market in a condition where you could just move in - making it ideal for a first time buyer or an investor who wants a property that is 'rental ready'.

Please Note: This property is at the end of a treatment programme for Japanese Knotweed and will come with a warranty against future re-occurrence.

2



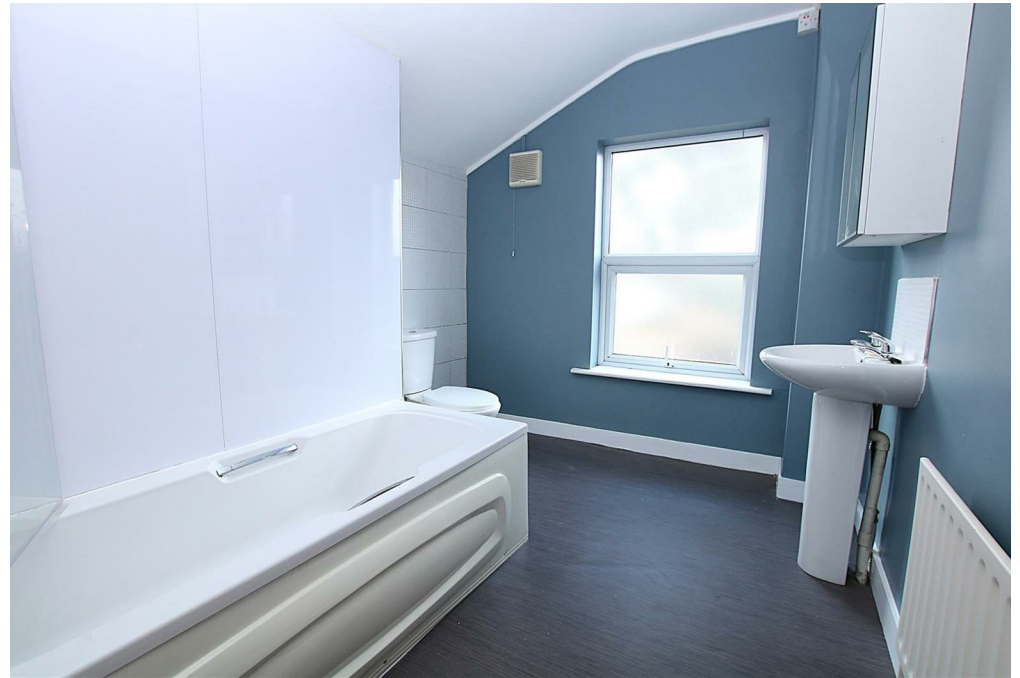
1



1

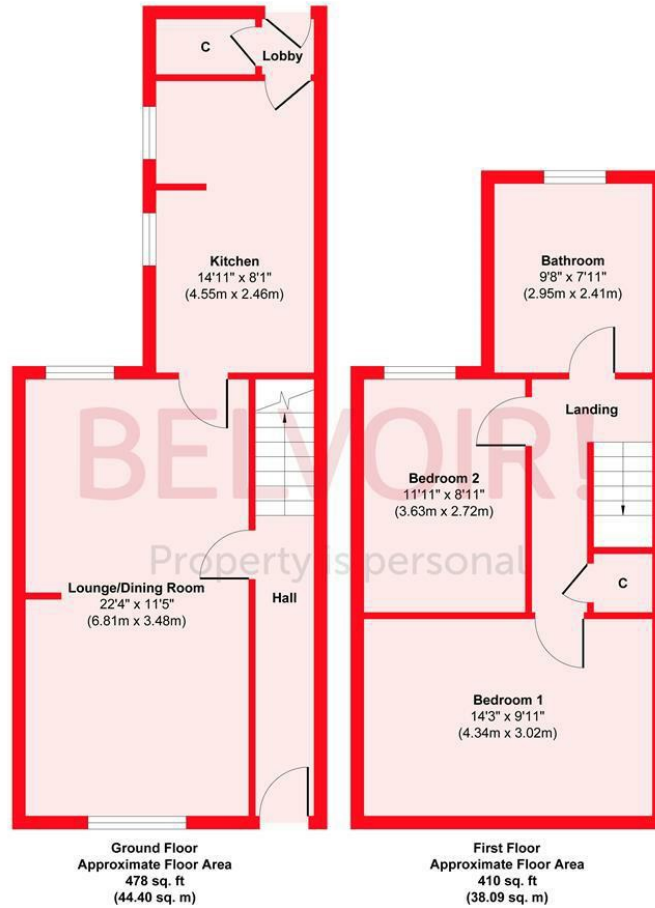








Moore Street, NN2



Approx. Gross Internal Floor Area 888 sq. ft / 82.49 sq. m  
Illustration for identification purposes only, measurements are approximate, not to scale.  
Produced by Elements Property

**LOCAL AUTHORITY**

Northampton

**TENURE**

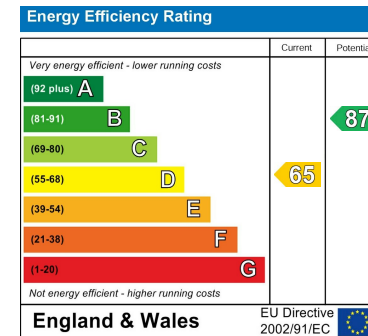
Freehold

**COUNCIL TAX BAND**

B

**VIEWINGS**

By prior appointment only



Agents Note: Whilst every care has been taken to prepare these particulars, they are for guidance purposes only. All measurements are approximate and are for general guidance purposes only and whilst every care has been taken to ensure their accuracy, they should not be relied upon and potential buyers/tenants are advised to recheck the measurements

# BELVOIR!

Property is personal

**OFFICE ADDRESS**

East Hunsbury Local Centre Butts  
Road  
Northampton  
Northamptonshire  
NN4 0UE

**OFFICE DETAILS**

01604 701701  
northampton@belvoir.co.uk  
www.belvoirnorthampton.com