



Hepworth Court

Anderson Square, N1

£430 per week
(£1,863.33 pcm)

Stunning one bedroom apartment located in this prestigious development which has a concierge service. Well-presented throughout the property is ideally located to Angel underground station. Parking by separate negotiations.



Hepworth Court

Anderson Square, N1

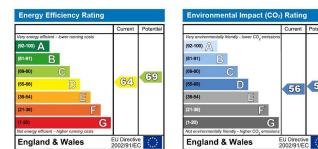
- Great Size Double Bedroom
- Fantastic Terrace
- 24 Hour Porter
- Secure Gated Development
- Close To Angel Tube And Upper Street



A stunning one double bedroom apartment on the ground floor of this centrally located development with 24 hour porter. This property features a fabulous terrace and offers a spacious reception room, fully integrated kitchen, bathroom with power shower and good-sized bedroom with fitted wardrobes. The property also benefits from wooden floors throughout. Set within a short distance to Angel Tube Station and very close to all the local amenities that Upper Street has to offer. Secure off street parking by separate negotiation.

Tenure: Long Let, Minimum tenancy
Furnished

Additional tenant charges apply
 Tenancy Agreement Fee: £222
 References per Tenant/Guarantor: £60
 Inventory check (approx. £100 – £250 inc. VAT)
[chestertons.com/property-to-rent/applicable-fees](https://www.chestertons.com/property-to-rent/applicable-fees)

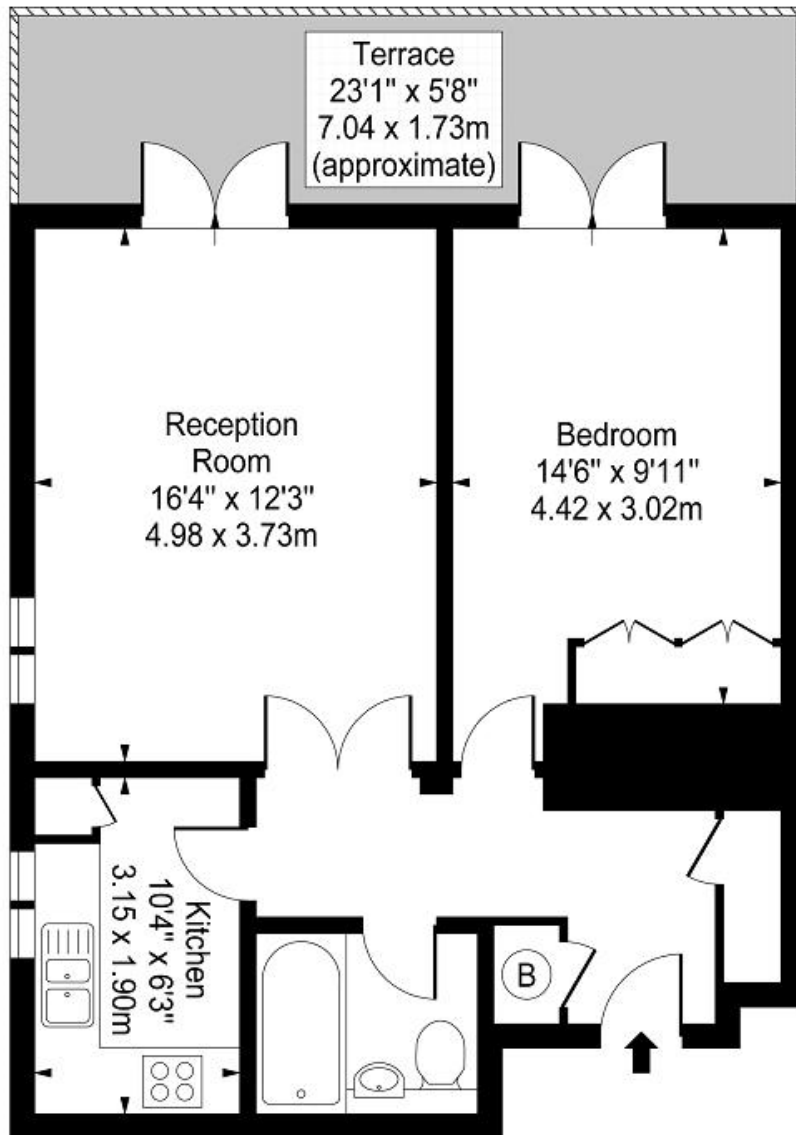


Chestertons Islington Lettings

327-329 Upper Street
 London
 N1 2XQ
lettings.islington@chestertons.com
 0207 226 4221
[chestertons.com](https://www.chestertons.com)



Hepworth Court, Anderson Square, N1 2TG



Raised Ground Floor

Approx Gross Internal Area **586 Sq Ft - 54.44 Sq M**

For Illustration Purposes Only - Not To Scale

Floor Plan by www.bpmmediagroup.com

Ref: No. P46655