



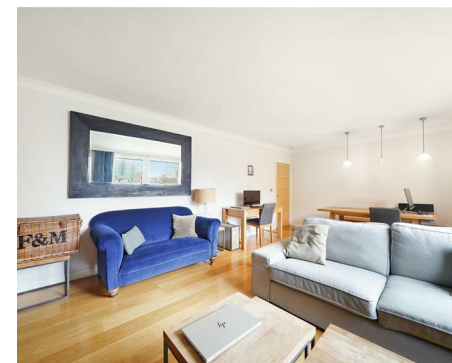
# ASHBURY

3 Bedrooms

Flat

Located in London

£1,050,000



[info@ashbury.london](mailto:info@ashbury.london)

0207 362 7888



# ASHBURY

Parkshot House 5 Kew Road

Richmond

TW9 2PR

0207 362 7888

[info@ashbury.london](mailto:info@ashbury.london)

A bright and spacious three bedroom lateral apartment arranged over the second floor of this desirable building with lift and porter.

This generously proportioned lateral apartment consists of a large west facing reception room, a separate modern fitted kitchen, three double bedrooms, one bathroom plus a guest cloakroom. The property further benefits from an abundance of natural light, a lift, porter, off street parking and a private garage.

Farley Court is a desirable building located near the green open spaces of Holland Park. The closest station is Kensington Olympia with Hammersmith and High Street Kensington stations also nearby.

## Energy Efficiency Rating: C

Agents Note: Whilst every care has been taken to prepare these particulars, they are for guidance purposes only. All measurements are approximate and are for general guidance purposes only and whilst every care has been taken to ensure their accuracy, they should not be relied upon and potential buyers/tenants are advised to recheck the measurements.