



Blomfield Road

Little Venice, W9

Asking Price £2,095,000

A charming and very stylish two-bedroom garden flat on the lower floor of a well maintained stucco fronted period conversion with its own private front patio. This elegant apartment has the perfect blend of period and contemporary features and has many highlights.

Starting with its own entrance you'll soon discover a glorious reception area which incorporates a wonderfully bright, open plan kitchen/dining area leading out to the private rear garden.

The property also boasts a garage that is accessed directly through the garden, a spacious master bedroom, study, second bedroom, family bathroom, WC and ample storage.

Blomfield Road is a superb location and is perfectly placed for the shops and amenities of Little Venice. It is also near Paddington (Heathrow Express).

CHESTERTONS



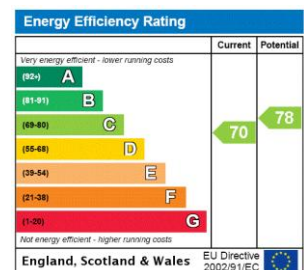
Blomfield Road

Little Venice, W9

- Garage
- Own entrance
- Garden
- Superb location
- Two receptions



Tenure: Share of Freehold
Service Charge: £1,865.52 pa
Ground Rent: Peppercorn
Local Authority: City of Westminster
Council Tax Band: E



Chestertons Little Venice Sales

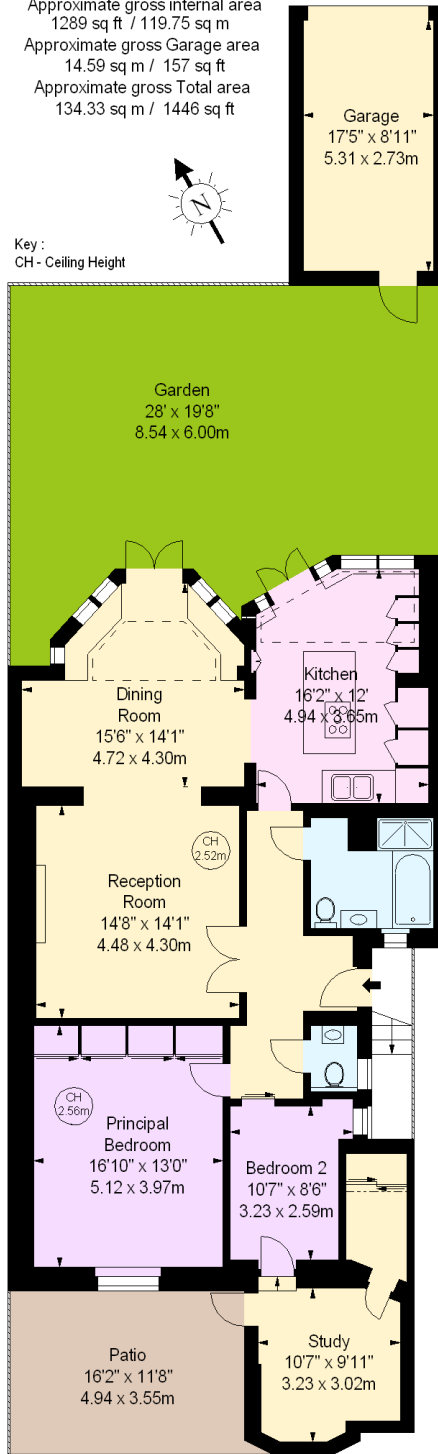
26 Clifton Road
 Maida Vale
 London
 W9 1SX
 littlevenice@chestertons.co.uk
 020 7286 4632
 chestertons.co.uk

Blomfield Road, W9

Approximate gross internal area
1289 sq ft / 119.75 sq m
Approximate gross Garage area
14.59 sq m / 157 sq ft
Approximate gross Total area
134.33 sq m / 1446 sq ft



Key :
CH - Ceiling Height



Lower Ground Floor

The floor plan is not to scale and measurements and areas shown are approximate and therefore should be used for illustrative purposes only. The plan has been prepared in accordance with the RICS code of Measuring Practice and whilst we have confidence in the information produced, it must not be relied on. If there is any aspect of particular importance, you should carry out or commission your own inspection of the property.
Copyright of FeaturePRO.

