



jordan fishwick

DIDSBURY
School Lane



School Lane, Didsbury, M20 6LB

Guide Price £235,000

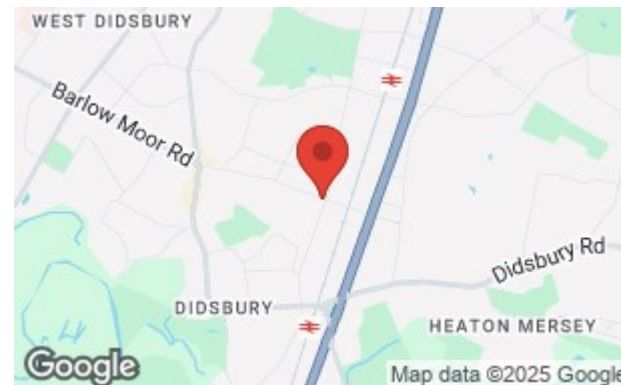


The Property

A LARGER STYLE, ground floor, TWO DOUBLE BEDROOM apartment forming part of a POPULAR PURPOSE BUILT DEVELOPMENT with secure GATED PARKING and convenient location which is within a short stroll of THE METROLINK & DIDSBURY VILLAGE. 760sq ft. In outline:- Communal entrance and stairs to all floors, L-shaped private entrance hall with generous storage space off, large living room extending over 18ft, fitted kitchen with a range of fitted units, main bedroom with ample space for freestanding furniture, second double bedroom and a generous bathroom with white suite. The property benefits from uPVC double glazing and electric heating and lies within well tended communal grounds with a gated residents car park to the rear. *NO ONWARD CHAIN*

Directions

M20 6LB



- Larger style ground floor apartment
- Two double bedrooms
- Living room over 18ft
- Fitted breakfast kitchen
- Generous bathroom
- uPVC double glazing
- Gated residents parking
- Tax band - D / EPC - C
- Close to Metrolink & Didsbury Village
- No onward chain

Postcode - M20 6LB

EPC Rating - C

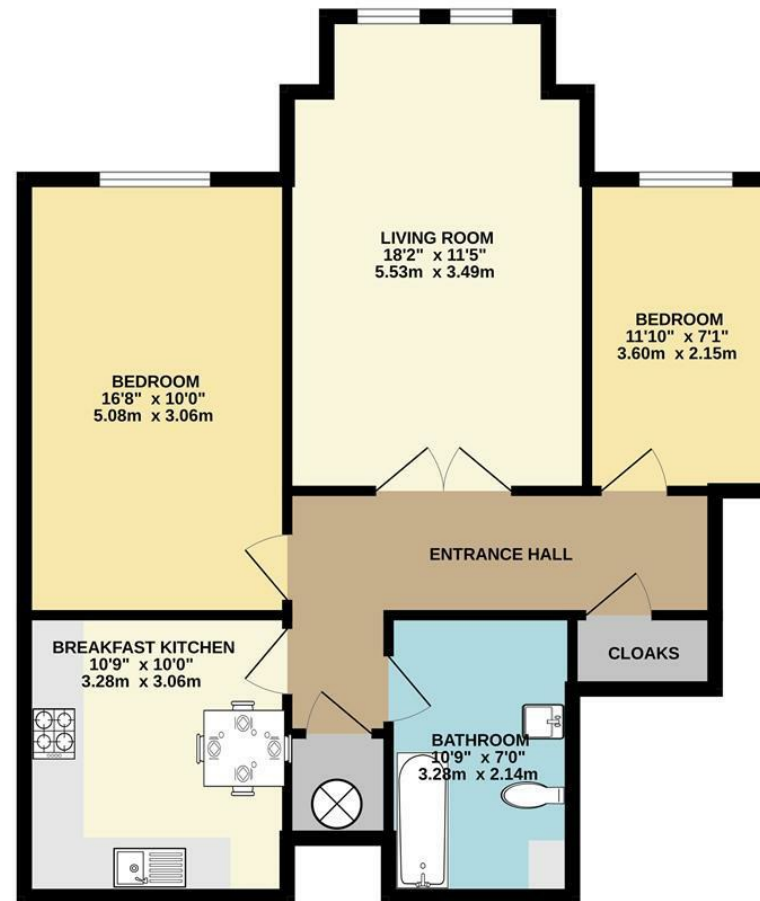
Floor Area - 760.00 sq ft

Local Authority - Manchester City Council

Council Tax - D



GROUND FLOOR
760 sq.ft. (70.6 sq.m.) approx.



TOTAL FLOOR AREA : 760 sq.ft. (70.6 sq.m.) approx.
Measurements are approximate. Not to scale. Illustrative purposes only
Made with Metropix ©2025



These particulars are believed to be accurate but they are not guaranteed and do not form a contract. Neither Jordan Fishwick nor the vendor or lessor accept any responsibility in respect of these particulars, which are not intended to be statements or representations of fact and any intending purchaser or lessee must satisfy himself by inspection or otherwise as to the correctness of each of the statements contained in these particulars. Any floorplans on this brochure are for illustrative purposes only and are not necessarily to scale.

Offices also at: Wilmslow, Macclesfield, Hale, Sale, Chorlton, Glossop, Manchester & Salford

757-759 Wilmslow Road, Didsbury Village, Manchester

0161 445 4480

didsbury@jordanfishwick.co.uk
www.jordanfishwick.co.uk