



## North Place, TW11

£959,950

A fabulous opportunity to purchase a modern town house situated in central Teddington, close to all the local amenities. This home offers four bedrooms and three bathrooms along with off street parking.

North Place is located off North Lane which is ideal for transport via Teddington Mainline Station. Bushy Park is close by as is the River Thames and you are in the heart of Broad Street for shopping.

### Features

- Central Location
- Off Street Parking
- Well Presented
- Spacious And Light
- Secluded Garden
- Four Bedrooms



## North Place, TW11

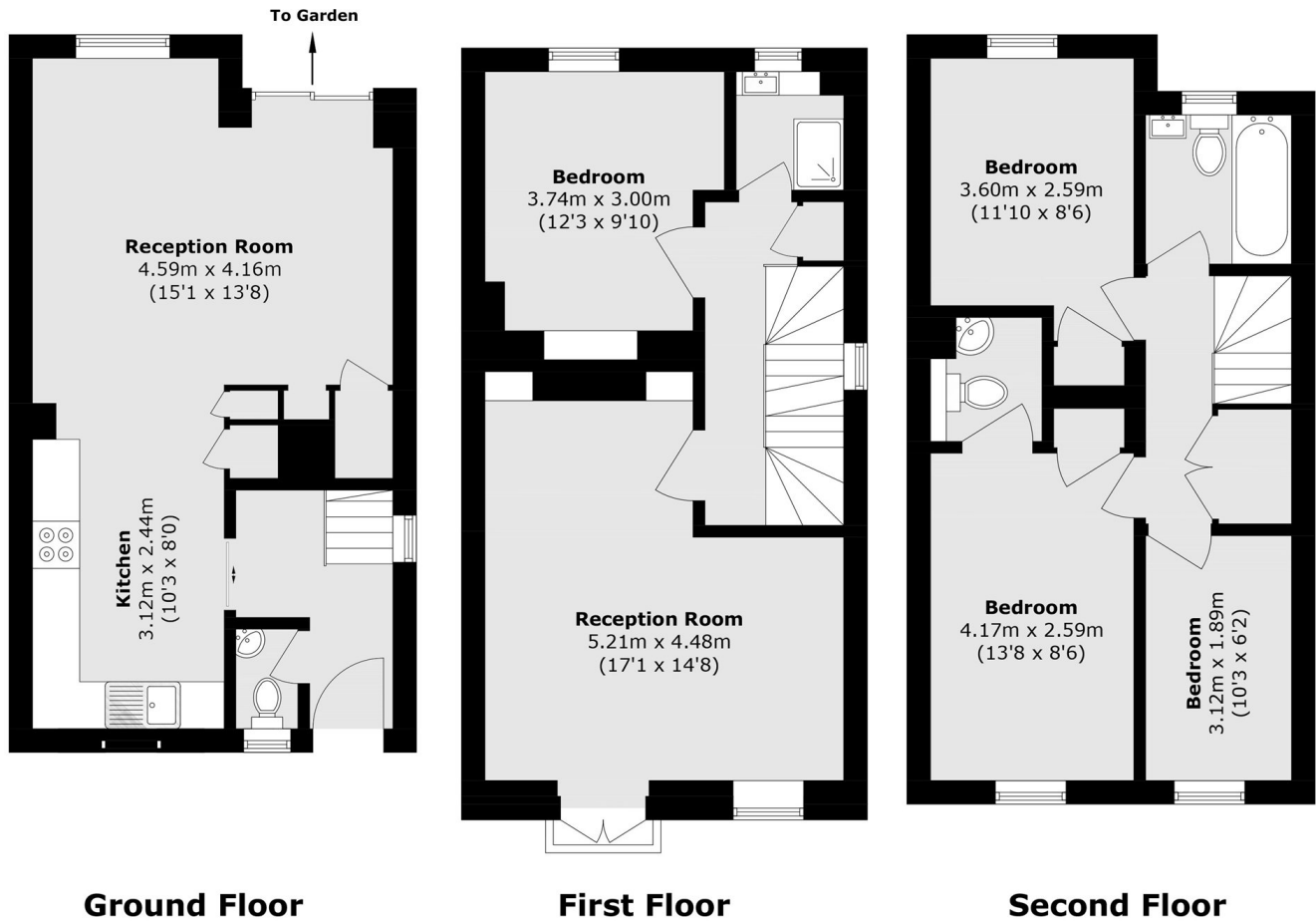
Enter through the hallway which leads you to the ground floor living space. The open plan kitchen/ breakfast room creates a sociable living area ideal for entertaining, with doors leading onto the garden. Completing the ground floor there is a cloakroom.

To the first floor there is a light and spacious reception room, a lovely space to relax and enjoy in the evening as well as a double bedroom. To the second floor there are three bedrooms, the master with an en suite shower room along with a family bathroom. There is fitted storage in three of the four bedrooms and additional storage in the hallway.

The secluded rear garden has a patio and lawn.



# North Place, Teddington, TW11



Total area (approx.): 119.6 sq. m (1287.3 sq. ft)