

C JAMES & CO - TOOTING

SALES AND LETTINGS SPECIALISTS



86a Gilbey Road, Tooting, SW17 0QG

£3,200 Per month

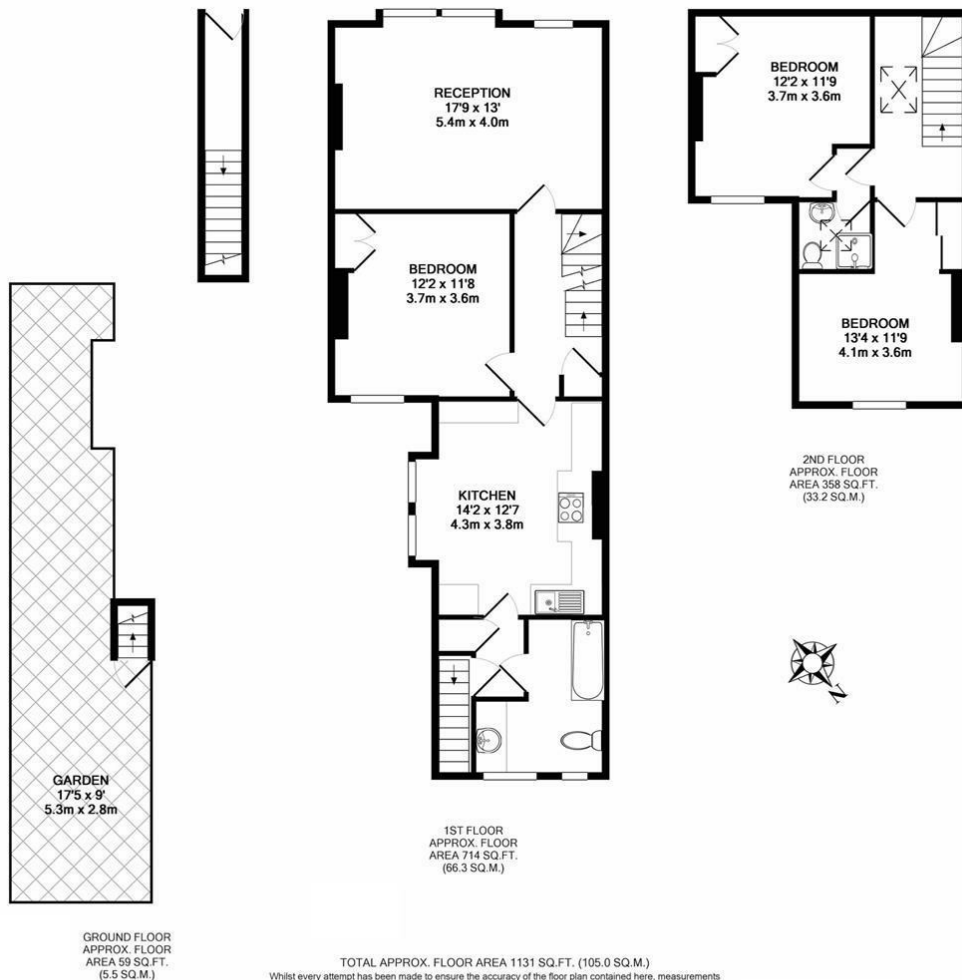
Welcome to this charming property located on Gilbey Road in the heart of Tooting. This delightful flat boasts a spacious interior with a split-level layout, offering a unique and versatile living space.

The property consists of a large reception room, perfect for relaxing or entertaining guests. The property features three large bedrooms, providing ample space for those working from home

With two bathrooms, mornings will be a breeze in this convenient abode. The outside space adds a touch of tranquility,

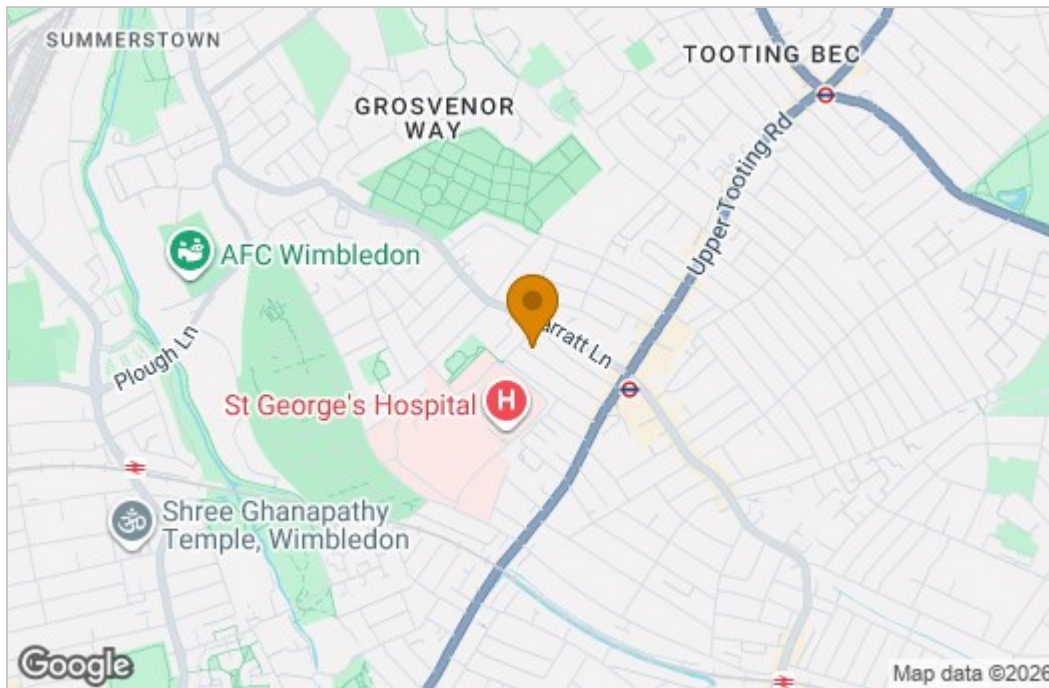
Situated close to shops and excellent transport links, this property offers the perfect blend of convenience and comfort. Whether you're looking to pop out for a quick shopping trip or commute to work easily, this location has you covered.

Floor Plan

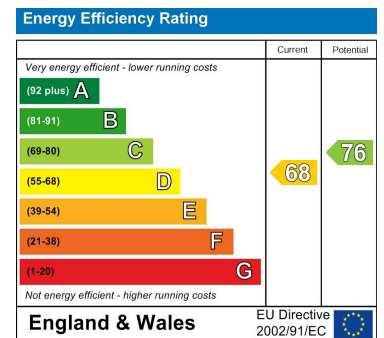


Whilst every attempt has been made to ensure the accuracy of the floor plan contained here, measurements of doors, windows, rooms and any other items are approximate and no responsibility is taken for any error, omission, or mis-statement. This plan is for illustrative purposes only and should be used as such by any prospective purchaser. The services, systems and appliances shown have not been tested and no guarantee as to their operability or efficiency can be given
Made with Metropix ©2018

Area Map



Energy Efficiency Graph



These particulars, whilst believed to be accurate are set out as a general outline only for guidance and do not constitute any part of an offer or contract. Intending purchasers should not rely on them as statements of representation of fact, but must satisfy themselves by inspection or otherwise as to their accuracy. No person in this firm's employment has the authority to make or give any representation or warranty in respect of the property.