



285 Newtown Road, Bedworth

Bedworth

£399,999



**SHELDON
BOSLEY
KNIGHT**

LAND AND
PROPERTY
PROFESSIONALS

285 Newtown Road

Bedworth, Bedworth

Detached Home With Huge Potential| Three Bedrooms| Good Sized Plot| Workshop & Stables| Garage & Off Road Parking| Easy Access to A444|Easy Access to Bedworth Town| Council Tax Band D. EPC Rating E
Council Tax band: D

Tenure: Freehold

EPC Energy Efficiency Rating: E

EPC Environmental Impact Rating: F

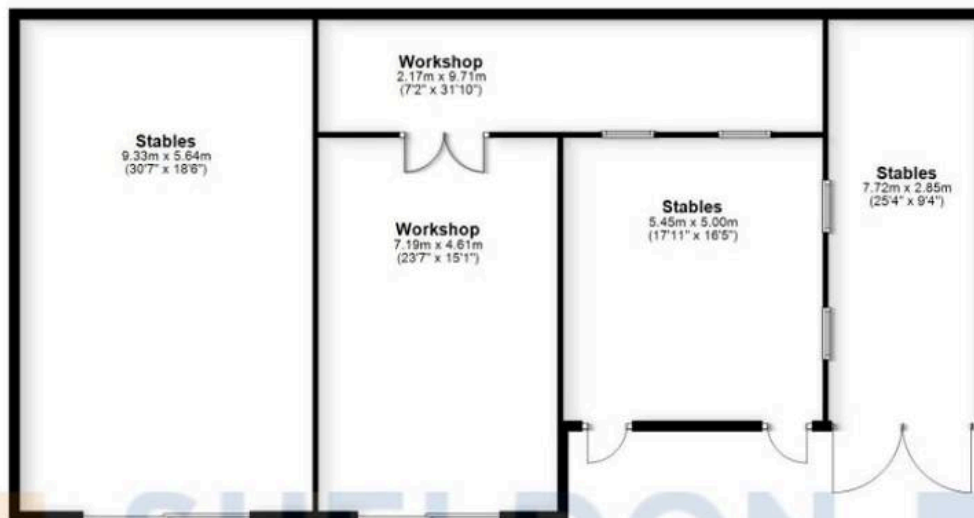
- Detached Home With Huge Potential
- Three Bedrooms
- Good Sized Plot
- Workshop & Stables
- Garage & Off Road Parking
- Easy Access to A444
- Easy Access to Bedworth Town
- Council Tax Band D & EPC Rating E





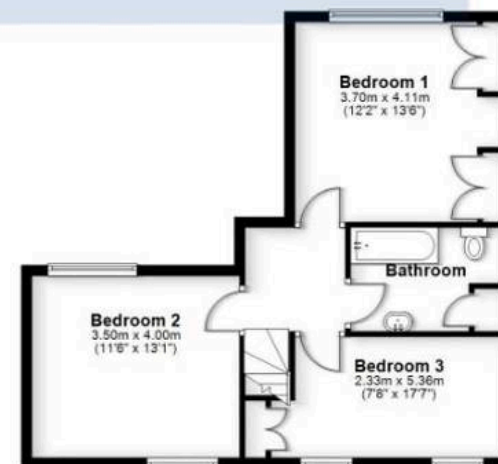
Ground Floor

Approx. 272.9 sq. metres (2937.4 sq. feet)



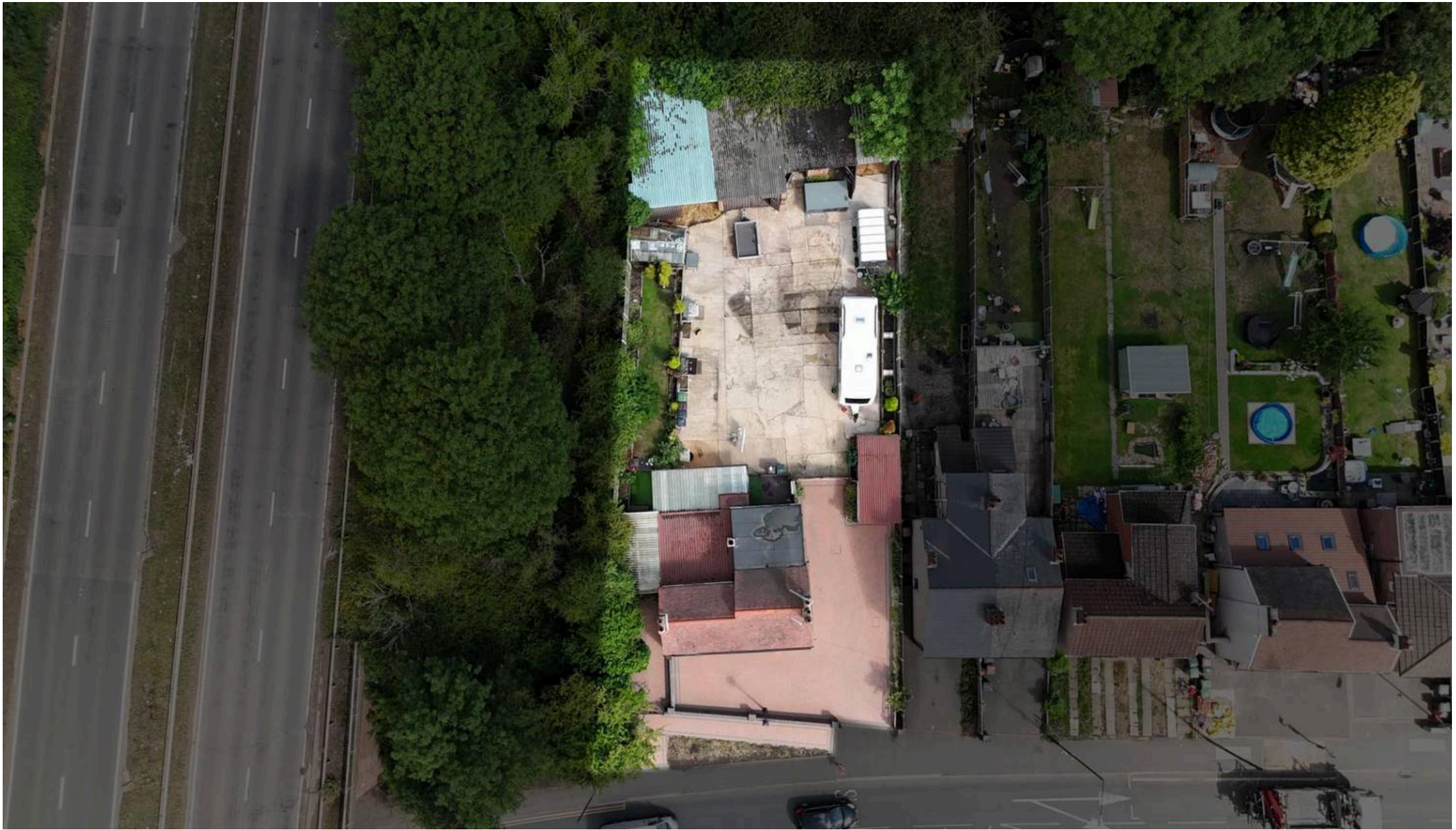
First Floor

Approx. 53.6 sq. metres (577.2 sq. feet)



Total area: approx. 326.5 sq. metres (3514.6 sq. feet)

All efforts have been made to ensure the measurements are accurate on this floor plan, however these are for guidance purposes only
Plan produced using PlanUp.



Sheldon Bosley Knight Nuneaton

Sheldon Bosley Knight, 39 Newdegate Street - CV11 4ER

02476374949 • nuneaton@sheldonbosleyknight.co.uk • www.sheldonbosleyknight.co.uk/