

Payton
Jewell
Caines



16 Queen Street, Pontrhydyfen – SA12 9TF
Port Talbot

£115,000



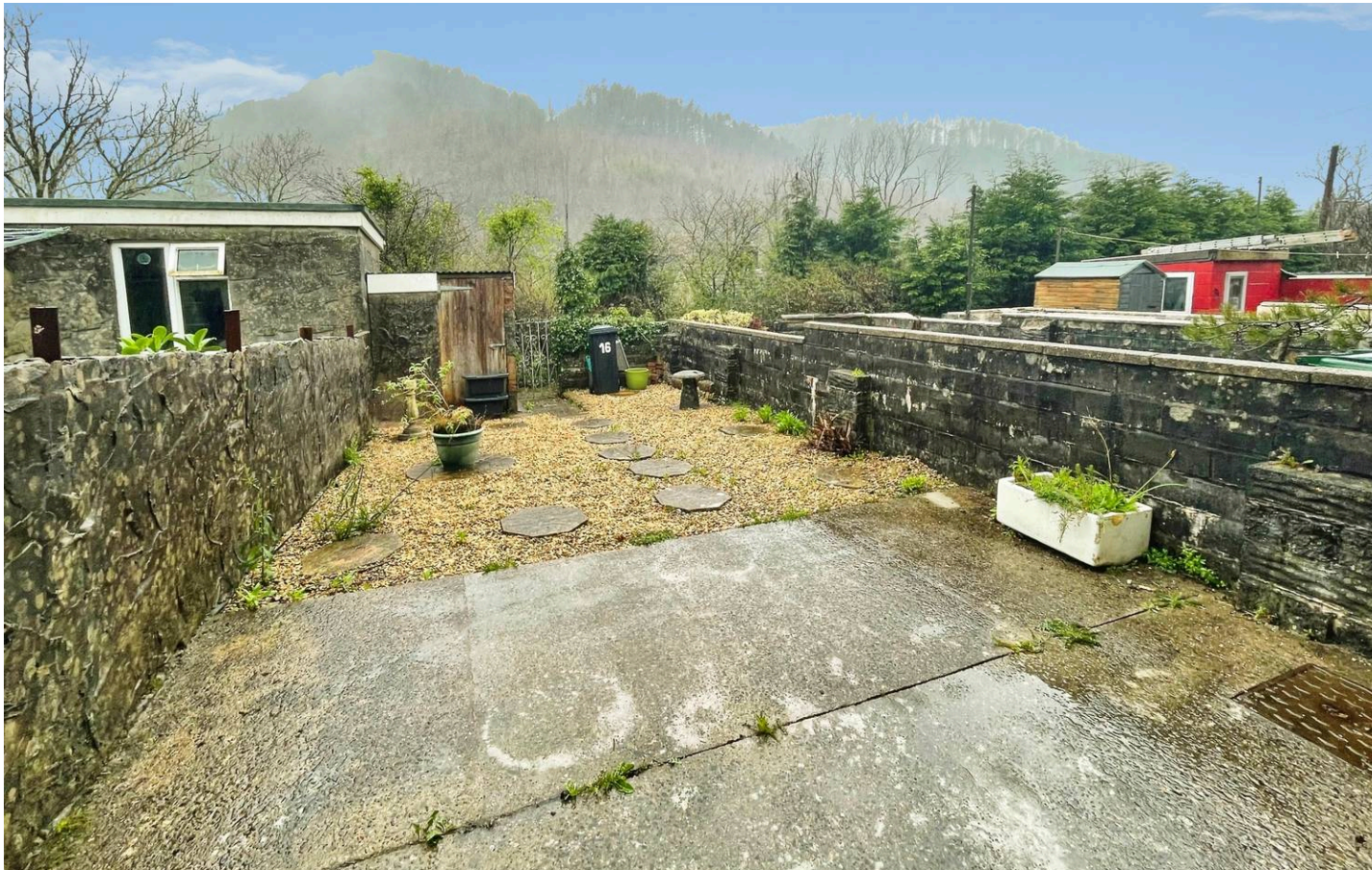
16 Queen Street

Pontrhydyfen, Port Talbot

A fantastic opportunity to buy a home with attractive scenic views in the village of Pontrhydyfen. The accommodation comprises of an entrance hall, spacious lounge diner, kitchen with fitted appliances and family bathroom. To the first floor are two double bedrooms. The basement consists of two reception rooms and access to the rear garden. Viewing comes highly recommended.

- 2 Bedroom Mid Terrace House
- Lounge/Diner
- Kitchen
- Shower Room
- Basement With Two Separate Rooms
- Rear Garden With Scenic Views Across Pontrhydyfen





Entrance

Via PVCu double glazed opaque window and door leading into the hallway finished with emulsioned walls, radiator and wooden flooring. Stairs leading to first floor.

Lounge/Diner

3.26m x 7.07m (10' 8" x 23' 2") narrowing to 2.40m. Emulsioned walls, double glazed window overlooking the front, two radiators, wooden flooring to the dining and carpet to the lounge area. Feature brick fireplace with tiled hearth. Window overlooking the kitchen. Arch leading through to the kitchen. Door leading to the basement.

Inner Hallway

Part emulsioned/part tiled walls. Door leading into shower room. Timber door leading to the kitchen.

Shower Room

1.72m x 1.80m (5' 8" x 5' 11") Extractor fan, radiator, double glazed opaque window to the rear, ceramic tiled walls and ceramic tiled flooring. Three piece suite comprising low level WC, pedestal wash hand basin and double shower with screen and electric shower attachment.

Kitchen

1.90m x 2.69m (6' 3" x 8' 10") PVCu double glazed window overlooking the rear, radiator, part emulsioned/ part tiled walls and vinyl flooring. A range of wall and base units with complementary work surfaces. Electric hob, electric oven and cooker hood. Stainless steel sink with single drainer.



Basement

3.14m x 3.97m (10' 4" x 13' 0") Accessed via the door from the lounge/diner. The basement is split into two rooms. The first room has emulsioned walls and a radiator. 3.08m x 2.67m (10' 1" x 8' 9") The second room has plumbing for automatic washing machine, radiator and double glazed PVCu opaque window overlooking the rear and double glazed patio doors to the rear.

First Floor Landing

Via stairs. Emulsioned walls and fitted carpet.

Bedroom 1

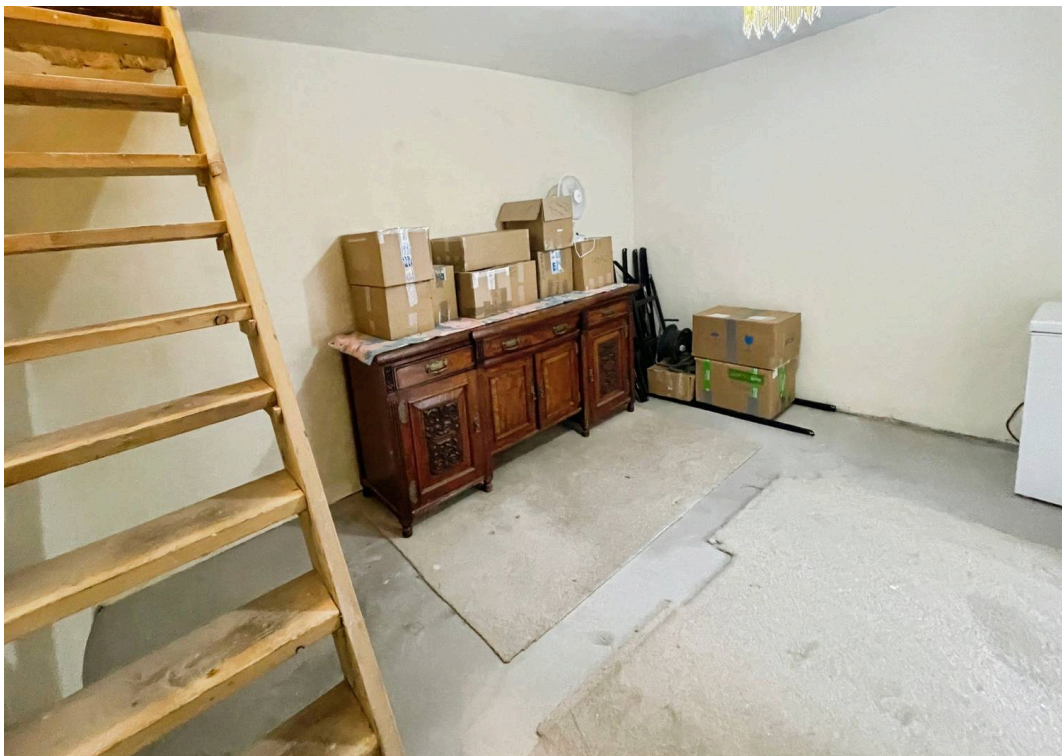
3.31m x 4.24m (10' 10" x 13' 11") Access to loft, PVCu double glazed window overlooking the rear of the property, storage cupboard, emulsioned walls and fitted carpet.

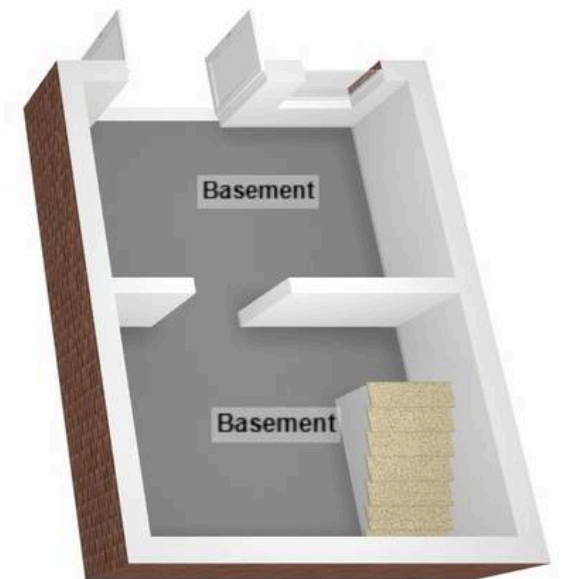
Bedroom 2

3.40m x 3.66m (11' 2" x 12' 0") Emulsioned walls, PVCu double glazed window overlooking the front of the property, radiator and fitted carpet.

Bedroom 2

The rear garden has a terrace with Cotswold stone chippings, hexagon shaped steps leading down to a brick built garden shed. Gate to the rear of the garden.





Payton Jewell Caines

Payton Jewell Caines, 53 Station Road – SA13 1NW

01639891268 • porttalbot@pjchomes.co.uk • pjchomes.co.uk/

These property details are provided as a general guide only. Whilst we aim for accuracy, measurements, photographs, floor plans, and descriptions should not be relied upon as statements of fact. Buyers should carry out their own checks regarding the property, services, and specifications. Fixtures and fittings are only included if specifically stated. Appliances and services have not been tested.