



Rockbourne Road, SE23

£1,300,000

**Dexters**



## Rockbourne Road, SE23

An imposing four bedroom semi-detached home spanning over 2,500 sq ft, featuring a stunning kitchen/diner extension, generous off-street parking, a versatile outbuilding, and a beautifully large garden

Step through the grand entrance hallway and you're instantly greeted by a wonderful sense of scale and character. To the front, an elegant bay fronted reception room offers the perfect formal living space, while the second reception provides a cosy retreat with views into the kitchen. At the heart of the home, the show-stopping open plan kitchen and dining area spans the full width of the house, with doors opening directly onto the beautifully landscaped rear garden with a versatile outbuilding. Further highlights include a generous cellar, spacious garage, cloakroom and sought after off-street parking. Upstairs, the sense of space continues with four well proportioned double bedrooms. The principal bedroom is bathed in natural light from its striking bay window. Two stylish bathrooms serve the floor, one featuring both a separate shower and bathtub. With further scope for development (STPP).

In the heart of Forest Hill, Rockbourne Road is a short walk from the station with fast links to London Bridge, Shoreditch and Canary Wharf. Nearby are independent cafés, shops, excellent schools and green spaces including Horniman Gardens and Blythe Hill Fields.

### Features

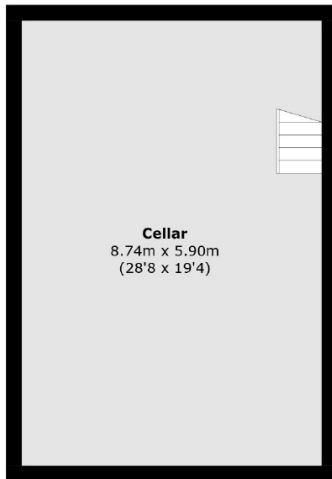
- Semi-Detached
- Four Bedrooms
- Two Bathrooms
- Outbuilding
- Off-Street Parking
- Garage



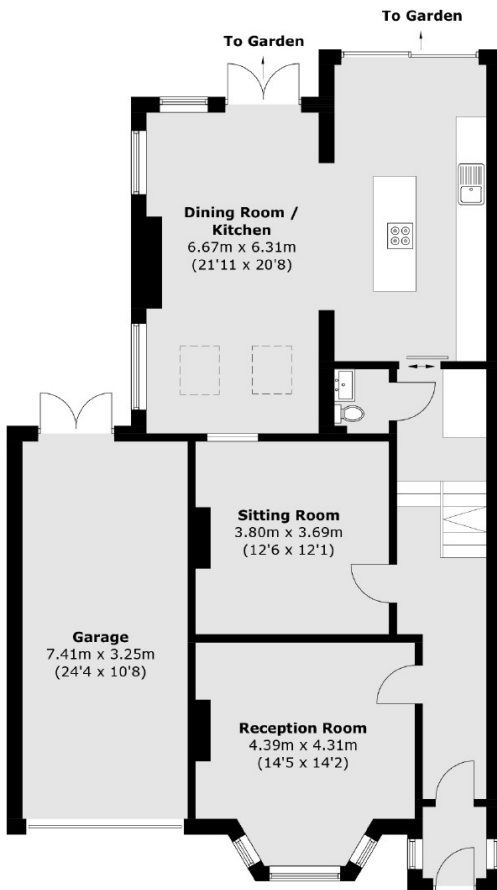




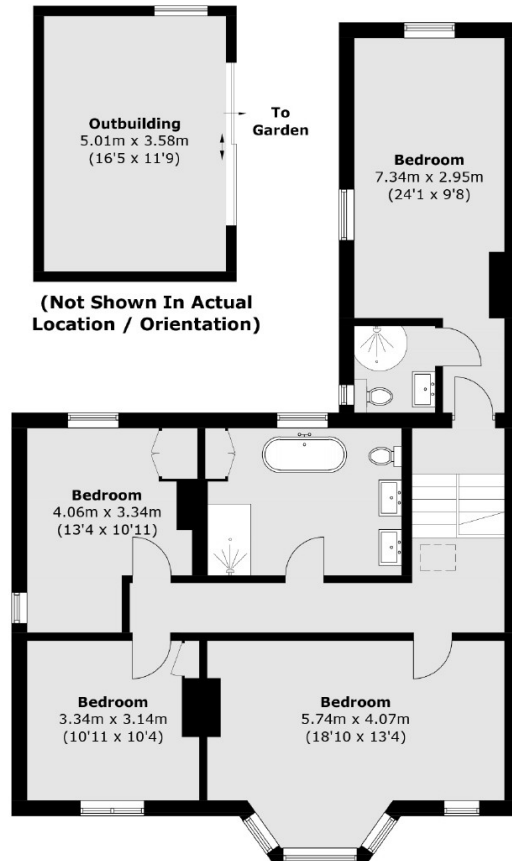
# Rockbourne Road, London, SE23



**Cellar**



**Ground Floor**



**First Floor**

Approx Internal Area: 236.9 sq. m (2549.9 sq. ft) (Including Cellar)

Garage: 24.3 sq. m (261.5 sq. ft)

Outbuilding: 17.9 sq. m (192.6 sq. ft)

Total: 279.1 sq. m (3004 sq. ft)