



1 Woodside Bungalows with 5 Acres of Land Wharf

Biddulph, ST8 6RU

Price £650,000



Carters are delighted to present to the market this charming detached bungalow, set within an expansive five-acre plot — a truly unique opportunity for those seeking a peaceful countryside retreat or an exciting development prospect.

The property itself offers 764 square feet of well-laid-out accommodation, comprising two generously sized bedrooms, a comfortable reception room, and a well-appointed bathroom. The layout is ideal for those seeking single-level living with the flexibility to update or extend (subject to planning permissions).

The substantial five-acre plot offers an abundance of outdoor space, perfect for keen gardeners, hobby farmers, or those simply looking to enjoy nature on their doorstep. Additionally, the property includes a garage and a versatile outhouse, providing valuable storage or workspace potential.

Nestled in a serene, rural setting, the bungalow combines idyllic surroundings with convenient access to local amenities, offering the best of both worlds — peaceful seclusion without isolation.

Whether you're searching for your forever home, a renovation project, or a development opportunity, this rare offering is sure to impress. Early viewing is highly recommended to fully appreciate the potential and setting of this exceptional property.

1 Woodside Bungalows with 5 Acres of Land Wharf

Biddulph, ST8 6RU

Price £650,000



Entrance Hallway

UPVC double glazed entrance door to the front elevation.

Radiator. Tiled flooring.

Living Room

12'11" x 11'11" (3.94m x 3.63m)

UPVC double glazed window to the front elevation.

Aga. Tiled flooring.

Kitchen

15'5" x 8'7" (4.70m x 2.62m)

UPVC double glazed entrance door to the side elevation. Wooden double glazed window to the rear elevation.

Fitted wall and base units with laminate work surfaces. Stainless steel sink with a mixer tap and a drainer. Space for a washing machine. Space for a fridge. Radiator. Tiled flooring.

Separate store room with tiled flooring.

Bedroom One

12' x 11'5" (3.66m x 3.48m)

UPVC double glazed window to the front elevation.

Radiator. Fireplace with a tiled surround.

Bedroom Two

12' x 11'5" (3.66m x 3.48m)

UPVC double glazed window to the rear elevation.

Radiator. Fireplace with a tiled surround.

Bathroom

6'5" x 8'10" (1.96m x 2.69m)

Wooden single glazed window to the

side elevation.

Panel bath with an electric shower over. Pedestal wash hand basin. Mid level w.c. Access to the loft. Partially tiled walls. Tiled flooring.

Externally - Land

5 Acres of Versatile Land – Woodland & Flat Lawn Area – Development Potential (STPP)

An exceptional opportunity to acquire approximately 5 acres of land comprising a blend of mature woodland and a flat, open lawned area, offering both natural beauty and practical use.

The site presents potential for development, subject to obtaining the necessary planning permissions (STPP), making it ideal for those looking to invest, build, or create a unique private retreat.

Key Features:

Approx. 5 acres of mixed-use land

Scenic woodland offering privacy and biodiversity

Expansive flat lawn suitable for a variety of uses

Potential for residential or other development (STPP)

Peaceful location with good access (details dependent on location)

Whether you're seeking land for leisure, conservation, or a future project, this plot offers scope, seclusion, and promise.

Garage

9'9" x 18'8" (2.97m x 5.69m)

Wooden entrance door to the side elevation. Wooden doors to the front elevation. Two wooden single glazed windows to the side elevation.

Outhouse

Outhouse attached to the garage with a wooden single glazed window to the rear elevation.

Additional Information

Freehold. Council Tax Band C.

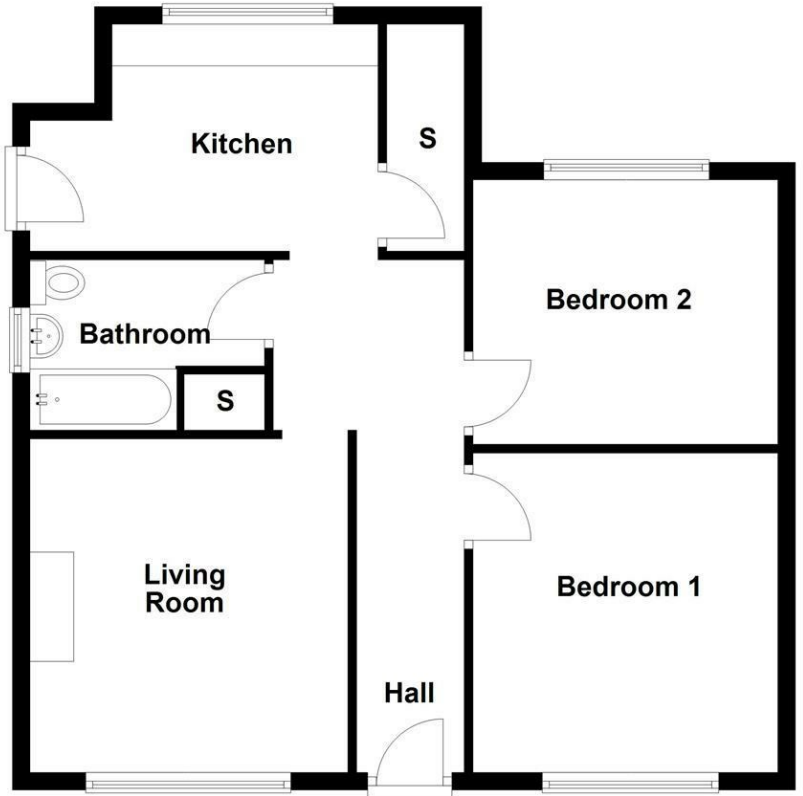
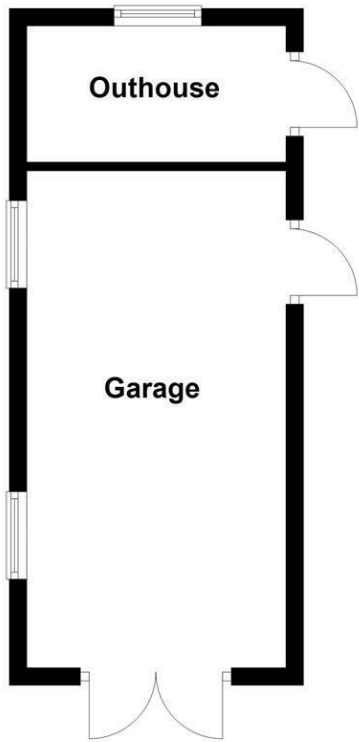
TOTAL FLOOR AREA: 764 SQ FT / 71 SQ M.

Disclaimer

Although we try to ensure accuracy, these details are set out for guidance purposes only and do not form part of a contract or offer. Please note that some photographs have been taken with a wide-angle lens. A final inspection prior to exchange of contracts is recommended. No person in the employment of Carters Estate Agents Ltd has any authority to make any representation or warranty in relation to this property. We obtain some of the property information from land registry as part of our instruction and as we are not legal advisers we can only pass on the information and not comment or advise on any legal aspect of the property. You should take advice from a suitably authorised licensed conveyancer or solicitor in this respect.

Tel: 01782 470391

Ground Floor



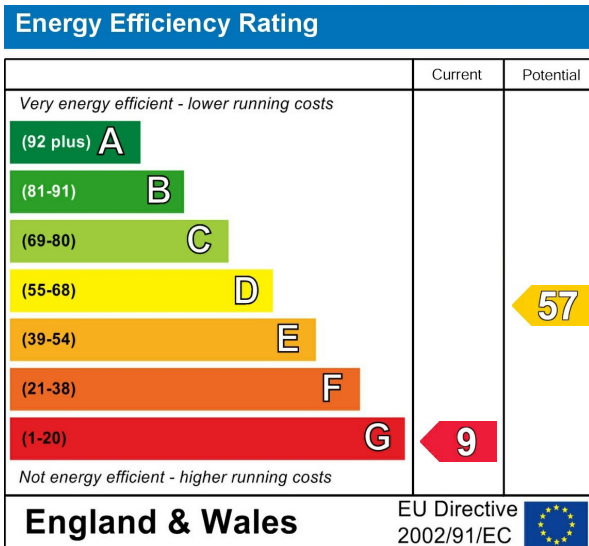
Road Map



Hybrid Map



Energy Efficiency Graph



Viewing

Please contact our Carters Estate Agents Office on 01782 470391 if you wish to arrange a viewing appointment for this property or require further information.

These particulars, whilst believed to be accurate are set out as a general outline only for guidance and do not constitute any part of an offer or contract. Intending purchasers should not rely on them as statements of representation of fact, but must satisfy themselves by inspection or otherwise as to their accuracy. No person in this firm's employment has the authority to make or give any representation or warranty in respect of the property.

101 High Street Biddulph Stoke on Trent Staffs ST8 6AB
01782 470391
www.carters-estateagents.co.uk