



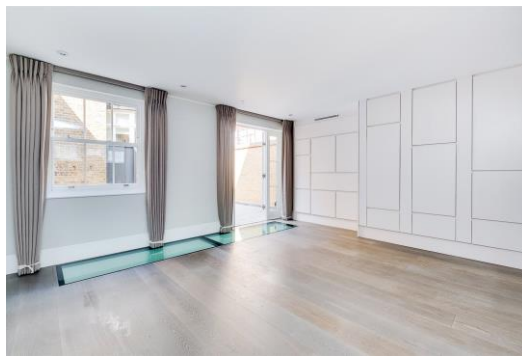
Cadogan Lane

London, SW1X

£1,795 per week
(£7,778.33 pcm)

An immaculately presented mews house which has been completely renovated whilst retaining the charm of the original façade. The house has been meticulously finished throughout and benefits from a private terrace, two receptions and wood flooring.

CHESTERTONS



Cadogan Lane

London, SW1X

- Immaculately presented mews house
- Moments from Hyde Park and Sloane Square
- Large private terrace
- Two receptions
- Guest WC



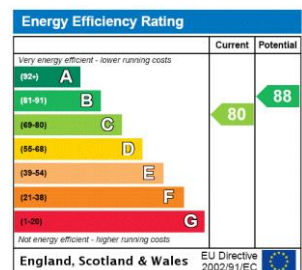
An immaculately presented three bedroom mews house which has been completely renovated whilst retaining the charm of the original façade. The house has been meticulously finished throughout and is situated in this highly sought-after location in the heart of Knightsbridge.

The property offers four floors of generous living space, comprising a ground floor formal reception room, a stunning kitchen/dining room and second reception, both reception spaces feature beautiful wood flooring. All three bedrooms benefit from en suite bathrooms and fitted wardrobes and are situated over the 1st and 2nd floors. Property presented unfurnished.

Cadogan Lane is a quiet and charming street which is tucked away behind Cadogan Place and Sloane Street. Close to Hyde Park, the property is ideally situated for all the restaurants, bars and world class shops that Knightsbridge and Sloane Street have to offer, including Harrods and Harvey Nichols.

Tenure: To be advised
Unfurnished

Additional tenant charges apply (fees apply to non-AST tenancies only)
 Tenancy Agreement Fee: £300
 References per Tenant/Guarantor: £60
 Inventory check (approx. £100 – £250 inc. VAT)
[chestertons.com/property-to-rent/applicable-fees](https://www.chestertons.com/property-to-rent/applicable-fees)

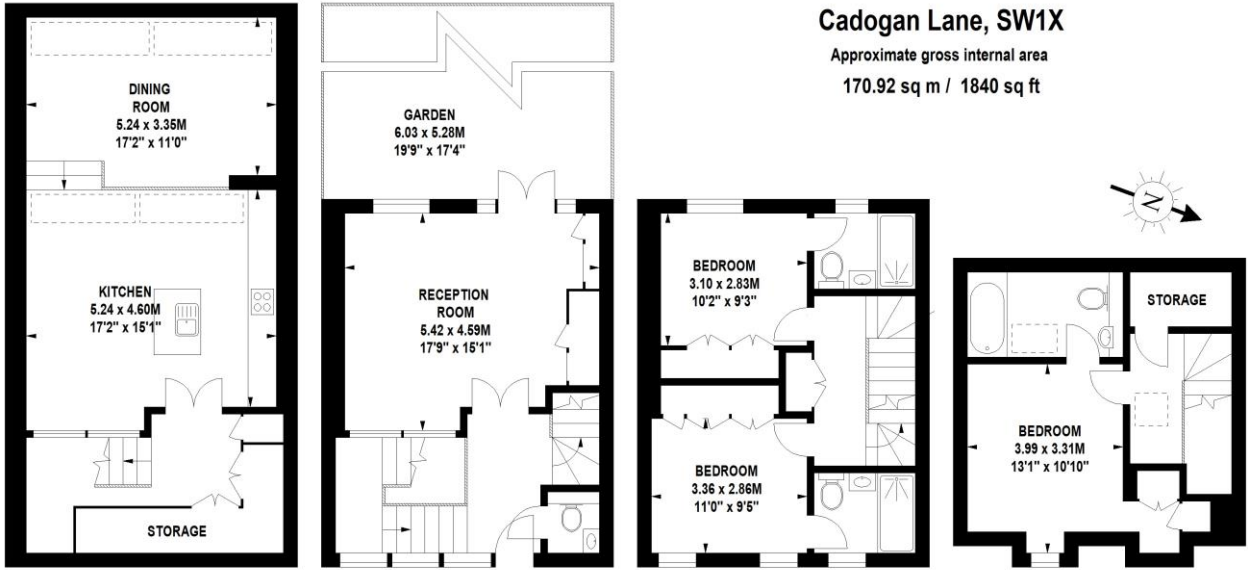


Chestertons Knightsbridge & Belgravia Lettings

31 Lowndes Street
 London
 SW1X 9HX
lettings.knightsbridge@chestertons.com
 02072353530
[chestertons.com](https://www.chestertons.com)

Cadogan Lane, SW1X

Approximate gross internal area
170.92 sq m / 1840 sq ft



Lower Ground Floor

Ground Floor

First Floor

Second Floor

The floor plan is not to scale and measurements and areas shown are approximate and therefore should be used for illustrative purposes only. The plan has been prepared in accordance with the RICS code of Measuring Practice and whilst we have confidence in the information produced, it must not be relied on. If there is any aspect of particular importance, you should carry out or commission your own inspection of the property.
Copyright of FeaturePRO.