



**ARMFORD
ESTATES**

PER MONTH

£2,250 Per Month

Pleasant Place

London, N1 2BZ

PROPERTY SUMMARY

NEWLY REFURBISHED THROUGHOUT - One bedroom apartment in a highly sought after location - First Floor - New Kitchen - New Flooring - Newly Painted - Unfurnished - Available Now - Council Tax Band C - EPC Band C

1

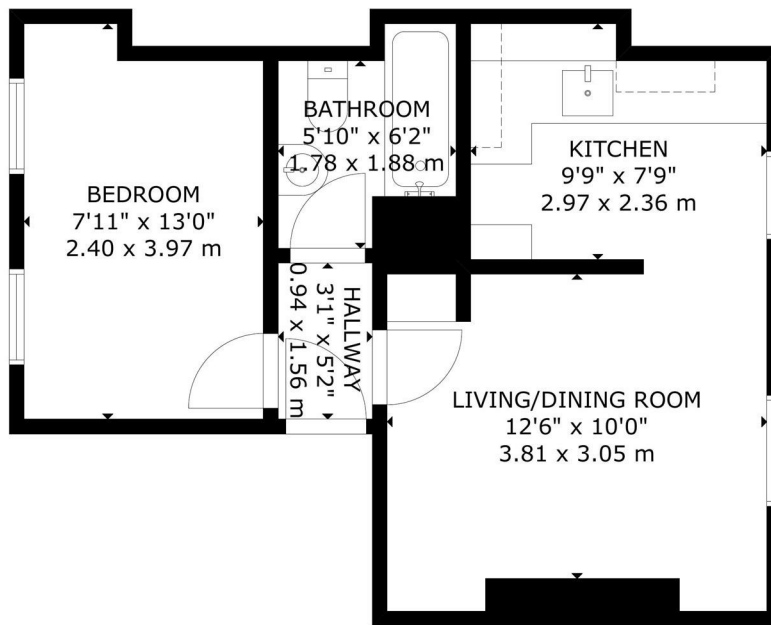


1




1








GROSS INTERNAL AREA
 TOTAL: 35 m²/381 sq ft
 FLOOR 1: 35 m²/381 sq ft
 SIZE AND DIMENSIONS ARE APPROXIMATE, ACTUAL MAY VARY

FLOOR 1

1 | 

1 | 

1 | 

Energy Efficiency Rating		
	Current	Potential
Very energy efficient - lower running costs		
(92 plus) A		
(81-91) B		
(69-80) C	72	78
(55-68) D		
(39-54) E		
(21-38) F		
(1-20) G		
Not energy efficient - higher running costs		
England & Wales		EU Directive 2002/91/EC 

EPC RATING: C COUNCIL TAX BAND: C

Agents Note: Whilst every care has been taken to prepare these particulars, they are for guidance purposes only. All measurements are approximate and are for general guidance purposes only and whilst every care has been taken to ensure their accuracy, they should not be relied upon and potential buyers/tenants are advised to recheck the measurements



**ARMFORD
ESTATES**

OFFICE ADDRESS
 Great Western Studios,
 65 Alfred Road,
 London
 W2 5EU

OFFICE DETAILS
 0203 597 6887
 info@armfordestates.com
<https://www.armfordestates.com/>