

Property ref: 144574

St Andrews House, Reading, RG30

£2,000 PCM

HASLAM'S
Lettings



Situated within a period building to the West of Reading stands this lower ground floor three bedroom, three bathroom apartment. This property further benefits from a private split level garden with two seating areas.

Reading Borough Council tax band C.

Broadband/Mobile Info: Connections available. For an indication of specific speeds and supply of Broadband and Mobile, we advise applicants go to the Ofcom website Broadband and Mobile Coverage Checker.

Available 17/07/2026

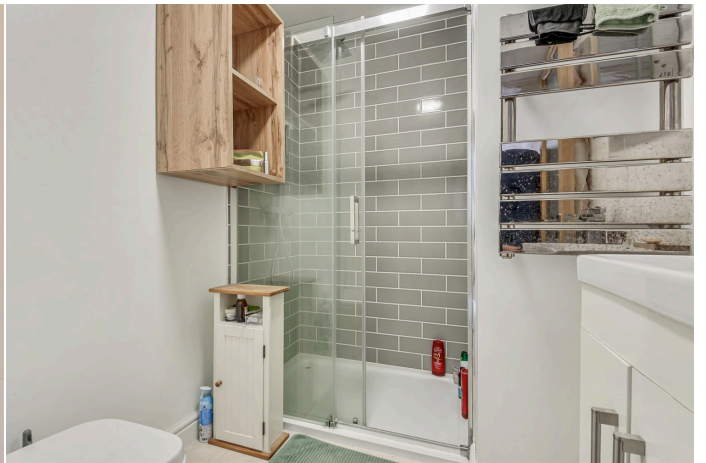
*Fees For Assured Shorthold Tenancies: when you rent a property from us you will be required to pay a sum equivalent to one weeks' rent for a holding deposit. Upon successful application, this amount will be off set against your first months' rent. You will also be required to pay a security deposit equivalent to 5 weeks' rent which will be held and protected in line with Deposit legislation. For more information about our fees please visit: www.haslams.net
Fees for all other tenancies (Non Housing Act Tenancies / Company Lets): when you rent a property from us we will charge you a one-off fee per property. This charge is the equivalent of 15 days of the monthly rental charge (+VAT) with a minimum fee of £450 (inc.VAT) up to a maximum of £650 (inc.VAT). Other fees may apply depending on your circumstances.

- Three double bedrooms; Two with en-suites
- Fully fitted kitchen with appliances
- Family bathroom with shower over the bath
- Electric heating; EPC rating D
- Allocated parking for two cars
- Furnished; Managed by HASLAM'S

0118 960 1055

lettings@haslams.net www.haslams.net

Haslams Estate Agents Ltd, 159 Friar Street, Reading, Berkshire, RG1 1HE

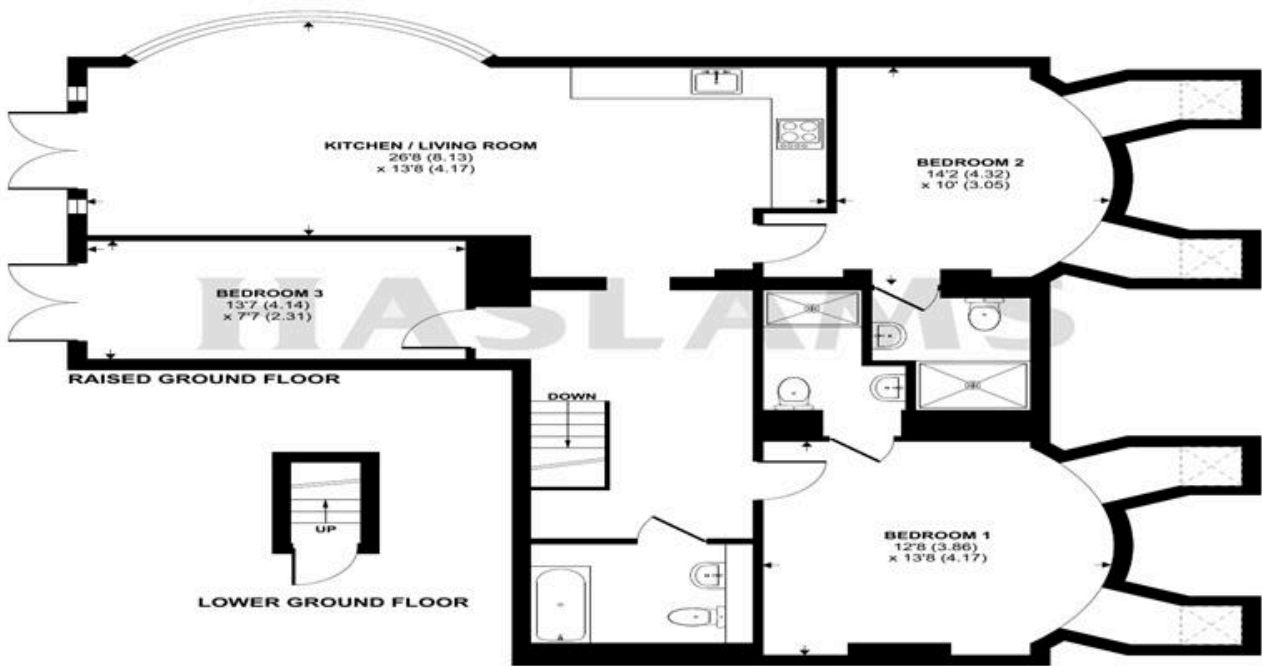




St. Andrews House, 28A Wilton Road, Reading

Approximate Area = 1092 sq ft / 101 sq m

For identification only - Not to scale



Floor plan produced in accordance with RICS Property Measurement Standards incorporating International Property Measurement Standards (IPMS2 Residential). © nbshecom 2022. Produced for Haslam's. REF: 880076