

6 Burton Place, Manchester, Lancashire, M15 4PT
Tel: 0161 637 8336
Email: contactus@ascendproperties.com
www.ascendproperties.com

Ascend

Built on higher standards



Victoria Residence, Manchester

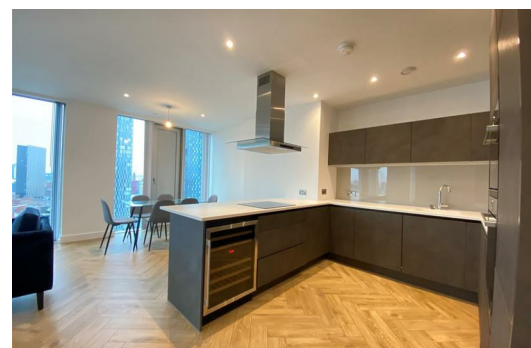
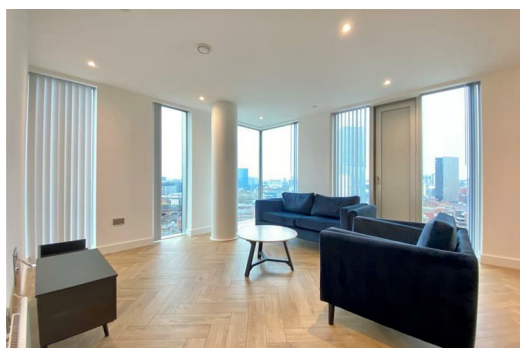
£3,200 PCM

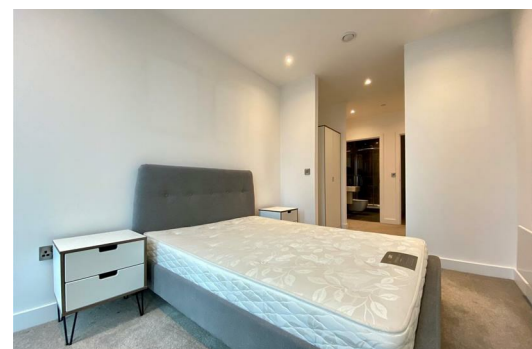
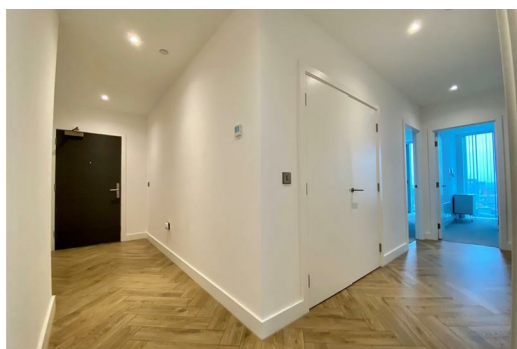
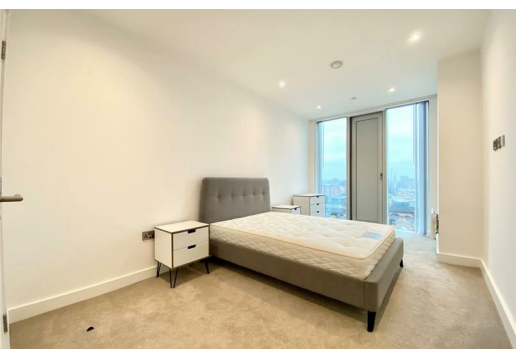
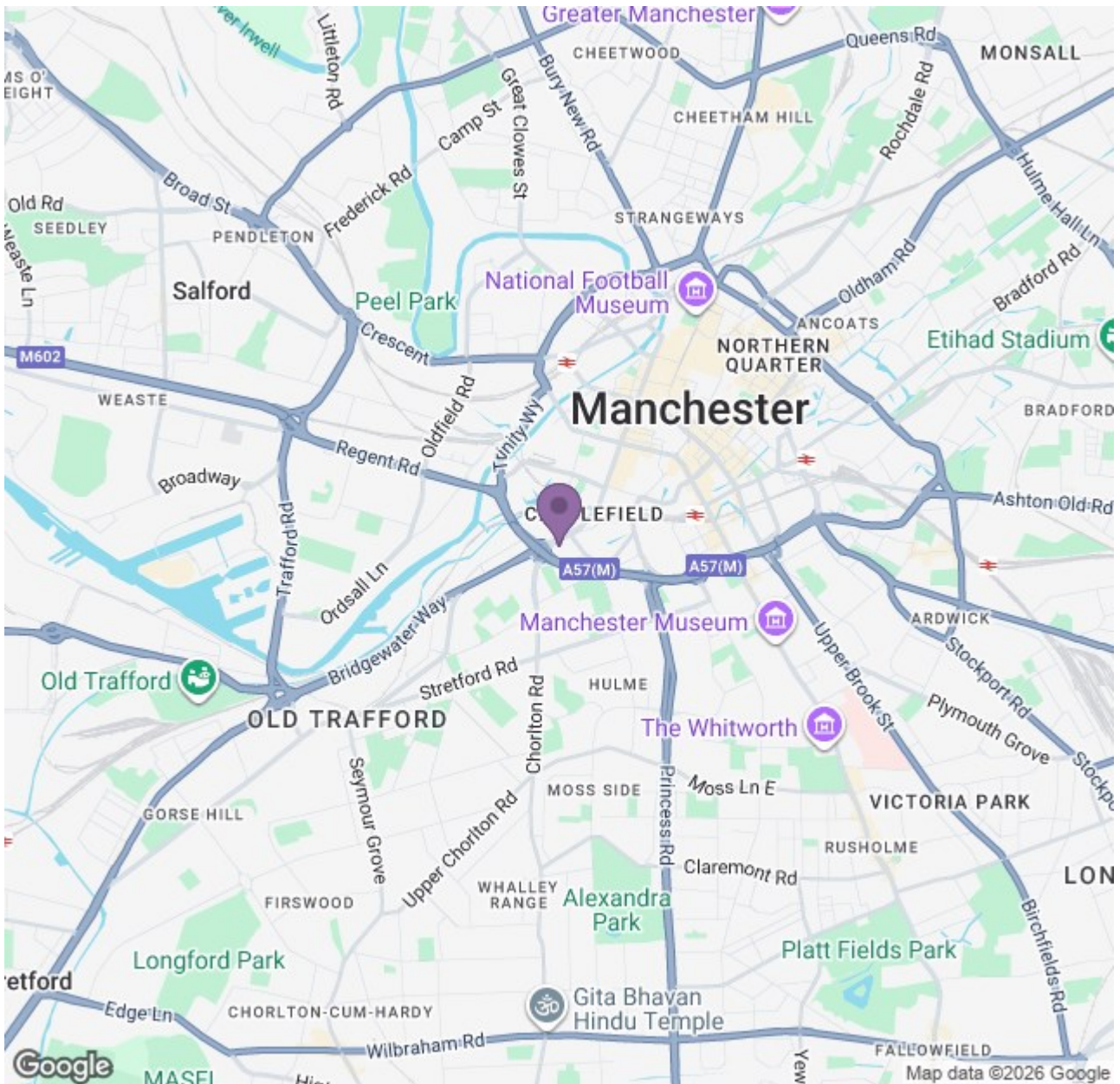
Set within one of Manchester's most luxurious neighbourhoods, this exceptional 16th-floor corner apartment raises the bar for modern living. With panoramic views stretching across Manchester's skyline, high-spec interiors, and world-class amenities at your fingertips, this is city living at its most refined!

Flooded with natural light from its dual-aspect position, the three-bedroom layout is beautifully balanced, generous, stylish, and designed for effortless living. All bedrooms feature bespoke Sharps built-in wardrobes, offering elegant storage solutions that elevate both design and functionality. Each of the three bathrooms is equipped with a shower bidet for added comfort and convenience, including two en-suites finished in premium materials and a third contemporary bathroom completing the home.

The open-plan kitchen and living area is the showstopper: elegant finishes, quality integrated appliances (including double oven, dishwasher, wine cooler and more), and floor-to-ceiling views that make every moment feel special. Whether it's hosting, relaxing, or unwinding after a long day, this room delivers it all.

And then there's the lifestyle. Residents enjoy access to some of the finest amenities in the city, including the iconic 44th-floor gym and spa with a stunning swimming pool, sky-high roof terraces, co-working areas, residents' lounges, and a 24-hour concierge service. Victoria Residence is more than a building; it's a community built around comfort, convenience, and luxury.





Energy Efficiency Rating		Environmental Impact (CO ₂) Rating	
Rating	Score	Rating	Score
A	84-85	A	1-2
B	79-83	B	3-4
C	74-78	C	5-6
D	69-73	D	7-8
E	64-68	E	9-10
F	59-63	F	11-12
G	54-58	G	13-14