



## Marshalsea Road, SE1

### £375,000

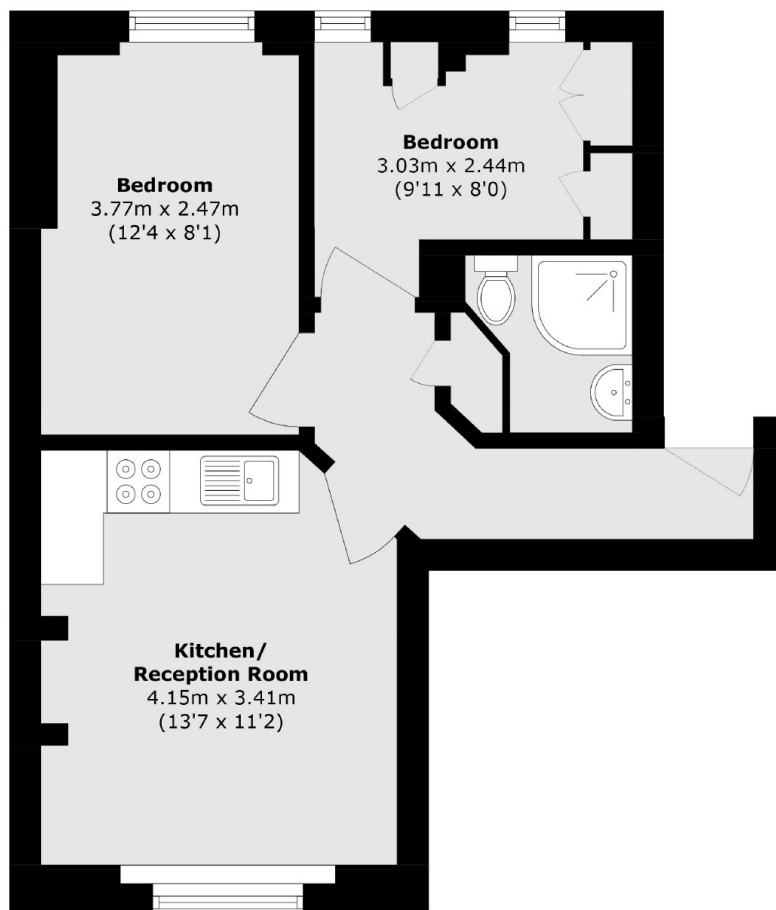
An immaculately presented and recently refurbished, Victorian Mansion flat, with two bedrooms, an open plan living room and fully fitted modern kitchen, a high spec three piece bathroom, tiled from floor to ceiling, plus ample storage and access to a large communal terrace. Sold chain free.

The Douglas Buildings are incredibly well-located, virtually adjacent to Borough station and Borough High Street and very close by to London Bridge, the South Bank and Borough Market, offering excellent transport links and surrounded by many shops, restaurants and other attractions.

### Features

- Victorian Mansion Flat
- Two Bedrooms
- Separate Kitchen & Living Room
- Ample Storage
- Residents' Permit Parking
- Communal Roof Terrace
- Chain Free Sale

# Marshalsea Road, London, SE1



Total area (approx.): 39.2 sq. m (421.9 sq. ft)

## Dexters

London Bridge  
54 Borough High Street  
London  
SE1 1XL  
Sales  
020 7650 5 100

Energy Rating: C. We aim to make our particulars both accurate and reliable. However they are not guaranteed; nor do they form part of an offer or contract. If you require clarification on any points then please contact us, especially if you're traveling some distance to view. Please note that appliances and heating systems have not been tested and therefore no warranties can be given as to their good working order.

 **RICS** | Regulated  
Estate Agent  
and Letting Agent

[dexters.co.uk](https://www.dexters.co.uk)