



Milson Road, W14

£845,000

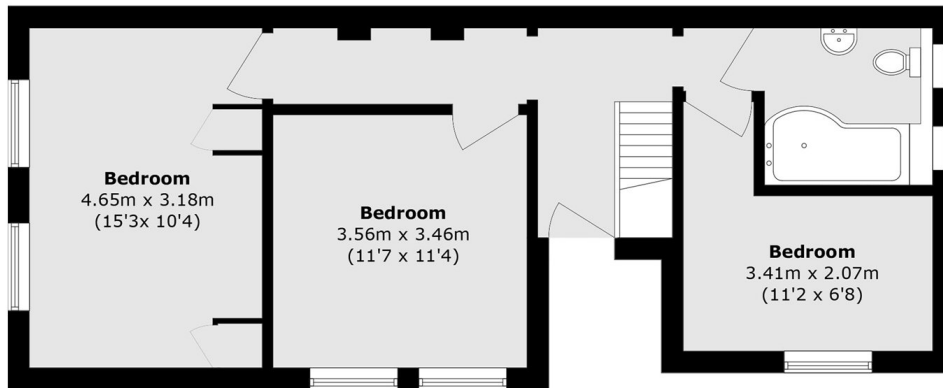
A spacious three double bedroom split-level apartment offering over 1,000 sq ft, with impressive high ceilings and excellent natural light upstairs. The property also features a large reception room and separate kitchen, with stairs leading directly to a private south facing garden. Further benefits include a share of freehold.

Ideally located moments from Kensington Olympia and Olympia London, with excellent transport links via Kensington (Olympia) station (London Overground and District Line). The green open spaces of Holland Park are within easy reach, along with the amenities of Brook Green and Hammersmith.

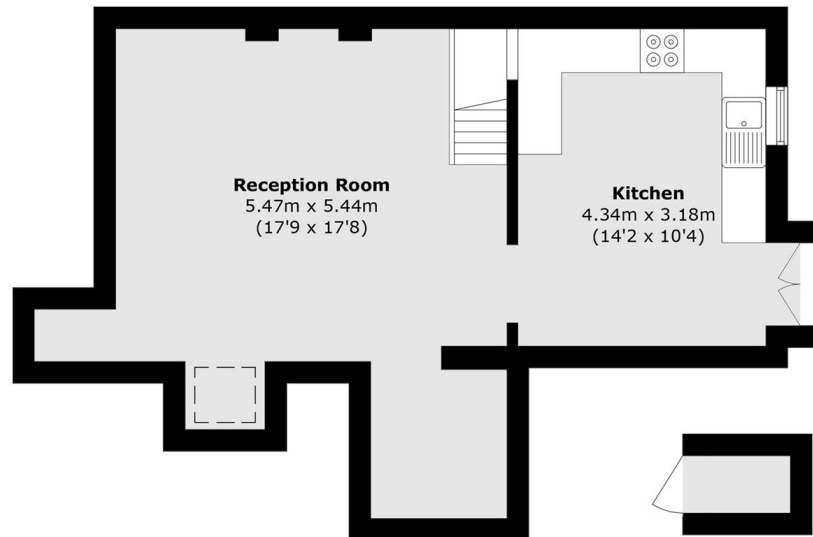
Features

- Share Of Freehold
- Three Double Bedrooms
- Private South Facing Garden
- High Ceilings
- Updated Bathroom
- Ample Storage
- No Onward Chain

Milson Road, London, W14



Ground Floor



Basement

Storage

Total area (approx.): 98.8 sq. m (1063.5 sq. ft)
Externa Storage area (approx.): 0.9 sq. m (9.7 sq. ft)