



High Street, Old Harlow, CM17 0DN

Geoffrey Matthew Estates Ltd are pleased to offer this two bedroom Maisonette in Old Harlow. Close to shops, restaurants and Harlow Mill Train station which offers commuter links to Liverpool Street station, Stansted Airport and Cambridge. The M11 Junction 7a is easily accessible.

This split level property offers fitted kitchen, two bedrooms, spacious lounge and separate dining room. Family bathroom.

Available Early August.

A Holding Deposit payable equivalent to one weeks rent is required to apply for this property; this short-term payment is used to reserve the property while referencing and "right to rent" checks are carried out.

Viewings are scheduled for Friday 26th June 2026 commencing at 4.30pm - call the Agent to register your interest.

£1,300 Per Calendar Month

High Street, Old Harlow, CM17 0DN



- Two Bedroom Maisonette
- Lounge and Separate Dining Room
- Old Harlow Location
- Fitted Kitchen
- Family Bathroom
- Close to Harlow Mill Train Station
- Gas Central Heating
- Viewing Recommended.

The Accommodation in Detail Comprises: Bedroom One

Hardwood door leading into:

14'0" x 8'10" (4.27 x 2.69)

Single panelled radiator, telephone point, TV point, loft hatch and double glazed window to front aspect.

Entrance Hall

With single panelled radiator, stairs rising to first floor and doors to:

Bathroom

Comprising of wood panelled bath with shower over, tiled walls, low level WC, pedestal wash hand basin, single panelled radiator and loft hatch.

Kitchen

10'9" x 7'7" (3.28 x 2.31)

A range of eye and base level units with roll-top working surfaces over and tiled splash-backs. Stainless steel sink unit, inset oven with hob and extractor hood above. Space for dishwasher, space for washing machine and space for upright fridge freezer. Wall mounted boiler fitted to outside wall and double glazed window to front aspect

Dining Room

9'6" x 8'1" (2.90 x 2.46)

Single panelled radiator, wooden beams around the room. Steps down to lounge.

Lounge

16'7" x 13'5" (5.05 x 4.09)

With telephone point, TV point and single glazed windows to rear aspect.

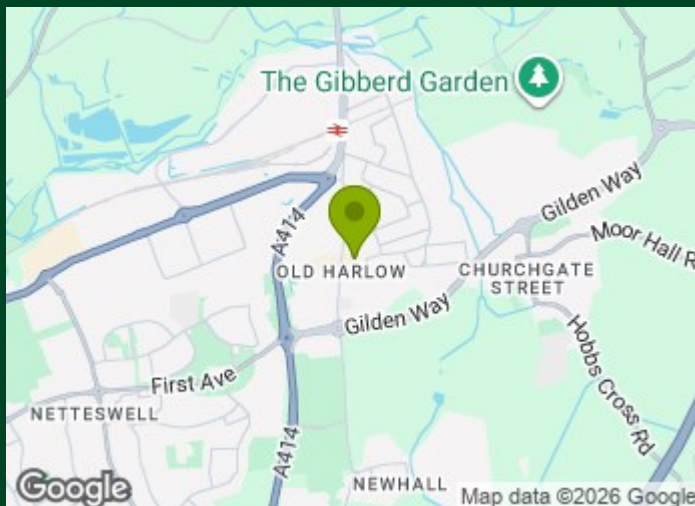
First Floor landing

With door to:

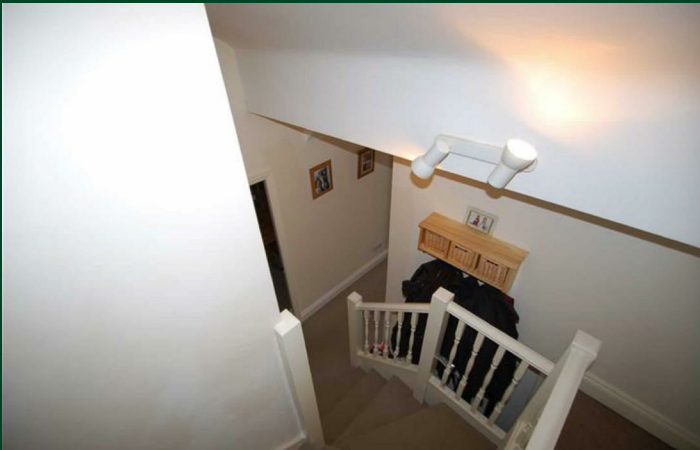
Bedroom Two

14'2" x 11'0" (4.32 x 3.35)

With double panelled radiator, TV point and single glazed window to rear aspect.



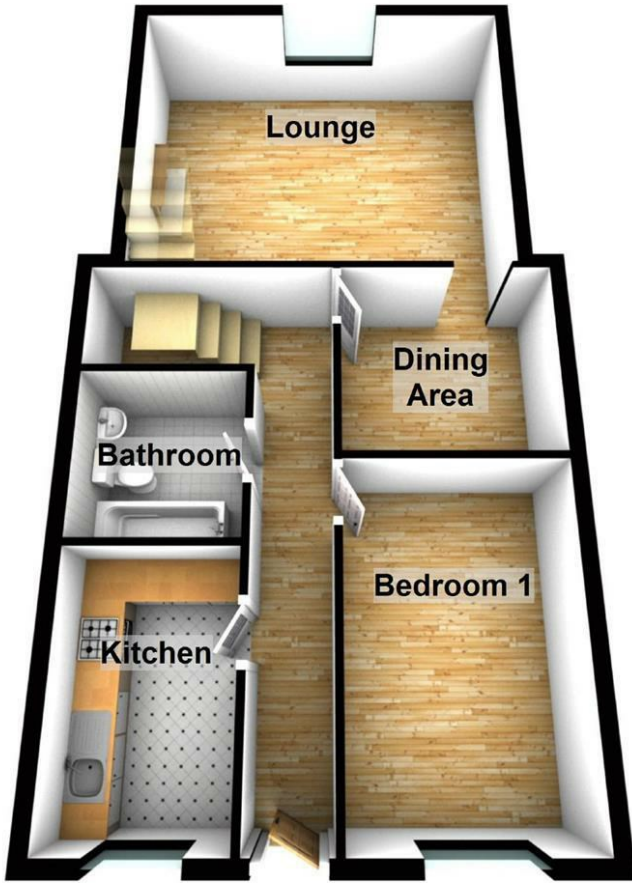
Directions



Floor Plan

Ground Floor

Approx. 61.5 sq. metres (662.4 sq. feet)



First Floor

Approx. 16.3 sq. metres (175.1 sq. feet)



Total area: approx. 77.8 sq. metres (837.4 sq. feet)

Council Tax Details

Harlow Band B

These particulars, whilst believed to be accurate are set out as a general outline only for guidance and do not constitute any part of an offer or contract. Intending purchasers should not rely on them as statements of representation of fact, but must satisfy themselves by inspection or otherwise as to their accuracy. No person in this firm's employment has the authority to make or give any representation or warranty in respect of the property.

Energy Efficiency Rating		Environmental Impact (CO ₂) Rating	
Current	Potential	Current	Potential
Very energy efficient - lower running costs 92 plus A (81-91) B (69-80) C (55-68) D (39-54) E (21-38) F (1-20) G Not energy efficient - higher running costs	73	Very environmentally friendly - lower CO ₂ emissions 92 plus A (81-91) B (69-80) C (55-68) D (39-54) E (21-38) F (1-20) G Not environmentally friendly - higher CO ₂ emissions	72
57		50	
England & Wales	EU Directive 2002/91/EC	England & Wales	EU Directive 2002/91/EC