



Connells

Triumph Road
Hinckley



Property Description

Situated within a popular and modern residential development, Hinckley is a well-presented four-bedroom detached family home offering generous living space, a detached garage and a well-maintained rear garden.

The accommodation begins with a welcoming entrance hallway with staircase rising to the first floor and access to a convenient ground floor W.C. The spacious lounge spans the depth of the property, providing an excellent space for relaxing and entertaining, with French doors opening directly onto the rear garden, allowing plenty of natural light.

To the front of the property is a modern open-plan kitchen/dining room, fitted with a range of contemporary wall and base units, integrated appliances and ample space for a family dining table — ideal for both everyday living and hosting guests.

To the first floor, the main bedroom benefits from built-in storage and a private en-suite shower room. There are three further well-proportioned bedrooms, making this an ideal home for families or those requiring home office space. A modern family bathroom completes the first-floor accommodation.

Externally, the property enjoys a private rear garden, mainly laid to lawn with a patio seating area. To the side is a detached single garage with driveway parking in front.

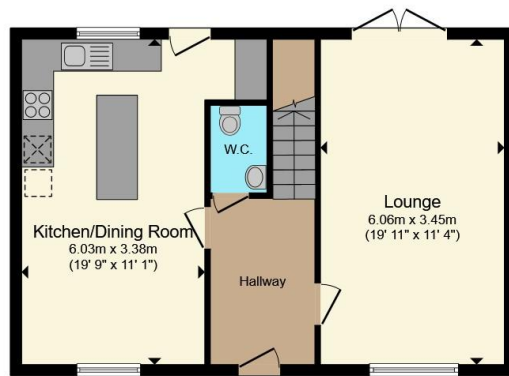
Conveniently located for local amenities, schools, transport links and Hinckley town centre, this property offers comfortable family living in a sought-after location.







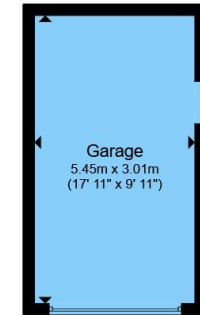




Ground Floor



First Floor



Garage

Total floor area 126.9 m² (1,366 sq.ft.) approx

This floor plan is for illustrative purposes only. It is not drawn to scale. Any measurements, floor areas (including any total floor area), openings and orientation are approximate. No details are guaranteed, they cannot be relied upon for any purpose and they do not form part of any agreement. No liability is taken for any error, omission or misstatement. A party must rely upon its own inspection(s). Powered by www.propertybox.io



To view this property please contact Connells on

T 01455 230523
E hinckley@connells.co.uk

88 Castle Street
HINCKLEY LE10 1DD

EPC Rating: C Council Tax
Band: D

Tenure: Freehold

view this property online [connells.co.uk/Property/HIN313966](https://www.connells.co.uk/Property/HIN313966)



1. MONEY LAUNDERING REGULATIONS Intending purchasers will be asked to produce identification documentation at a later stage and we would ask for your co-operation in order that there will be no delay in agreeing the sale. 2. These particulars do not constitute part or all of an offer or contract. 3. The measurements indicated are supplied for guidance only and as such must be considered incorrect. Potential buyers are advised to recheck measurements before committing to any expense. 4. We have not tested any apparatus, equipment, fixtures, fittings or services and it is in the buyers interest to check the working condition of any appliances.

Connells Residential is registered in England and Wales under company number 1489613, Registered Office is Cumbria House, 16-20 Hockliffe Street, Leighton Buzzard, Bedfordshire, LU7 1GN. VAT Registration Number is 500 2481 05.

See all our properties at www.connells.co.uk | www.rightmove.co.uk | www.zoopla.co.uk

Property Ref: HIN313966 - 0003