



Connells

Bridgeview Close
Hemel Hempstead



Property Description

A beautifully presented four-bedroom townhouse, tucked away within a quiet cul-de-sac on the sought-after Bridgeview Close, enjoying picturesque, scenic views leading directly over the Grand Union Canal.

Arranged over three floors, the property offers bright, well-balanced accommodation throughout, with an abundance of natural light enhanced by dual aspect windows to both the principal and second bedrooms. The ground floor centres around a spacious kitchen diner, a fantastic everyday living and entertaining space, with doors opening directly onto the garden and uninterrupted canal views. There is also a downstairs WC and internal access to the integral garage/gym.

The first floor features a generous living room with a private balcony overlooking the water, a real standout feature and perfect for enjoying the setting, along with a second bedroom and Jack & Jill bathroom. On the top floor, the main bedroom benefits from dual aspect windows and an en-suite shower room, alongside two further bedrooms and a family bathroom.

Externally, the south-west facing rear garden is arranged over two tiers, with patio and lawn areas leading directly onto the canal, creating a peaceful and private setting.

Ideally located, Apsley station is around an 8-minute walk, with Hemel Hempstead station also within walking distance, alongside well-

regarded schools, local amenities, and canal side-walks.

Entrance Hall

Double glazed door to the front aspect, providing internal access to the integral garage, alongside a radiator and neatly concealed under stairs storage.

Kitchen/Diner

A kitchen/dining room with full-width double glazed doors and windows to the rear, providing access to the garden and allowing for an abundance of natural light. Fitted with a range of wall and base units with work surfaces incorporating a one and a half bowl sink with drainer, Electrolux electric oven, Zanussi gas hob with stainless steel splash-back and cooker hood. The kitchen is further enhanced by a selection of integrated appliances, including a Hotpoint fridge/freezer, Bosch dishwasher (installed 2025), and Zanussi washing machine. Combination boiler approximately 8 years old.

Lounge

Double glazed French doors with full-height glazed side panels opening onto a balcony with contemporary glass balustrade to the rear, enjoying scenic views, with television point, radiator, and high-speed Internet connectivity of approximately 530 Mbps.

Cloakroom

Double glazed window to the rear aspect, pedestal wash hand basin with chrome monobloc mixer tap, WC, and radiator.

Garage

Fitted with an electric garage door, with power, lighting, and a television point.

Bedroom 1

Double glazed, full-height dual aspect windows overlooking the Grand Union Canal, fitted wardrobes, vanity area, television point, and radiator.

En-Suite

Shower cubicle, pedestal wash hand basin with chrome monobloc mixer tap, partially tiled walls, shaver point, and heated towel rail.

Bedroom 2

Double glazed, dual aspect full-height windows to the front, television point, radiator, and access to a Jack and Jill en-suite

En-Suite

Jack and Jill en-suite comprising a shower cubicle, pedestal wash hand basin with chrome monobloc mixer tap, partially tiled walls, shaver point, and heated towel rail.

Bedroom 3

Double glazed full-height window to the front aspect, television point and radiator.

Bedroom 4

Double glazed full-height window to the front aspect, television point and radiator.

Family Bathroom

Panelled bath with mixer tap and handheld shower attachment, pedestal wash hand basin with chrome monobloc mixer tap, heated towel rail, shaver point, and partially tiled walls.

Outside

Front

Block paved driveway providing off-road parking and access to the garage, with the added benefit of an electric vehicle charging point.

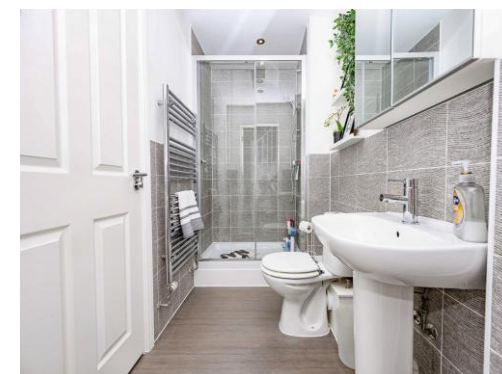
Rear

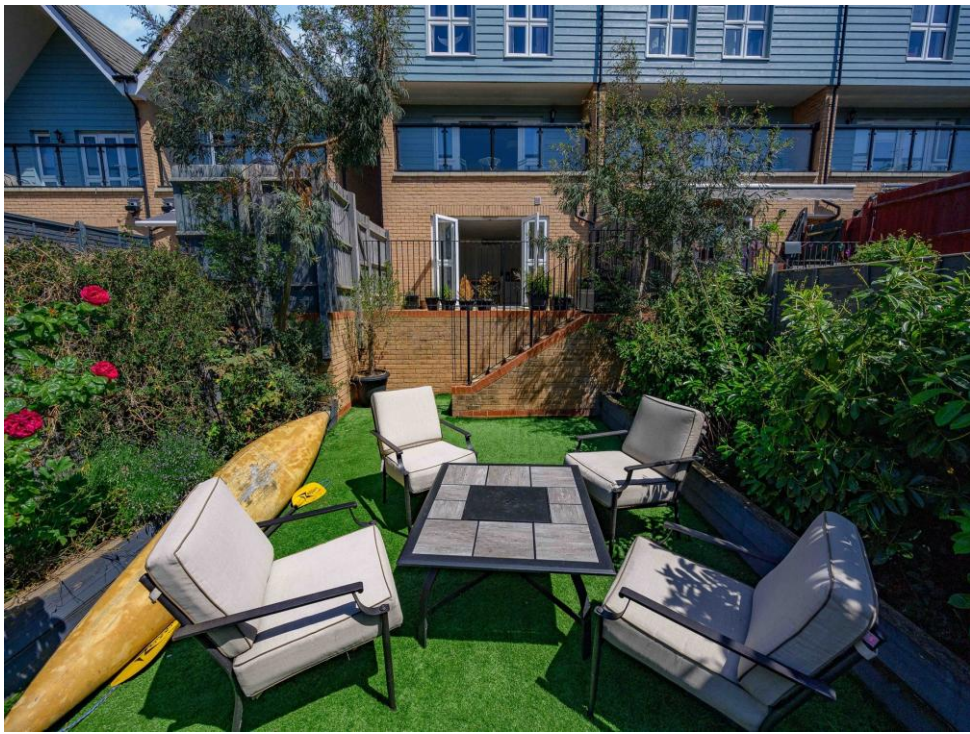
A south-west facing, tiered rear garden backing directly onto the Grand Union Canal, enjoying a tranquil setting. Laid with artificial lawn and well-stocked flower beds, with patio areas, gated side access, and an outdoor tap

Agents Note:

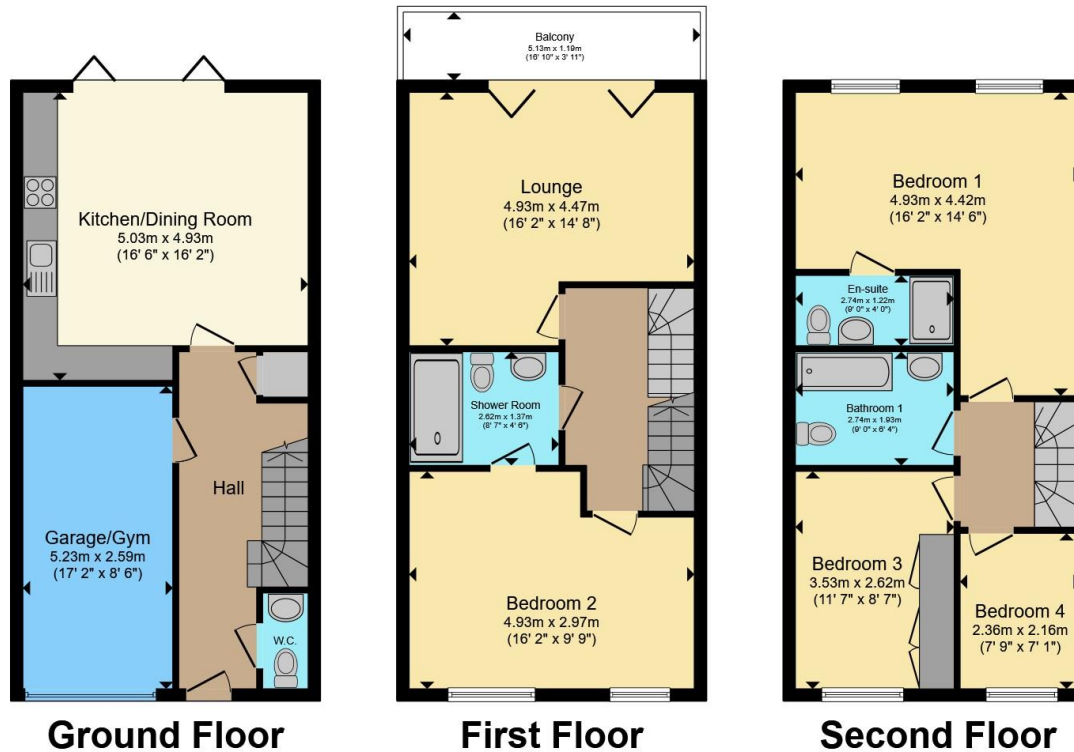
Under the terms of the Estate Agency Act 1979 we are obliged to disclose that the vendor of this property is a family member of an employee/ an employee of Connells Estate Agents.

Vendor has advised that there is a payment of £310 per annum estate charge.









Total floor area 152.4 m² (1,641 sq.ft.) approx
 This floor plan is for illustrative purposes only. It is not drawn to scale. Any measurements, floor areas (including any total floor area), openings and orientation are approximate. No details are guaranteed, they cannot be relied upon for any purpose and they do not form part of any agreement. No liability is taken for any error, omission or misstatement. A party must rely upon its own inspection(s). Powered by www.propertybox.io



To view this property please contact Connells on

T 01442 216 633
E hemelhempstead@connells.co.uk

45 Marlowes
 HEMEL HEMPSTEAD HP1 1LD

EPC Rating: B Council Tax Band: E

Tenure: Freehold

view this property online connells.co.uk/Property/HEM312733



1. MONEY LAUNDERING REGULATIONS Intending purchasers will be asked to produce identification documentation at a later stage and we would ask for your co-operation in order that there will be no delay in agreeing the sale. 2. These particulars do not constitute part or all of an offer or contract. 3. The measurements indicated are supplied for guidance only and as such must be considered incorrect. Potential buyers are advised to recheck measurements before committing to any expense. 4. We have not tested any apparatus, equipment, fixtures, fittings or services and it is in the buyers interest to check the working condition of any appliances.

Connells Residential is registered in England and Wales under company number 1489613, Registered Office is Cumbria House, 16-20 Hockliffe Street, Leighton Buzzard, Bedfordshire, LU7 1GN. VAT Registration Number is 500 2481 05.

See all our properties at www.connells.co.uk | www.rightmove.co.uk | www.zoopla.co.uk

Property Ref: HEM312733 - 0005