



Flat C, 27 Crescent Road, Nether Edge, Sheffield, S7 1HJ



# 27 Crescent Road

## Nether Edge

Guide Price

# £150,000

GUIDE PRICE: £150,000-£160,000

Situated on the first floor of a beautiful converted period residence in the heart of the highly sought-after Nether Edge district, this fabulous one-bedroom apartment offers stylish, light-filled accommodation that has been recently renovated throughout to an excellent standard.

The property boasts a spacious living room flooded with natural light, while the impressive high ceilings enhance the sense of space and character throughout. The well-appointed kitchen provides a practical and contemporary space for everyday living, while the generous double bedroom offers comfortable accommodation. A modern bathroom completes the layout, finished with a clean and elegant design.

Combining period charm with modern convenience, this attractive apartment is ideal for first-time buyers, professionals, or those seeking a turnkey investment opportunity.

Further benefits include access to a lovely communal garden, offering a peaceful setting for residents to relax and enjoy outdoor living, together with the added advantage of off-road parking.

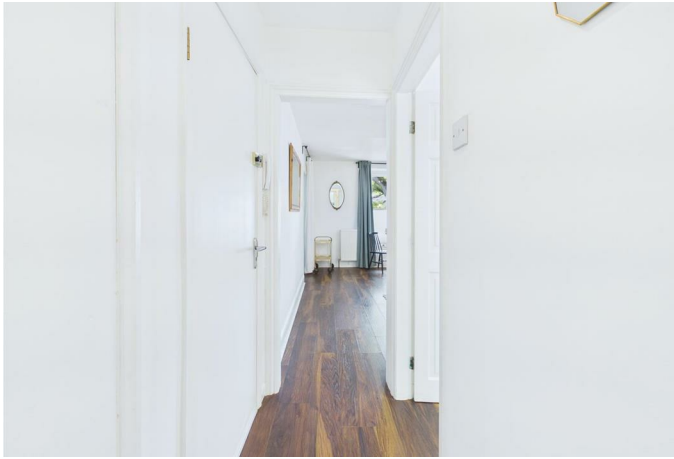
Perfectly positioned in the vibrant and highly desirable community of Nether Edge, the property is just a short stroll from an excellent selection of independent cafés, restaurants, bars and boutique shops. The area is renowned for its strong community spirit, regular local events and attractive green spaces, while excellent transport links provide easy access to Sheffield city centre and beyond.

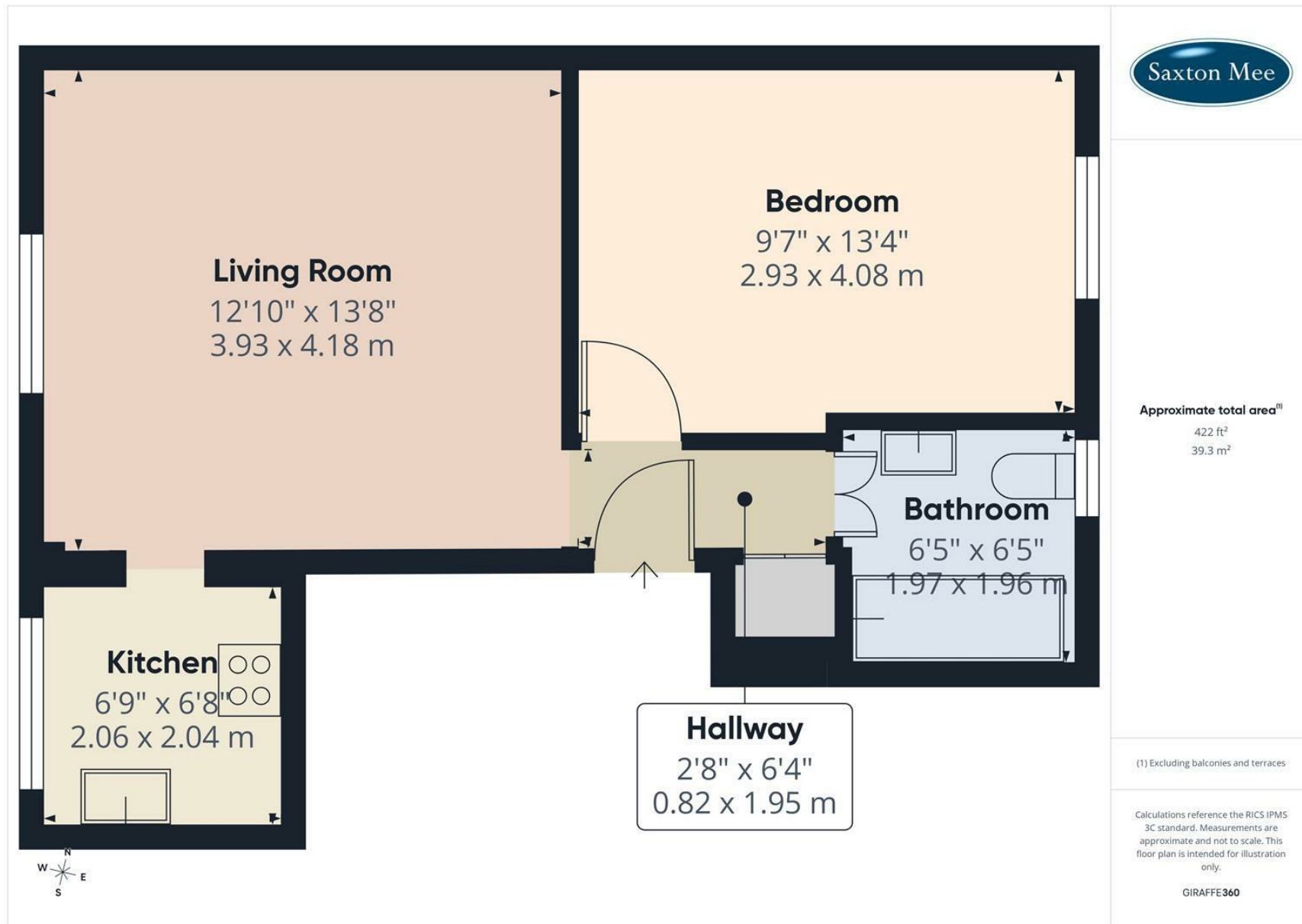
Early viewing is highly recommended to appreciate the quality, character and superb location of this exceptional apartment.



- Beautiful and spacious first floor apartment in the sought after and leafy green area of Nether Edge
- This stunning converted stone -built period property is a real treasure and the apartment enjoys aspects onto the trees Nether Edge is famous for
- The property boasts gas central heating, attractive downlighting and has recently been renovated throughout
- Attractive living room offering a wonderful sense of space and character
- Beautiful period features like the large sash windows, stained glass window on the communal entrance and high ceilings an
- Complete with a fitted kitchen with wooden work surfaces and plenty of storage in the cabinets
- A contemporary white suite bathroom with shower over the bath and attractive tiling to the walls
- Lovely outside seating area and off street parking







While we endeavour to make our sales particulars fair, accurate and reliable, they are only a general guide to the property and, accordingly, if there is any point, which is of particular importance to you, please contact the relevant office. The Agents have not tested any apparatus, equipment, fittings or services and so cannot verify they are in working order. The buyer is advised to obtain verification. Please note all the measurement details are approximate and should not be relied upon as exact. All plans, floor plans and maps are for guidance purposes only and are not to scale. Under no circumstances should they be relied upon as exact or for use in planning carpets and other such fixtures, fittings or furnishings. YOUR HOME IS AT RISK IF YOU DO NOT KEEP UP REPAYMENTS ON A MORTGAGE OR OTHER LOAN SECURED ON IT. 'A Life Assurance policy may be requested.' 'Written Quotations of credit terms available on request.'

Banner Cross  
T: 0114 268 3241  
E: [bannercross@saxtonmee.co.uk](mailto:bannercross@saxtonmee.co.uk)  
[www.saxtonmee.co.uk](http://www.saxtonmee.co.uk)

Hathersage  
T: 01433 650009  
E: [hathersage@saxtonmee.co.uk](mailto:hathersage@saxtonmee.co.uk)

Bakewell  
T: 01629 815307  
E: [bakewell@saxtonmee.co.uk](mailto:bakewell@saxtonmee.co.uk)

Matlock  
T: 01629 828250  
E: [matlock@saxtonmee.co.uk](mailto:matlock@saxtonmee.co.uk)

