



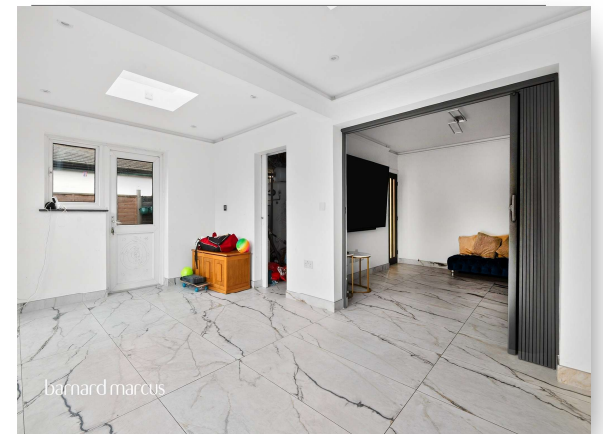
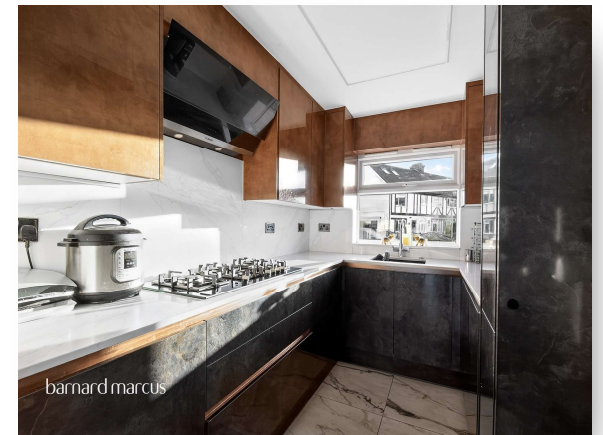
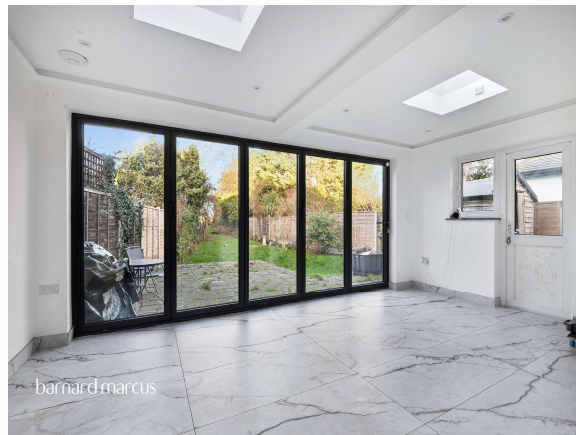
Elm Way, Epsom KT19 0HB

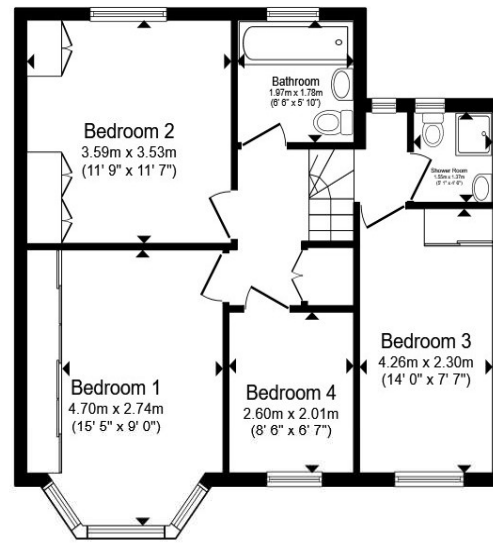
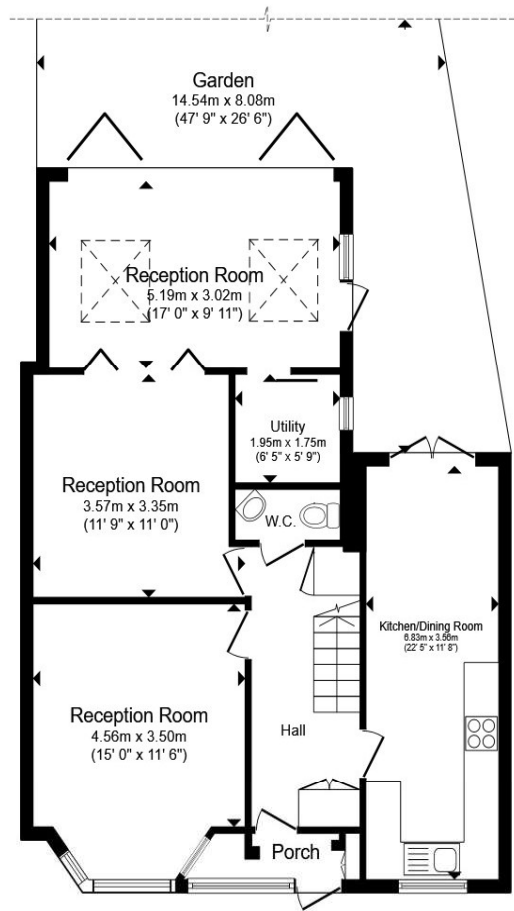


welcome to

Elm Way, Epsom

Situated on a desirable residential road in Ewell, this beautifully presented family home offers spacious and versatile accommodation arranged over two floors, ideally suited to modern family living.





The ground floor is centred around a selection of generous reception areas, providing excellent flexibility for everyday living, entertaining and working from home. These well-proportioned rooms are bright and welcoming, offering clearly defined living spaces with a comfortable flow throughout the home.

The kitchen is arranged as a single, well-sized kitchen and dining room and is positioned separately from the main reception areas, creating a dedicated space for cooking and dining. A separate utility room provides additional practicality, storage and laundry facilities, helping to keep the main living areas uncluttered.

The first floor provides a well-arranged bedroom layout, offering a number of comfortable and well-proportioned rooms suitable for family living. The accommodation is complemented by modern bathroom facilities, creating a practical and well-balanced upper floor ideal for family occupation.

Externally, the property benefits from a private rear garden, ideal for relaxing and entertaining. The house is beautifully presented throughout, allowing a purchaser to move straight in.

Conveniently located close to local amenities, well-regarded schools and excellent transport links, including nearby stations with services into London, this property represents an excellent opportunity in a desirable Ewell setting.

Total floor area 132.8 m² (1,429 sq.ft.) approx

This floor plan is for illustrative purposes only. It is not drawn to scale. Any measurements, floor areas (including any total floor area), openings and orientation are approximate. No details are guaranteed, they cannot be relied upon for any purpose and they do not form part of any agreement. No liability is taken for any error, omission or misstatement. A party must rely upon its own inspection(s). Powered by www.propertybox.io

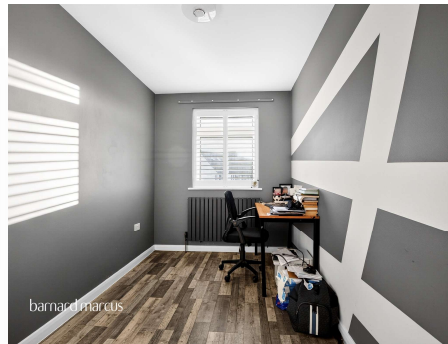
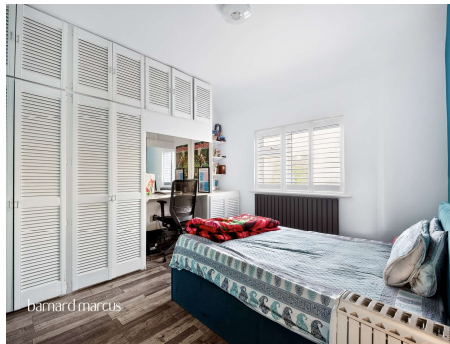
welcome to

Elm Way, Epsom

- Beautifully presented family home
- Desirable residential road in Ewell
- Multiple spacious reception rooms
- Combined kitchen and dining room
- Separate utility room

Tenure: Freehold EPC Rating: B
Council Tax Band: E

£775,000



Please note the marker reflects the postcode not the actual property

check out more properties at [barnardmarcus.co.uk](https://www.barnardmarcus.co.uk)



Property Ref:
EWE106513 - 0003

1. MONEY LAUNDERING REGULATIONS Intending purchasers will be asked to produce identification documentation at a later stage and we would ask for your co-operation in order that there is no delay in agreeing the sale. 2. These particulars do not constitute part or all of an offer or contract. 3. The measurements indicated are supplied for guidance only and as such must be considered incorrect. Potential buyers are advised to recheck measurements before committing to any expense. 4. We have not tested any apparatus, equipment, fixtures or services and it is in the buyers interest to check the working condition of any appliances. 5. Where an EPC, or a Home Report (Scotland only) is held for this property, it is available for inspection at the branch by appointment. If you require a printed version of a Home Report, you will need to pay a reasonable production charge reflecting printing and other costs. 6. We are not able to offer an opinion either written or verbal on the content of these reports and this must be obtained from your legal representative. 7. Whilst we take care in preparing these reports, a buyer should ensure that his/her legal representative confirms as soon as possible all matters relating to title including the extent and boundaries of the property and other important matters before exchange of contracts.

Barnard Marcus is a trading name of Sequence (UK) Limited which is registered in England and Wales under company number 4268443, Registered Office is Cumbria House, 16-20 Hockliffe Street, Leighton Buzzard, Bedfordshire, LU7 1GN. VAT Registration Number is 500 2481 05.



barnard marcus



020 8393 0977



Ewell@barnardmarcus.co.uk



429 Kingston Road, Epsom, Surrey, KT19 0DB



[barnardmarcus.co.uk](https://www.barnardmarcus.co.uk)