



Chelsea Creek, Fulham, London, SW6

£860,000

- 12th floor
- Dual aspect apartment
- Large private balcony
- 1 bedroom
- 1 bathroom
- Spacious dining area
- 567 sq ft
- Halcyon Club Access With Gym, Pool, Spa, Sauna & Steam Room
- Access To Sky Lounge & Terrace
- 24-hour concierge
- Great transport links

This dual aspect 12th floor apartment consists of a spacious bedroom with fitted wardrobes, an open-plan kitchen/living area equipped with modern Siemens and Miele appliances, a wine cooler, and modern conveniences such as a video intercom entry system, comfort cooling and heating, and ample storage. The large private balcony provides specular views from the high floor.

Kings Tower is the final phase at the exquisite Chelsea Creek development. Residents of Kings Tower will have exclusive access to the Halcyon Club, a remarkable facility featuring a fitness centre, swimming pool, spa with sauna and steam room, a private cinema, and a meeting room. With the added bonus of a 31st-floor sky lounge and terrace, offering breath-taking views of the city.

At Chelsea Creek sophistication meets urban living in this one-bedroom, twelfth-floor residence. Nestled within a tranquil waterside setting just moments from the renowned King's Road and the picturesque River Thames, this exceptional property will shortly be completed offering an exceptional living experience.



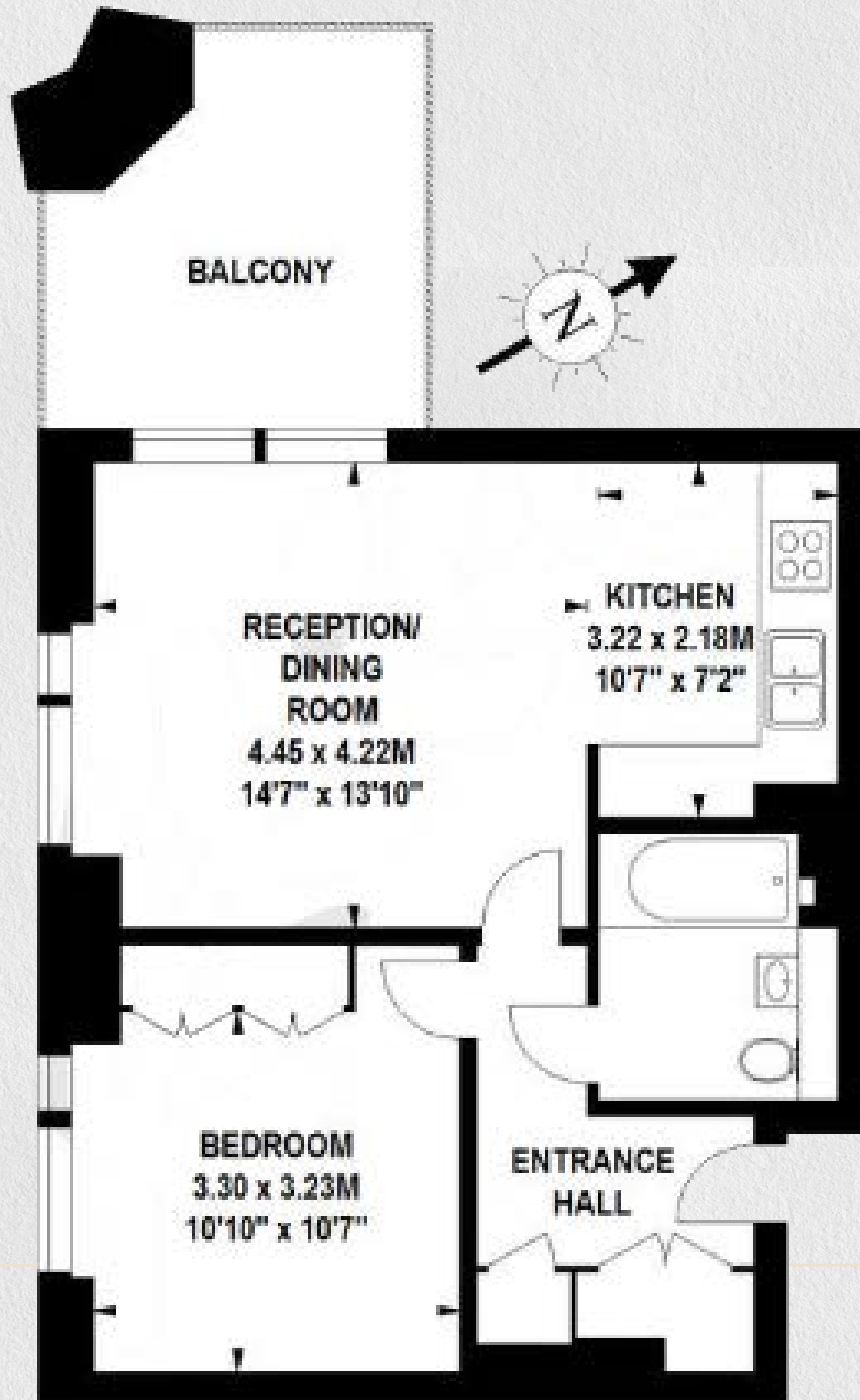


ONE LONDON

0207 856 0396
info@one-london.uk
www.one-london.uk

Chelsea Creek,
Bridgewater Avenue,
SW6

One bedroom / One bathroom
567 sq ft



Twelfth Floor