



Garden Flat



# Garden Flat

Flat 1, Bellair House, Charmouth,, DT6 6RD

Stunning apartment in a coastal location in a converted Georgian house with wonderful grounds and parking.

- Grade II Listed
- Georgian building
- Stunning gardens and views
- Parking for 2 cars
- 2 Bathrooms
- High spec fitted kitchen
- Outskirts of Charmouth
- 1 mile from the sea!
- Leasehold
- Rateable value £1750

Offers Over £299,500

## THE PROPERTY

This beautiful Grade II listed building was restored to its former glory four years ago and is currently successfully operated as a high end holiday let for discerning guests. There are three characterful apartments and a separate cottage within the landscaped grounds of Bellair.

Decorated with heritage paint hues complimenting the light, elegant and spacious layout. High ceilings, original fireplaces, shutters and windows, deep skirting boards, and doors reflect the high attention to detail. Along with cast iron radiators and traditional classical designed bathrooms creates a beautiful living space, which is equally suitable as a main home or high quality holiday accommodation.



The private front door is accessed on the side of the building, via a sheltered courtyard with locally sourced blue lias flagstones. The generous hallway with pale Purbeck flagstone flooring and an integrated smoke alarm leads to the kitchen to the right.

Traditional Shaker floor and tall wall cupboards with brass fixtures reflect the original character and Georgian proportions. The tall shuttered original sash windows above the double Belfast sink overlooks the courtyard. AEG five ring gas hob, double oven plus wide pan, cutlery and utensil drawers, along with wooden work tops make a practical and versatile space. AEG fully integrated dishwasher and washing machine included.

The elegant white quartz topped central island concealing separate integrated fridge and freezer units leads to a light and spacious lounge/diner. Large sash window with original shutters overlook the extensive communal grounds. Neutral fitted carpet with large fireplace and electric fire effect wood burner.

Spacious well proportioned master bedroom with deep skirting boards, fitted carpet and original windows. Traditional, tiled ensuite bathroom with Burlington classic sink unit, fixtures and cast iron bath, glass shower screen bath and mains shower.

Second double bedroom plus separate guest shower and W.C with traditional Burlington fixtures, tiling and electric towel rail complete this versatile home.

## OUTSIDE

The building is approached by a curved gravel drive with ample parking for visitors, overlooking beautiful panoramic views of the Marshwood vale and hills. The garden has established trees, expansive lawns and pedestrian pathways.

## SITUATION

Charmouth is a highly sought after village lying on the beautiful Jurassic Coast and only some three miles to the east of Lyme Regis. The village offers excellent local amenities, a popular primary school and a Blue Flag beach with access to the stunning coastline and coastal footpaths. The property is about a mile outside of Charmouth.

## SERVICES

Gas fired central heating

Klaugester Biodisc sewage treatment plant (installed in 2004 and serviced June 2024).

ADSL 20 MBPS internet.

## VIEWINGS

Via the selling agent stags. The property is a holiday let, so we may need to work around changeover days.

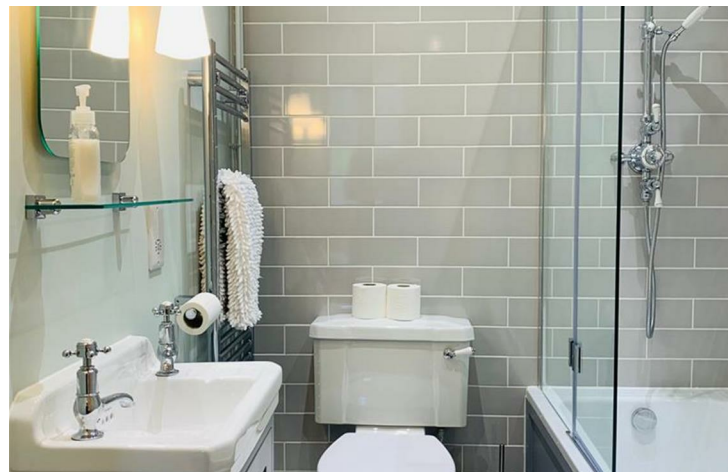
## LEASE DETAILS and INFO

999 years from 2018

Service charge £1982

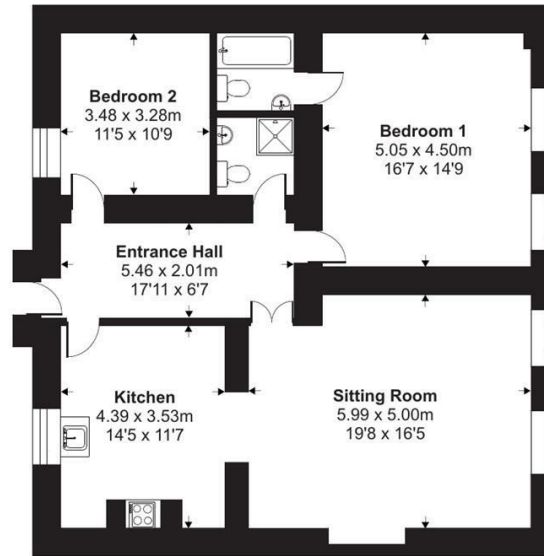
Ground rent £1

The property was built in 1830 with stone walls and slate roof.



Approximate Area = 1183 sq ft / 109.9 sq m

For identification only - Not to scale



Ground Floor



Floor plan produced in accordance with RICS Property Measurement 2nd Edition, incorporating International Property Measurement Standards (IPMS2 Residential). © nichcom 2025. Produced for Stags. REF: 1251090

IMPORTANT: Stags gives notice that: 1. These particulars are a general guide to the description of the property and are not to be relied upon for any purpose. 2. These particulars do not constitute part of an offer or contract. 3. We have not carried out a structural survey and the services, appliances and fittings have not been tested or assessed. Purchasers must satisfy themselves. 4. All photographs, measurements, floorplans and distances referred to are given as a guide only. 5. It should not be assumed that the property has all necessary planning, building regulation or other consents. 6. Whilst we have tried to describe the property as accurately as possible, if there is anything you have particular concerns over or sensitivities to, or would like further information about, please ask prior to arranging a viewing.



Energy Efficiency Rating		Current	Potential
Very energy efficient - lower running costs			
(92 plus) <b>A</b>			
(81-91) <b>B</b>			
(69-80) <b>C</b>			
(54-68) <b>D</b>			
(39-54) <b>E</b>			
(21-38) <b>F</b>			
(1-20) <b>G</b>			
Not energy efficient - higher running costs			
<b>England &amp; Wales</b>		EU Directive 2002/91/EC	

32 South Street, Bridport, Dorset, DT6 3NQ

bridport@stags.co.uk

01308 428000



@StagsProperty

Cornwall | Devon | Somerset | Dorset | London