



## Gloucester Place, W1U

£4,225 Per calendar month

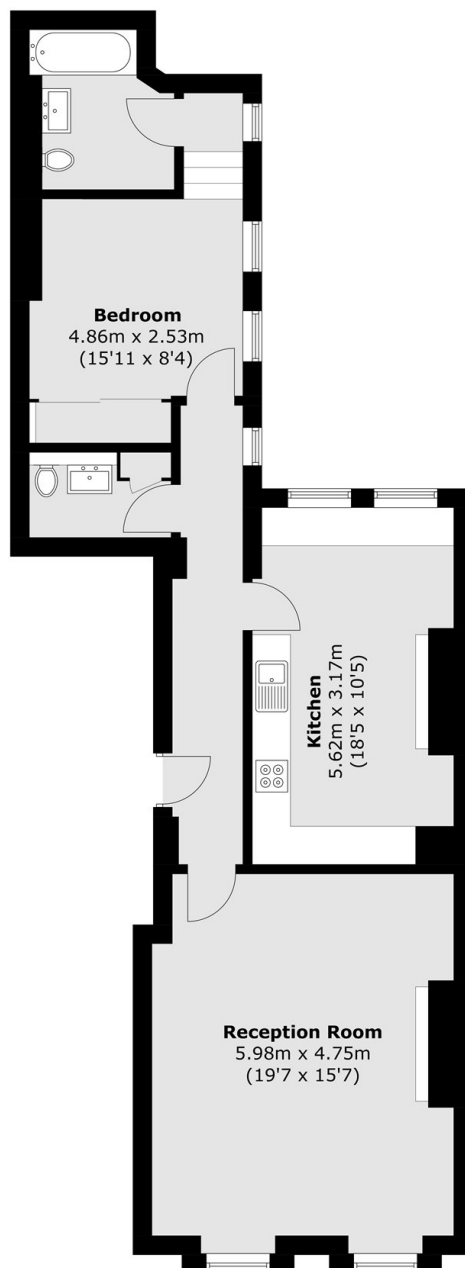
This well-presented apartment is on the ground floor of a Georgian conversion on Gloucester Place. The flat has a double bedroom, bathroom, guest WC, good sized reception room and a large separate kitchen.

Gloucester Place is a short walk from the vibrant shops, bars, cafes and restaurants of both Marylebone and Portman Villages. The open spaces of Regent's Park and Hyde Park are within easy reach and there are transport links from Marble Arch, Baker Street, Edgware Road and Bond Street stations.

### Features

- One Bedroom
- One Bathroom
- Guest WC
- Large Reception
- Separate Kitchen
- The Portman Estate

# Gloucester Place, London, W1U



Total area (approx.): 77.8 sq. m (837.4 sq. ft)