



**POOLE  
TOWNSEND**

# Victoria Road, Barrow-In-Furness, LA14 5NW

£179,950

3 1 1



This forecourt fronted Victorian style home offers beautifully presented accommodation that has been modernised and finished with many sympathetic touches. The main living area is open plan, featuring a bay fronted lounge and dining room. There is an attractively presented kitchen and separate laundry/store to the rear of the property and a split-level landing that provides separate access to all three bedrooms and to a rather lovely bathroom. There is an enclosed walled yard to the rear.

### Location

What3Words///shady.camp.excuse

### Description

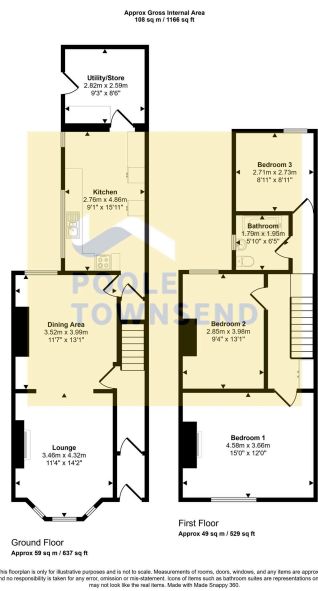
Situated in a popular residential area which is convenient for local amenities including schools, convenience store and bus services.

The property is beautifully presented and will attract interest from many buyers. There is stepped access into a vestibule area where there is beautiful, part glazed interior door with coloured/leaded glass panes. The main hallway has a staircase immediately ahead of you with a door alongside opening opening into the dining area which is a light and airy space with open access to the adjacent lounge. This equally good size room has a bay window to the front elevation and an attractive fireplace with decorative surround including a display mantle, cast-iron style inset and polished hearth with a gas coal effect fire.

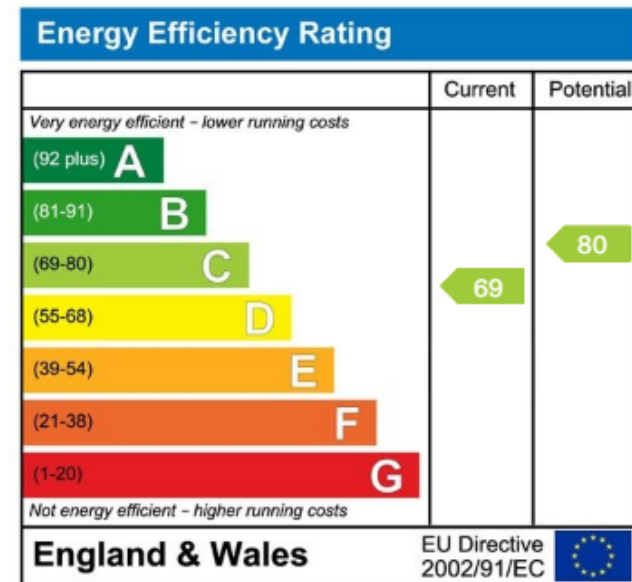
Beyond the living space is an attractively presented kitchen that offers plenty of fitted cupboards and drawers with a low-profile timber work surface above that incorporates a sink unit. There is space to accommodate a freestanding cooker where there is a wall mounted cooker hood above, plumbing for a dishwasher and space for an upright fridge freezer. There is a door at the end of the room which leads into the laundry/store room where there is plumbing for a washing machine and space for a clothes dryer. The gas boiler is also located here alongside the rear access door that leads you into the enclosed yard.

The split-level landing has a fitted cupboard and access to each of the respective bedrooms and bathroom.





- Victorian Style Terraced Property
- Forecourt Front Property
- Modernised Beautiful Home
- Open Plan Living And Dining
- Kitchen With Separate Rear Laundry/Store Room
- Three Bedroom
- Three Piece Suite Bathroom
- Popular Location
- Council Tax Band B
- FREEHOLD



Visit us at  
[www.pooletownsend.co.uk](http://www.pooletownsend.co.uk)  
[enquiries@pooletownsend.co.uk](mailto:enquiries@pooletownsend.co.uk)

We are open  
 Monday – Friday 9.00 – 5.00  
 Saturday 9.00 – 1.00

Barrow 01229 811811  
 Ulverston 01229 588111  
 Grange 015395 33316  
 Kendal 01539 734455  
 Milnthorpe 015395 62044