



Shaftesbury Mews, SW4
£1,200,000

Dexters



Shaftesbury Mews, SW4

A rare and unique, end of terrace freehold home situated within a desirable, private gated mews with off street parking, providing an abundance of naturally bright and airy living and entertaining spaces across three floors with a tranquil garden.

The accommodation has been thoughtfully arranged to include a spacious reception room with a vaulted ceiling, which opens seamlessly via bi-fold doors onto a south-east-facing, low-maintenance walled garden. The kitchen is positioned towards the front of the property and includes a wide range of appliances, along with ample wall and base units. A cloakroom completes the ground floor.

Across the upper floors, there are three bedrooms and two bathrooms, including a principal bedroom that spans the entire first floor and has en suite facilities.

Shaftesbury Mews represents a small community of highly desirable homes situated just off Clapham Common South Side. Providing easy access to the many shops, restaurants and bars of the Abbeville Village & Clapham Old Town along with Clapham South & Common stations (Northern Line).

Features

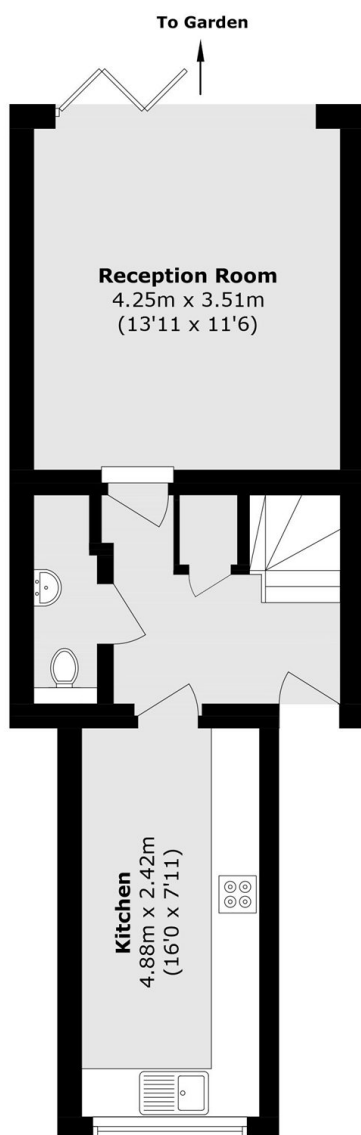
- Private Gated Mews
- Freehold
- Three Bedrooms
- Two Bathrooms
- Off Street Parking
- Chain Free



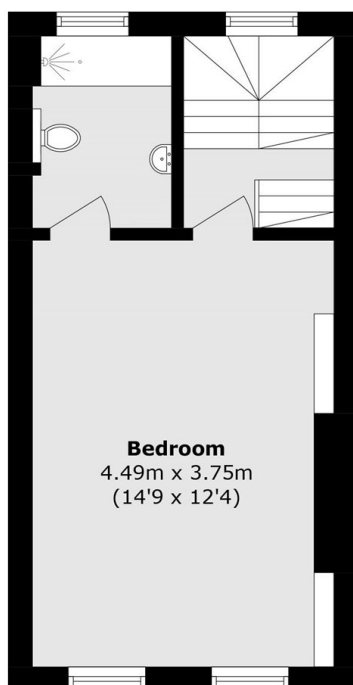




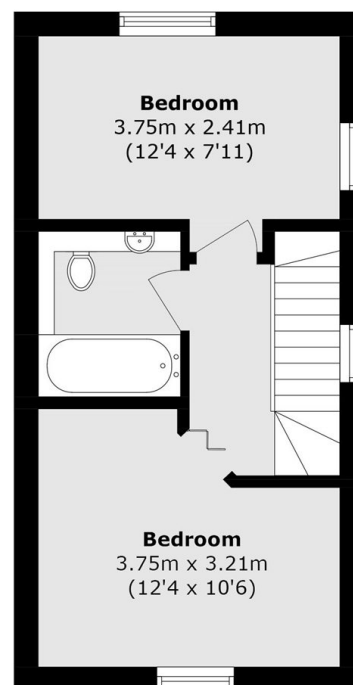
Shaftesbury Mews, London, SW4



Ground Floor



First Floor



Second Floor

Total (approx.): 98.5 sq. m (1060.2 sq. ft)