



VILLAGE ESTATES

• EST.1993 •



93 Main Road, Sidcup, Kent DA14 6ND

Tel: 0208 302 1002

www.village-estates.com

Email: sidcup@village-estates.com



NO ONWARD CHAIN

PRIVATE GARDEN

BATHROOM AND EN-SUITE

GROUNDS FLOOR APARTMENT

2 DOUBLE BEDROOMS

SPACIOUS LIVING AREA

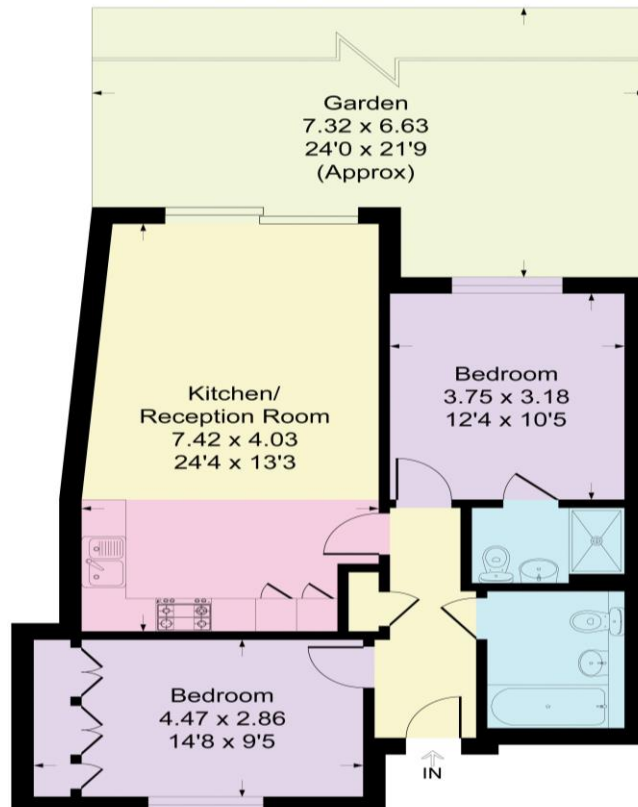


**Flat 2, The Elms
Chislehurst Road**

Sidcup, DA14 6BG

**Guide Price £425,000-
£450,000**

STUNNING TWO BEDROOM APARTMENT WITH ITS OWN PRIVATE GARDEN. NO ONWARD CHAIN! New to the market and sure to impress, this immaculately presented two-bedroom apartment is ideally located just a short walk from Sidcup High Street and its wide range of local amenities. Finished to an excellent standard throughout, the property boasts a spacious open-plan kitchen and living area, offering a bright and versatile space perfect for both relaxing and entertaining. There are two generously sized double bedrooms, with the principal bedroom benefiting from a stylish en-suite shower room. The second bedroom is served by a large, well-appointed main bathroom. Externally, the property features a private garden, providing a peaceful and secluded outdoor retreat, ideal for enjoying warmer months. Additional benefits include allocated parking and well-maintained communal areas presented to a high standard. Offered with no onward chain, this property is an excellent opportunity for first-time buyers and downsizers alike. Early viewing is highly recommended so contact us today to arrange yours.



CONSUMER PROTECTION FROM UNFAIR TRADING REGULATIONS 2008

Please note that any services, heating system or appliances have not been tested, and no warranty can be given or implied as to their working order. You are advised to obtain verification from your solicitor or surveyor. References to the tenure of a property are based on information supplied by the seller. We have not had sight of the title documents and a buyer is advised to obtain verification from their solicitor. Items shown in photographs are not included unless specifically mentioned within the sales particulars, but may be available by separate negotiation. Whilst every attempt has been made to ensure the accuracy of the floor plan contained here, measurements of doors, windows, rooms and any other items are approximate and no responsibility is taken for any error, omission, or mis-statement. We advise you to book an appointment to view before embarking on any journey to see a property, and check its availability. The accuracy of these details are not guaranteed and they do not form part of the contract.